

## APPLICATION NOTE

### Updating BITE3 Firmware with Power DB LITE

**Overview:** This procedure will guide you through updating the firmware in the BITE3 using the Power DB LITE software. It is recommended that you first download the latest firmware from the Megger web site.

#### Procedure

1. Open Power DB and select the BITE3 instrument.
2. The following screen will open when the BITE3 instrument is selected.

The screenshot shows the 'Instrument Configuration' dialog box. It contains the following fields and controls:

- Instrument Use: Battery Tester
- Manufacturer: AVD / Megger
- Model/Type/Series: BITE3
- Supported Models: BITE3
- Model: BITE3 (dropdown menu)
- Serial Port: 4 (dropdown menu) with a Refresh button
- Baud Rate: 115200 (dropdown menu) with a Device Manager button
- Byte Size: 8 (dropdown menu)
- Parity: None (dropdown menu)
- Stop Bits: 1 (dropdown menu)
- Buttons at the bottom: Settings..., Firmware..., Configure..., OK, and Cancel.

Note that USB serial ports can be identified by viewing the serial port list, plugging in the USB port and then hitting the Refresh button. The USB port will be the only new item in the list.

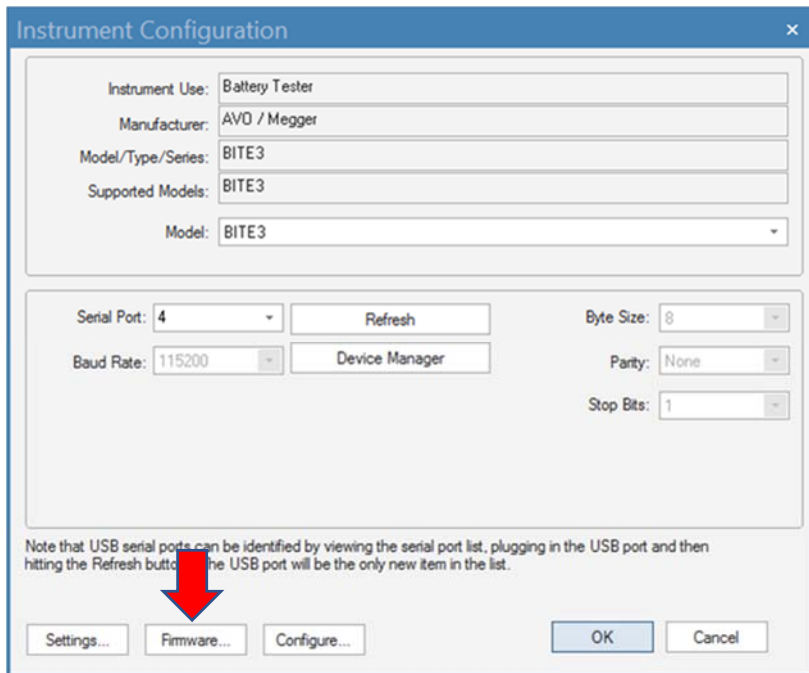
3. Verify the com port setting is correct. Click on Device Manager and view COM Ports if you are not sure.
4. Verify the BITE3 is powered up and on its main screen.

(NEXT PAGE)

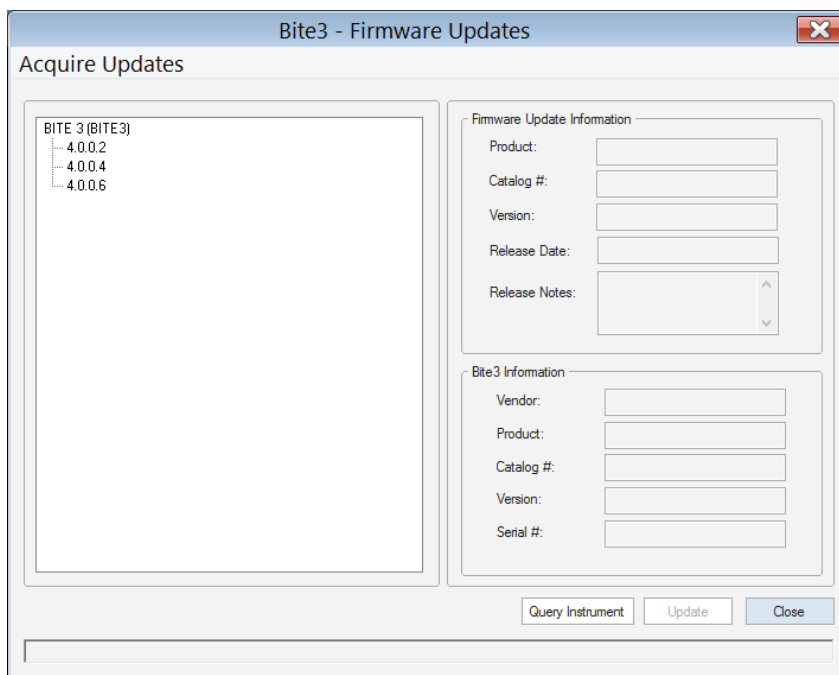
## APPLICATION NOTE

### Updating BITE3 Firmware with Power DB LITE

5. Click on the “Firmware” button in the Power DB software.



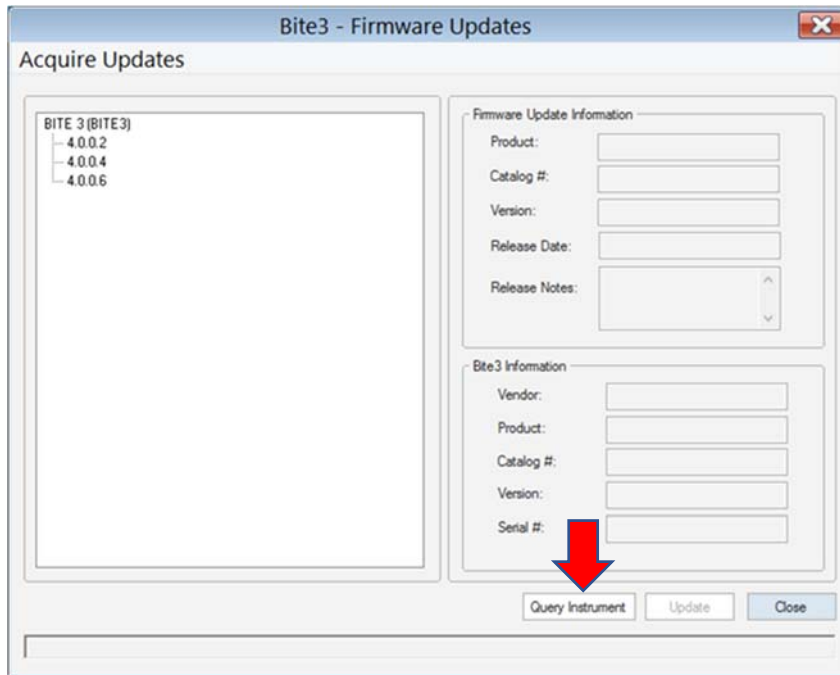
The following screen will display.



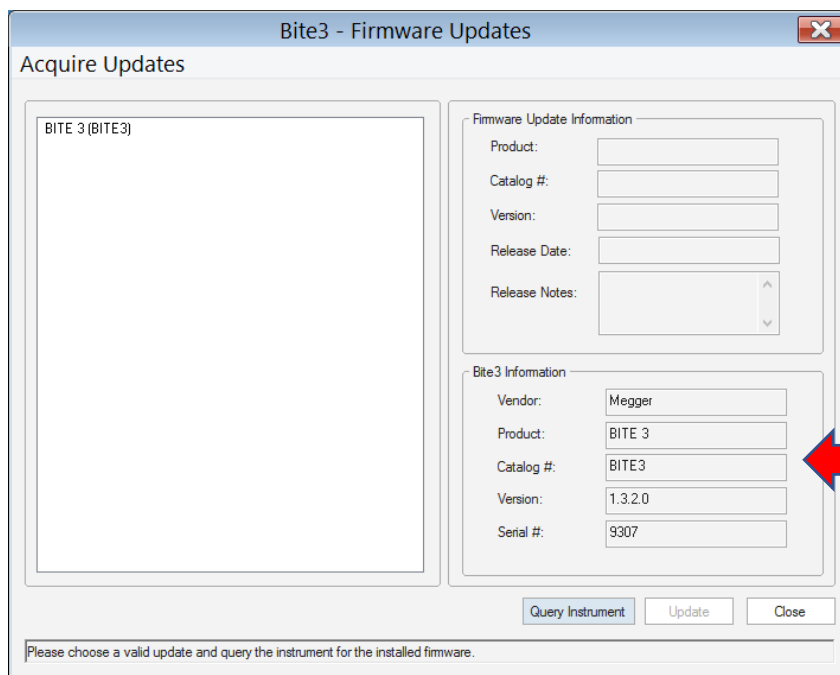
## APPLICATION NOTE

### Updating BITE3 Firmware with Power DB LITE

6. Click on the “Query Instrument” button.



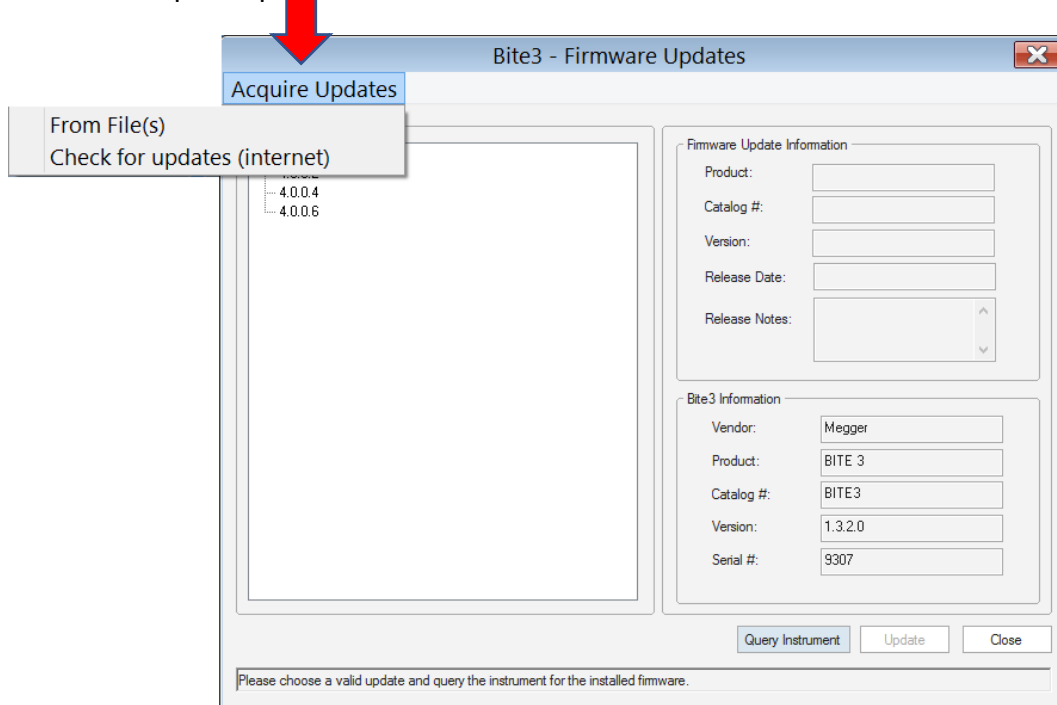
7. The software will poll the BITE3 and display the present firmware in the “BITE3 Information” fields.



## APPLICATION NOTE

### Updating BITE3 Firmware with Power DB LITE

8. Click on “Acquire Updates”

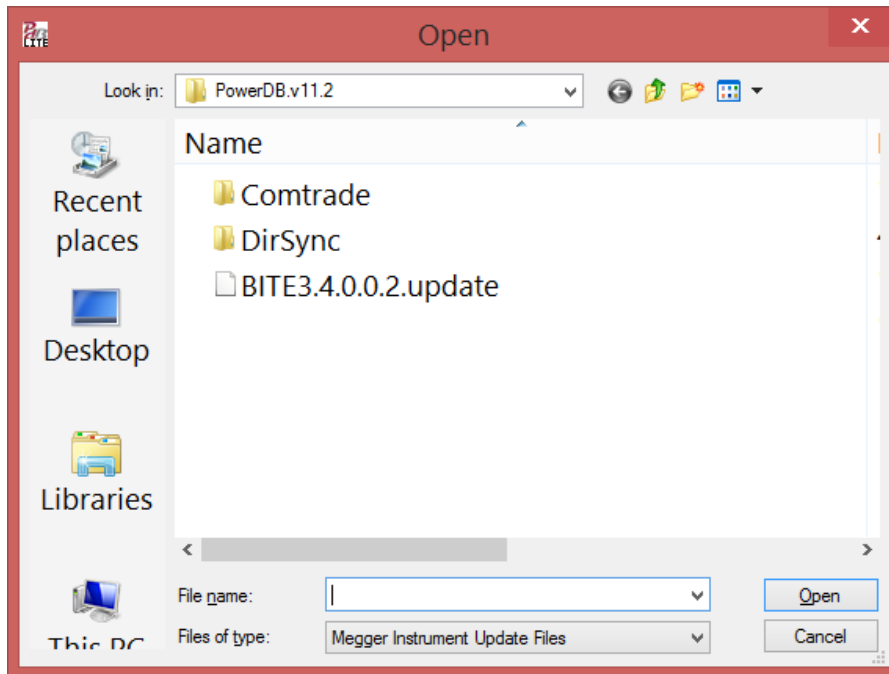


9. You can click on Check for Updates on (Internet). This may or may not work depending on security settings. It is recommended that you download the latest firmware file from the Megger web site.
10. If you have already downloaded the file from the internet and then click on “From (File)” and the following screen will open.

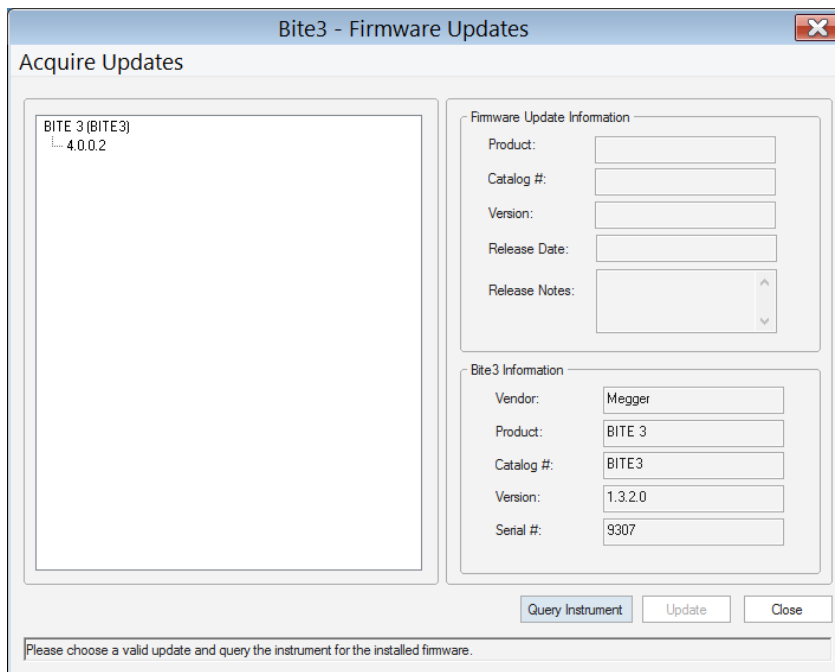
(NEXT PAGE)

## APPLICATION NOTE

### Updating BITE3 Firmware with Power DB LITE



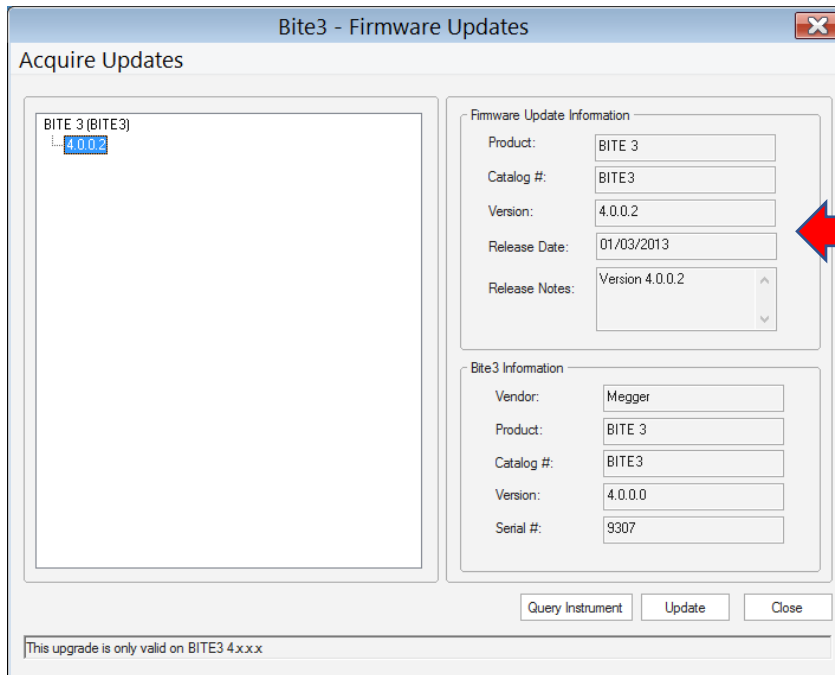
11. Navigate to update file and select the downloaded latest firmware update file, then click on "Open". The update file should now appear in the firmware screen



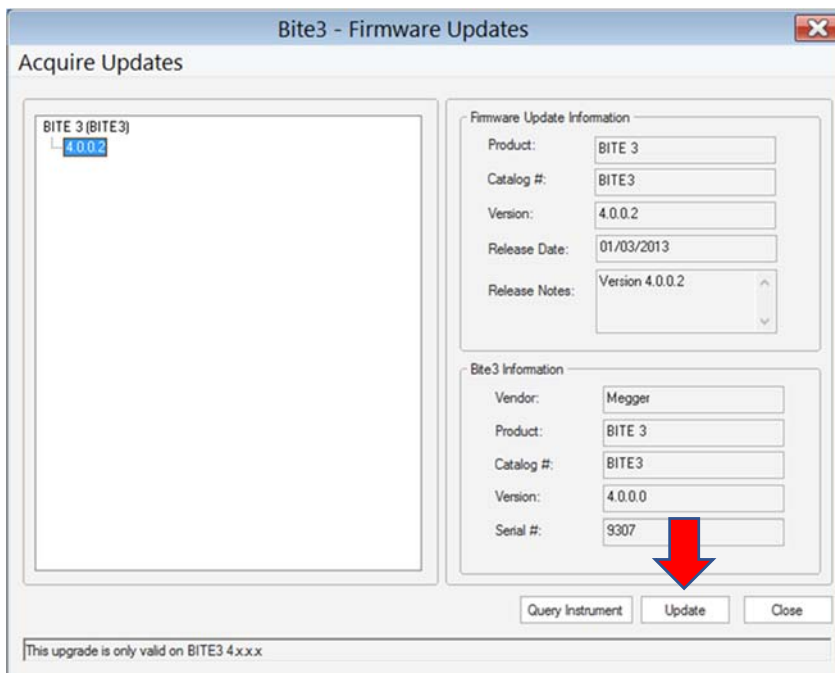
## APPLICATION NOTE

### Updating BITE3 Firmware with Power DB LITE

12. Select (Click on) the new firmware version and the data on it will appear in the “Firmware Update Information” section.



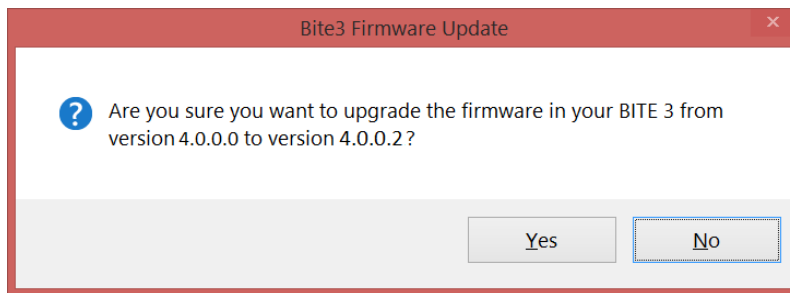
13. Now click on the update button to start the update.



## APPLICATION NOTE

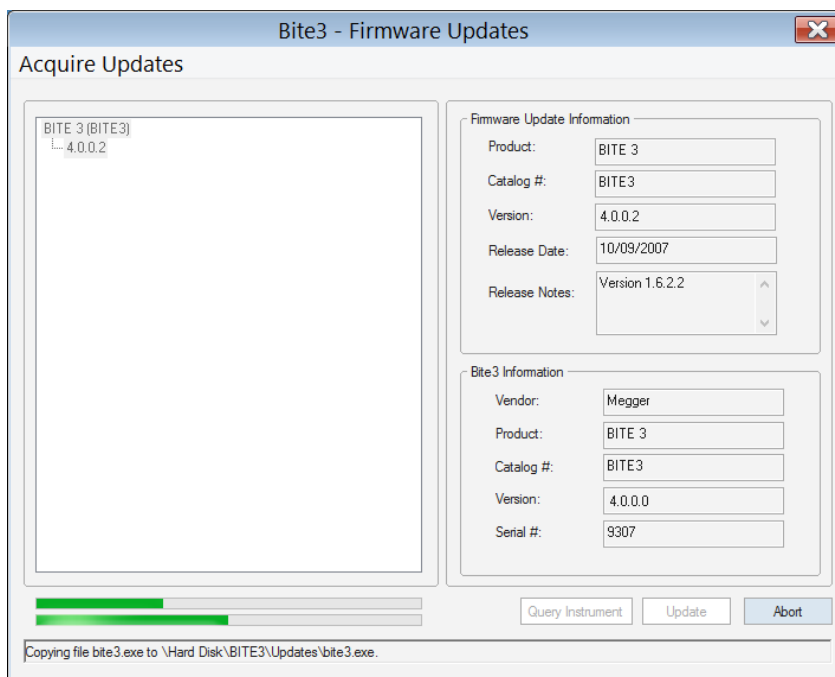
### Updating BITE3 Firmware with Power DB LITE

14. An “Are you sure?” message will appear.



15. Click on the “Yes” button.

16. The update will then start.

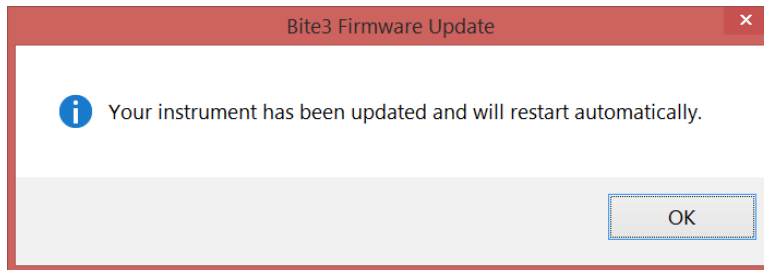


(NEXT PAGE)

## APPLICATION NOTE

### Updating BITE3 Firmware with Power DB LITE

17. When the update is complete the following message will appear.



18. Click on the “OK” button.

The BITE3 will reboot with the new firmware.

**COMPLETE**