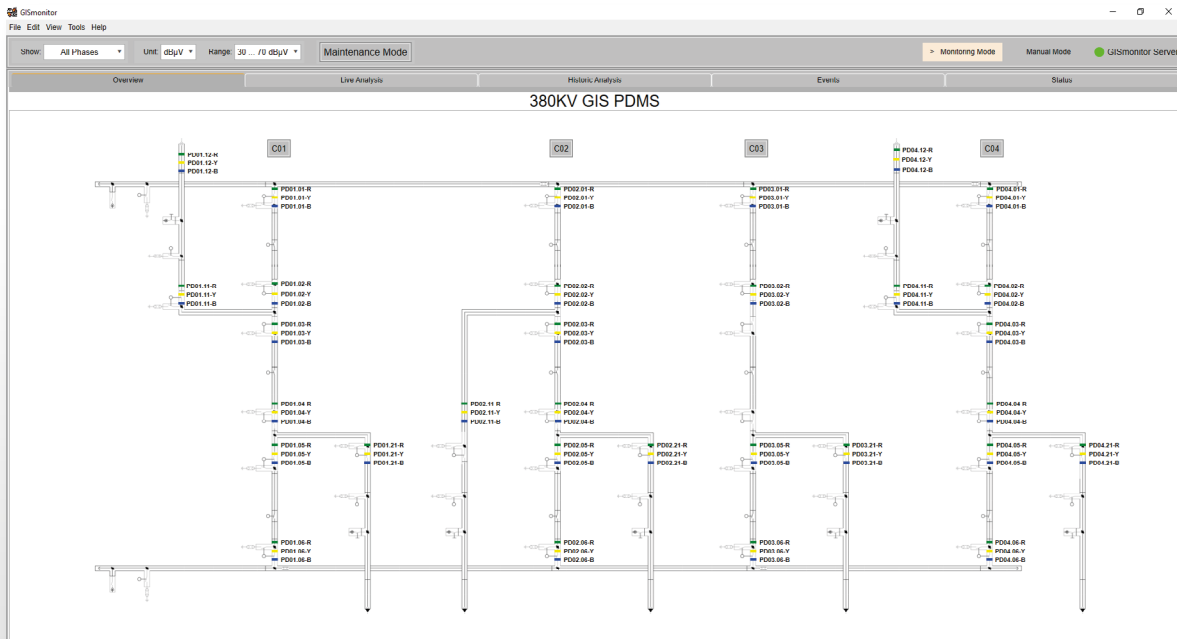


GISmonitor software



Partial discharge on-line monitoring on gas-insulated switchgear

LANGUAGE | EN

USER GUIDE

Power Diagnostix

NOTICE OF COPYRIGHT and PROPRIETARY RIGHTS

© Copyright 2024 by Power Diagnostix Instruments GmbH. All rights reserved.

The contents of this manual are the property of Power Diagnostix Instruments GmbH. No part of this work may be reproduced or transmitted in any form or by any means without the written permission of the publisher. Product and company names herein may be the trademarks of their respective owners.

Power Diagnostix reserves the right to alter the specification of its products from time to time without notice. Although every effort is made to ensure the completeness and accuracy of the information contained within this document, it is not warranted or presented by Power Diagnostix to be a complete and up-to-date description.

This manual supersedes all previous issues of this manual. Ensure that you are using the most recent issue of this document.

GISmonitor

Partial discharge on-line monitoring on
gas-insulated switchgear

LANGUAGE | EN

USER GUIDE

Contents

1	Introduction	5
2	Monitoring mode	6
2.1	Overview	6
2.2	Live analysis	8
2.3	Historic analysis	9
2.4	Alert and warning events list	10
2.5	Status overview	11
2.6	Configuration of the monitor mode.....	12
2.6.1	General settings	12
2.6.2	Device settings	13
2.6.3	Project settings	14
2.6.4	Alert settings	15
2.6.5	Rack settings	16
2.6.6	IEC 61850 settings	18
2.6.7	Administrative settings	19
2.6.8	Preferences.....	20
2.7	Edit mode.....	21
3	Manual mode.....	24
3.1	Measurement.....	24
3.2	HV Test.....	26
3.3	Sensitivity check.....	28
4	Index	30

1 Introduction

The *GISmonitor* software visualises the current readings of the partial discharge sensors of a gas-insulated switchgear (GIS) and indicates PD events or system notifications. The main panel of the software shows a layout of the GIS with the position of the individual sensors. Each sensor is linked with a specific input channel of a *GISmonitor* data acquisition board. The *GISmonitor* collects and stores the data of each connected sensor. This data is collected and analysed by the *GISmonitorServer* software and presented to the user in a variety of different visualisations in the *GISmonitor viewer* software. The software can operate in three modes. The default is the monitoring mode, in which trending data and system data are collected and stored in a database. Events will be created depending on pre-configured thresholds and several types of events are being logged. The manual mode is used for in-depth live visualisation and manual analysis of the current measurement data. Storing of the automated trending data and event creation is stopped as long as the manual mode is active. The maintenance mode stops the automated creation of events as well as the recording of measurement data during maintenance or rectification works.

GISmonitor software

PD on-line monitoring on GIS

2 Monitoring mode

In the upper left-hand corner is a context sensual quick settings toolbar. The software is capable of monitoring multiple GIS in one site. If multiple GIS are monitored, a selector to switch between the different voltages is shown on the left-hand side. Switching between the assets will change the currently displayed gas diagram and all context sensitive elements, e.g., settings for this specific GIS. When only one GIS is monitored, the selector will not be visible. Other settings that can be changed are the unit (dB μ V or dBm) that the software will display or the displayed range of visualised measurement data.

2.1 Overview

The GISmonitor software starts in the “Overview” tab. The sensors are visualised by coloured horizontal and vertical bars as shown in the figure below:

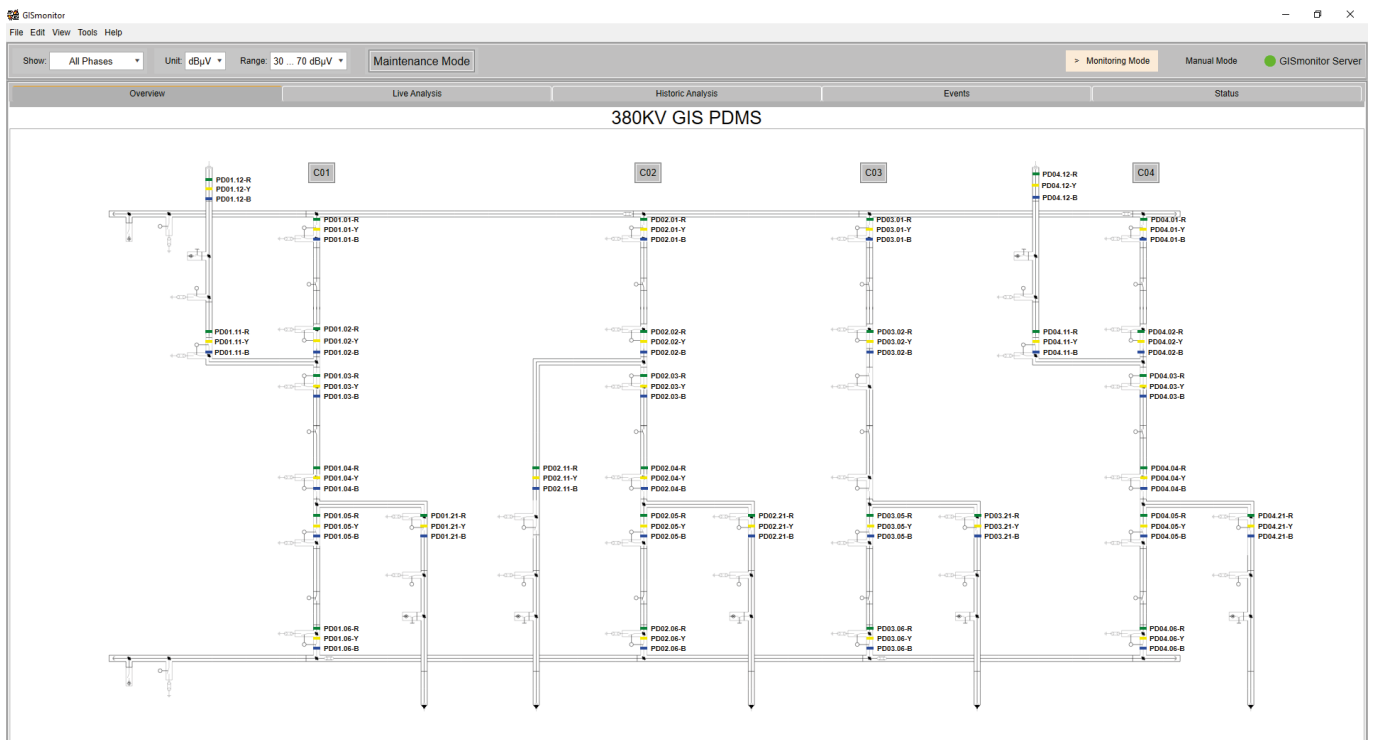


Figure 1: Overview diagram

The schematic of the GIS is a drawing file, which is automatically loaded by the software, whereas the sensors can be individually positioned in the software. Sensors can be created, positioned, and removed with the “View” -> “Edit Mode” menu item. The configuration of the schematic and sensors is provided by Power Diagnostix during the initial system configuration.

GISmonitor software PD on-line monitoring on GIS

The sensor colours can be changed in the “Edit” -> “Color Settings” menu. Default settings are green, yellow, and blue for appropriately working sensors of different phases. Black or grey sensors indicate false initiation or no connection to the related GISmonitor. In case the connection between the GIS and a frequency converter unit (FCU) is lost, a flashing orange frame will appear around the associated bar. In case of a low-level PD warning, the sensors colour will turn to orange, in case of a high-level PD warning to red.

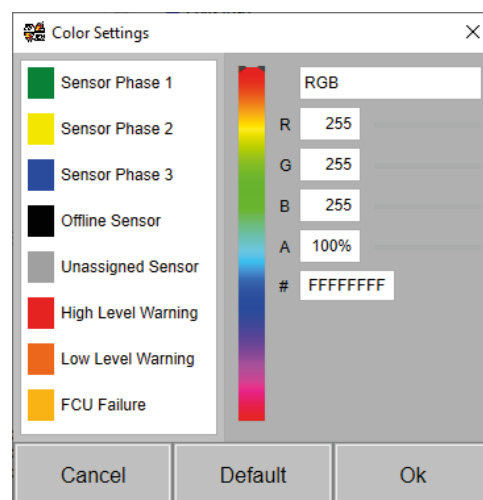


Figure 2: Colour settings

Double-clicking on a sensor displays a window showing the previous trending data and the current measurement values of this sensor. If all three sensors of a phase are combined, the software will display all three sensors in this window.

On the upper left-hand side, the name and the associated rack of the sensor is displayed. The last average value and last pulse peak value of the sensor are shown as well as the configured event thresholds. On the upper right-hand side an accumulated pattern is displayed. The graph beneath shows the average and pulse peak trending values for the last six minutes. If “history” is selected in the “Show Trending” dropdown list, the data of the last month can be viewed. To get more detailed information about the sensor, the analysis panel can be opened by clicking the “Analysis” button. The analysis panel provides the complete trending data and allows the comparison between different sensors (see also section 2.2).

Press the “Print” button to either print the current panel or to save it as a file on the IPC.

Press the “Copy” button to copy the content of the window to the clipboard.

Pressing the “>>” button enlarges the window and displays a larger pattern.

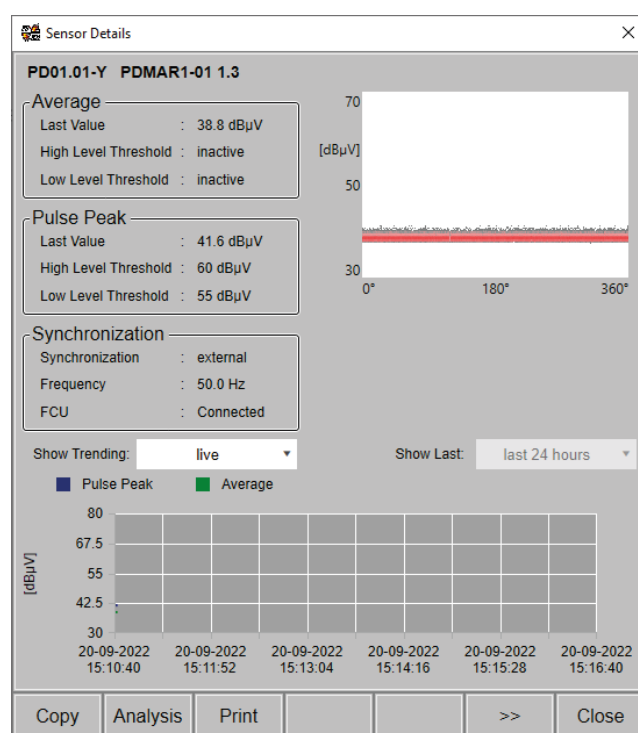


Figure 3: Sensor details

GISmonitor software

PD on-line monitoring on GIS

2.2 Live analysis

Up to 15 sensors can be selected in the overview tab and viewed simultaneously by clicking on the “Live Analysis” tab. The upper part of the panel shows a trending graph that depicts the average and pulse peak values of all selected sensors. In the lower part the patterns for the selected sensors are shown.

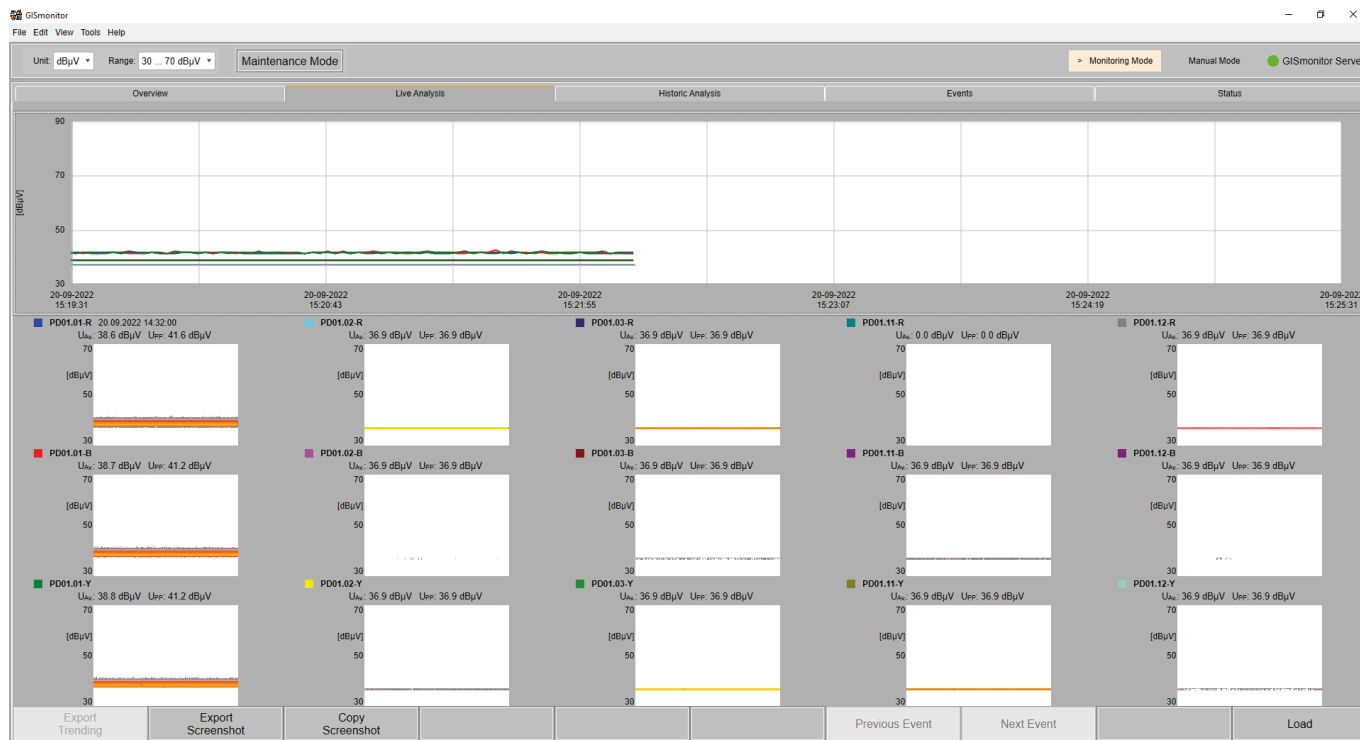


Figure 4: Panel for live analysis

2.3 Historic analysis

For a detailed analysis of the trending data, please select the “Historic Analysis” tab. Up to 15 sensors can be selected in the overview.

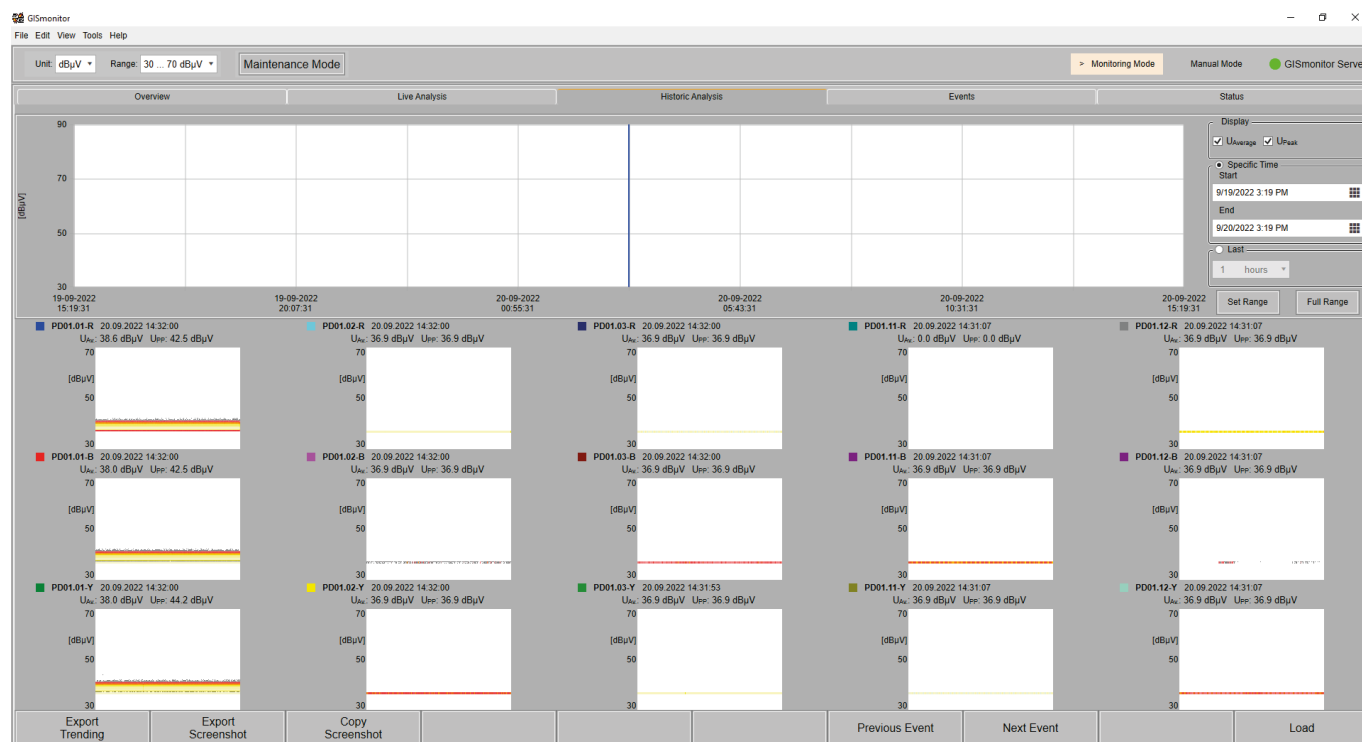


Figure 5: Panel for the historic analysis

The upper part of the panel shows the trending graphs for the average and pulse peak value, and the lower part shows the patterns of the selected sensors for the selected cursor position. Moving the cursor of the graphs will show the values at the new cursor position and will display the pattern next to this time.

Zooming and shifting of the graph in x-direction is done by selecting either the specific time or selecting the pre-defined interval and pressing the “Set Range” button. The “Full Range” button sets the zoom of the graph to a level, that the full range of the selected interval is shown.

By pressing the “Export Trending” button, the measurement data can be saved as an *.xlsx file.

The “Copy Screenshot” button will copy the content of the window to the clipboard. “Export Screenshot” will save the content of the window as a *.jpg file.

GISmonitor software

PD on-line monitoring on GIS

2.4 Alert and warning events list

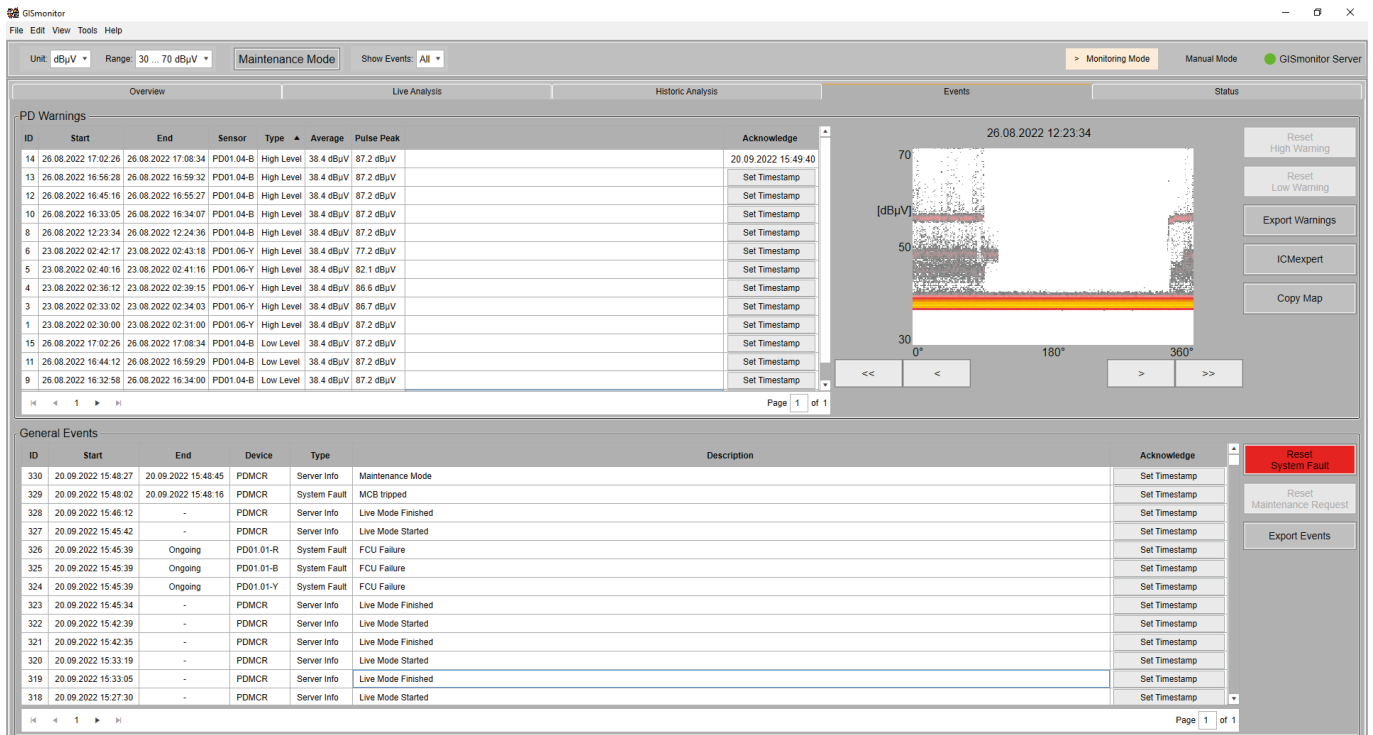


Figure 6: Events list

All alerts and warnings are stored and can be displayed in the events list, which can be accessed via the “Events” tab in the tab menu of the GISmonitor application. The “PD Warnings” list on the upper left-hand side displays the high-level and low-level warnings of all sensors. By clicking on a specific event, the corresponding coloured pattern is shown on the upper right-hand side. High-level and low-level warnings are triggered independently, relying on the respective alert threshold. Events are grouped and can contain several smaller events, depending on how long the threshold was surpassed. Each event of the group can be inspected separately by pressing the “<” or “>” button. Pressing the “<<” button will select the first event of the group, while pressing the “>>” button will select the last event. The “General Events” list at the bottom displays all maintenance and hardware events. Each event is tagged with a timestamp and provides information about the location, the type of error, and a short description. To acknowledge an event, you can click the “Set Timestamp” button, which will tag the event with date and time of acknowledgement.

Sensor high-level and low-level events as well as maintenance and hardware alerts can be reset by using the “Reset” buttons next to the respective list.

The event lists can be exported as .xlsx files by clicking the “Export Warnings” or “Export Events” button. The list shows the alarm and warning events sorted by the time they occurred. The list also shows if the alarm has triggered the relays of the I/O card (SCADA alarm).

2.5 Status overview

The GISmonitor software is providing a status overview of the whole monitoring system in the Status tab. The coloured overview indicates, among others, the status of the lightning protection, the heating, the network ring, the ventilation, and the uninterruptible power supply (USP) for every acquisition rack (PDMAR).

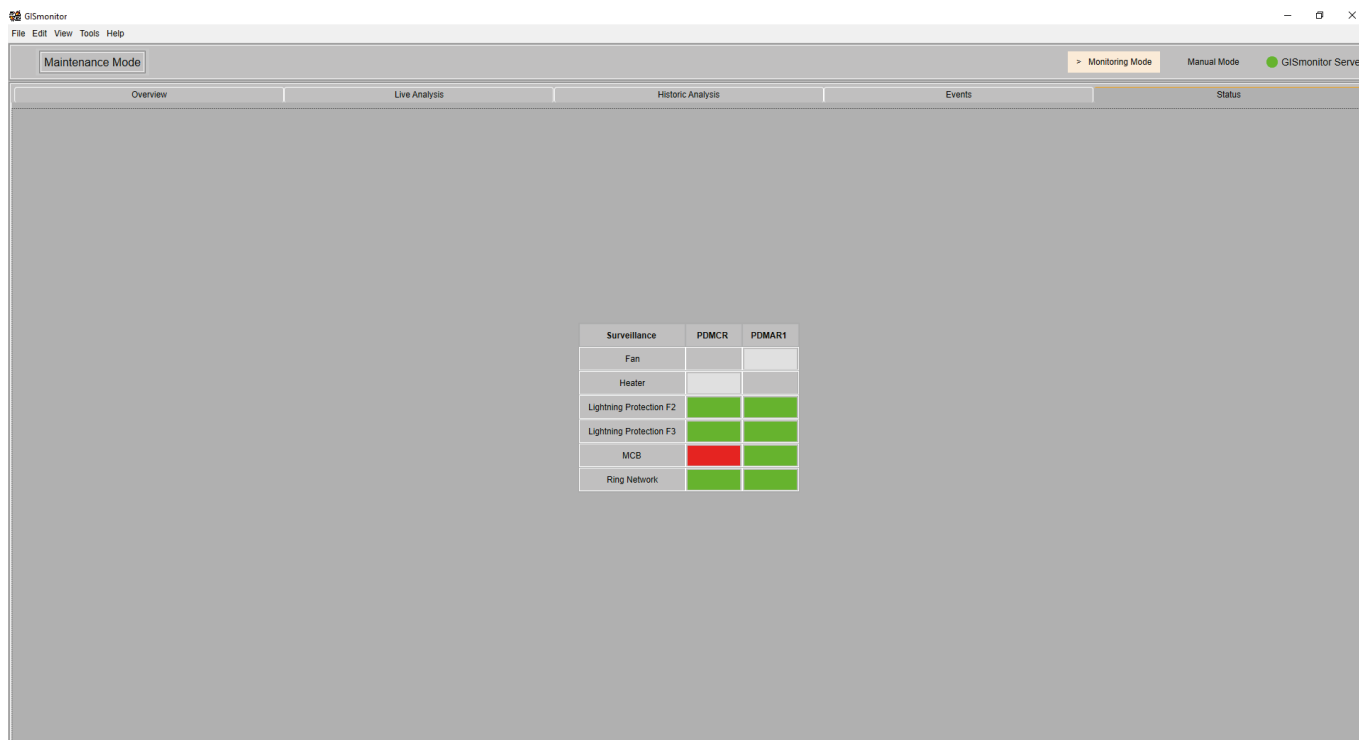


Figure 7: Status overview

A green coloured box indicates the device is in operation, while dark grey signifies that the device is not in operation. If the device is not available in the rack, the overview will show a light grey box, whereas white signifies that there's connection to the device.

GISmonitor software

PD on-line monitoring on GIS

2.6 Configuration of the monitor mode

Power Diagnostix provides the GISmonitor software completely set up and individually configured for your on-line partial discharge monitoring system (PDMS), so, generally, there is no need to change the following options.

Be aware that changing the set-up might corrupt the software functionality by worsen the detection and identification of partial discharges or preventing alarm and warning outputs.

Some changes will lead to a temporary disconnection between the control rack (PDMCR) and the acquisition rack (PDMAR). No data will be recorded during this timeframe.

2.6.1 General settings

The “General Settings” menu can be opened via “Edit” -> “General Settings”. The input field “Set-up” allows the configuration of the settings regarding the presentation of PD patterns. For instance, the lower level of detection (LLD) can be set individually depending on the level of the background noise. The constant phase shift of the displayed patterns referring to the synchronisation voltage can be defined for each phase.

In the centre of the dialogue box the synchronisation and gating settings for each PDMAR can be adjusted. The synchronisation can be switched between line and external synchronisation. To avoid long cables for synchronisation, the outdoor cabinets use line synchronisation by default.

In case a disturbance antenna (DA2) is used, external gating can be enabled, and a threshold can be defined. This will provide suppression of noise created by cell phones, corona effects, and similar.

At the bottom of the dialogue box the settings for the trending data analysis can be adjusted. The acquisition interval of trending can be selected. Depending on the settings for saving trending data and patterns to the hard disk, the estimated memory requirements are calculated, and the time till depletion of disk space is given.

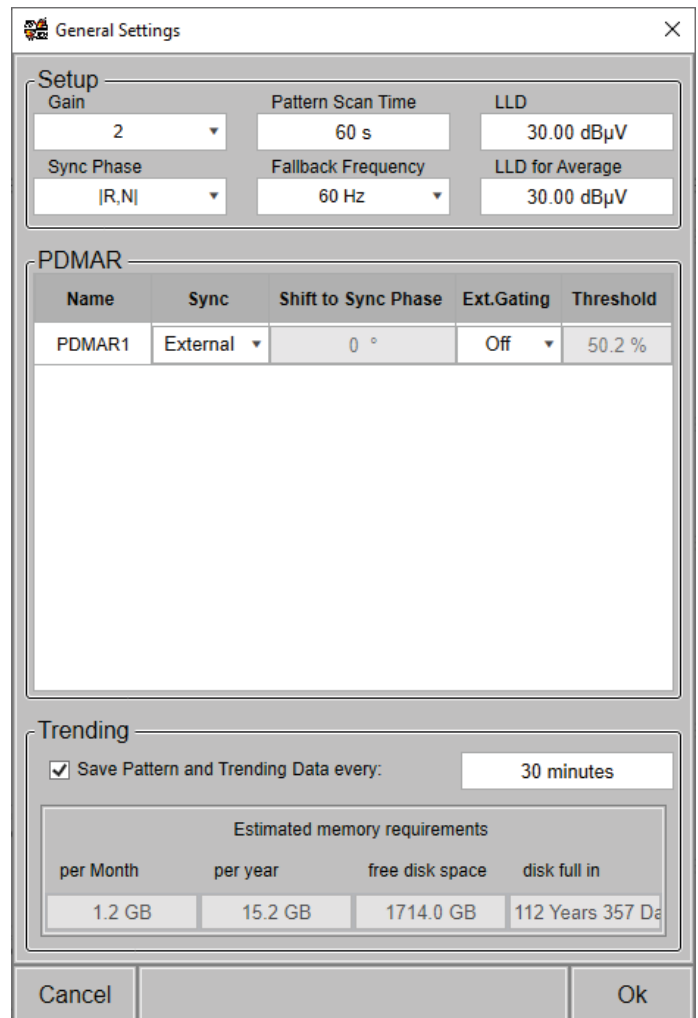


Figure 8: General settings window

2.6.2 Device settings

The settings for the connection between the GISmonitor software, the GISmonitor plug-in boards, and the UHF sensors can be adjusted in the Device Settings dialogue box. This dialogue box is opened by selecting the “Edit” -> “Device Settings” menu item.

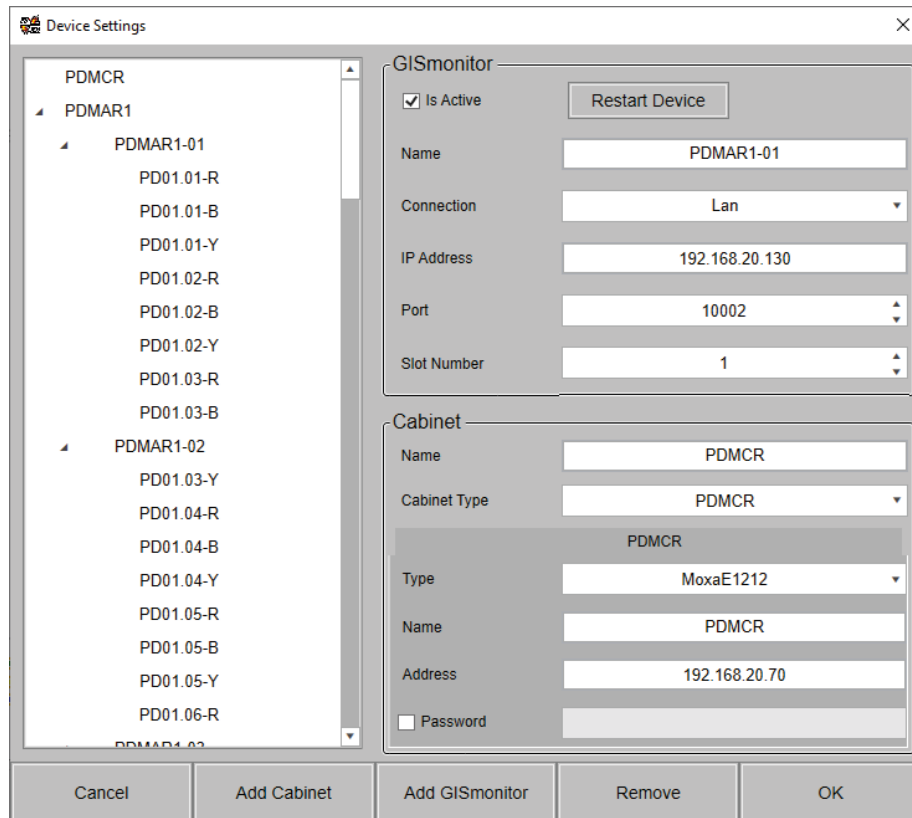


Figure 9: Device settings

General settings can be modified in the upper part of the right-hand side. To define a new GISmonitor, the correct cabinet has to be selected in the list on the left-hand side, and afterwards the “Add GISmonitor” button must be pressed. This creates a new entry in the tree on the left-hand side. Enter the settings for this new GISmonitor in the fields on the right-hand side. First the name of this GISmonitor must be assigned. Then the type of connection to this GISmonitor must be chosen, “USB” or “LAN”. The default setting is “LAN”, and the default port for the GISmonitor is 10002. The “IP address” must be selected according to the setting of the corresponding GISmonitor. Newer revisions of the GISmonitor can be restarted by the software by clicking on the Restart Device button at the top of the settings, otherwise the button is disabled.

If the partial discharge monitoring system (PDMS) should be extended with an additional acquisition rack, the “Add Cabinet” button must be pressed, and the cabinet type must be chosen. Afterwards a proper cabinet name must be given. Then all GISmonitors must be added to this selected cabinet.

GISmonitor software

PD on-line monitoring on GIS

2.6.3 Project settings

The main panel of the software displays a schematic of the GIS. The drawing file and the headline for the schematic can be selected by “Edit” -> “Project Settings”.

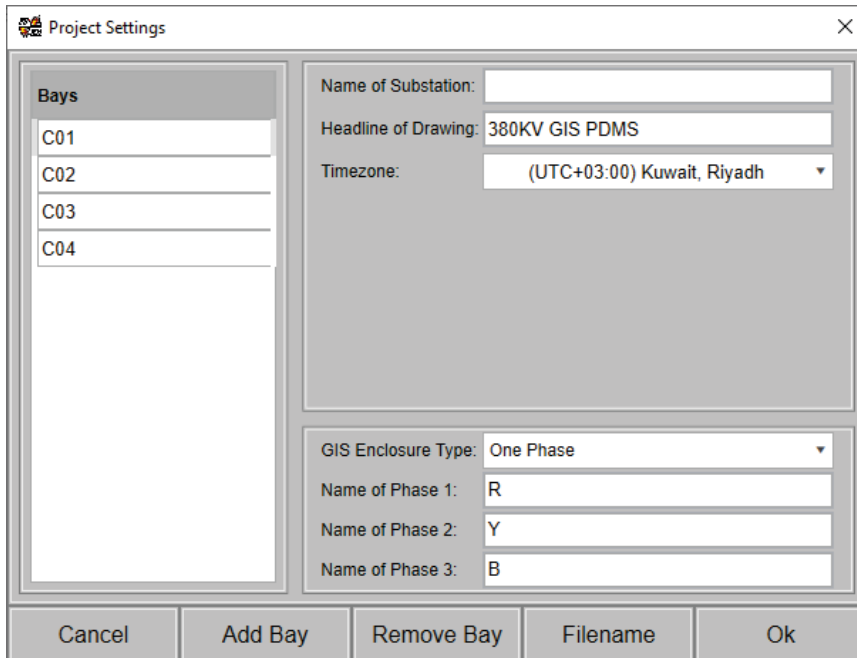


Figure 10: Project settings

The name of each bay can be changed on the left-hand side of the “Project Settings” dialogue box. On the right-hand side a user-defined name of the substation and a headline for the drawing can be set. The headline will appear above the schematic in the main panel. The file with the schematic of the GIS must be of WMF or SVG format. By clicking the “Filename” button, the file can be selected, and the “Preview” field displays the selected file. The GIS enclosure type can be set up as single- or three-phase enclosure. Press the “OK” button to load the selected file and display it in the main panel.

2.6.4 Alert settings

The alarm settings can be configured by selecting the “Edit” -> “Alert Settings” menu item. The dialogue box that appears is shown in the figure below.

Alert Settings (Group 1 (Default))

Section	Parameter	Value	
High Level Warning	Activate Upavg Threshold	55 dB μ V	
	Activate Upp Threshold	60.00 dB μ V	
	Minimal Detection Level	55.00 dB μ V	
	Minimal CR _{pd}	5 / s	
	Pattern Acquisition Time	60 s	
	Consecutive Patterns	1	
	In case of a warning	Save Pattern every	2 minutes
		For	30 minutes
		Until acknowledged	
Low Level Warning	Activate Upavg Threshold	50 dB μ V	
	Activate Upp Threshold	55.00 dB μ V	
	Minimal Detection Level	50.00 dB μ V	
	Minimal CR _{pd}	5 / s	
	Pattern Acquisition Time	60 s	
	Consecutive Patterns	1	
	In case of a warning	Save Pattern every	2 minutes
		For	30 minutes
		Until acknowledged	
Auto Reset	High Level Warning	<input checked="" type="checkbox"/>	
	Low Level Warning	<input checked="" type="checkbox"/>	
	Maintenance Request	<input checked="" type="checkbox"/>	
	System Fault	<input checked="" type="checkbox"/>	
	Battery Replacement	<input type="checkbox"/>	
Disable Manual Reset Of Ongoing Fault	High Level Warning	<input type="checkbox"/>	
	Low Level Warning	<input type="checkbox"/>	
	Maintenance Request	<input type="checkbox"/>	
	System Fault	<input type="checkbox"/>	
	Battery Replacement	<input type="checkbox"/>	
Free Disk Space Warning Level		10 GB	

Buttons: Cancel, Add Goup, Remove Goup, Define Goups, OK

Figure 11: Alert settings

The average and pulse peak values that trigger a low-level or high-level alert can be set individually. By surpassing this level, the measurement data will be evaluated using the respective detection level. The minimal count rate defines the number of pulses above the required detection level in a specified acquisition time to trigger an alert / warning event.

These alert settings can be defined for up to 16 groups in which the sensors can be included. Click on “Add Group” to create a new group. Pressing “Remove Group” will delete the currently selected group.

Note: Group 1 (default) can't be deleted. To assign a sensor to another group, press the “Define Groups” button and then click on the sensor's group entry to move the sensor to the desired group.

Bays	Sensor Name	Group
C04	PD04.12-Y	Group 1 (Default)
C04	PD04.12-R	Group 1 (Default)
C11	PD11.12-R	Group 1 (Default)
C11	PD11.12-B	Group 1 (Default)
C11	PD11.12-Y	Group 1 (Default)
C11	PD11.01-R	Group 1 (Default)
C11	PD11.01-Y	Group 1 (Default)
C11	PD11.01-B	Group 1 (Default)
C11	PD11.02-R	Group 1 (Default)
C11	PD11.02-Y	Group 1 (Default)
C11	PD11.02-B	Group 1 (Default)
C11	PD11.11-R	Group 1 (Default)
C11	PD11.11-Y	Group 1 (Default)
C11	PD11.11-B	Group 1 (Default)
C03	PD03.01-Y	Group 2

Buttons: Cancel, OK

Figure 12: Alarm group association

GISmonitor software


PD on-line monitoring on GIS

The default behaviour for automatic relay reset can be configured in the “Auto Reset” section, so that in case no respective event is active the relay will be automatically reset. In the “Disable Manual Reset of Ongoing Fault” section the manual reset of the relays can be blocked if an event is still ongoing.

A recommended configuration will be set up by Power Diagnostix during commissioning.

2.6.5 Rack settings

The online partial discharge monitoring system (PDMS) consists of the partial discharge measurement control rack (PDMCR) and a number of partial discharge measurement acquisition racks (PDMAR) or one rack for combined partial discharge measurement and control (PDMACR). To configure these racks, go to “Edit” -> “Rack Settings”.

 Rack Settings ✕

PDMCR					Indoor		
PDMCR							
No.	Surveillance	Contact	Trigger	Direction	Std/Off Color	Alarm/On Color	Event Message [FAIL]
D10	Lightning Protection F2	NO ▾	MaintenanceRequest ▾	Input ▾	 	 	Lightning Protection F2 tripped
D11	Lightning Protection F3	NO ▾	MaintenanceRequest ▾	Input ▾	 	 	Lightning Protection F3 tripped
D12	MCB	NO ▾	SystemFault ▾	Input ▾	 	 	MCB tripped
D13	Fan	NC ▾	None ▾	Input ▾	 	 	-
D14	-	NC ▾	None ▾	Input ▾	 	 	-
D15	Ring Network	NO ▾	MaintenanceRequest ▾	Input ▾	 	 	Ring Network opened
D16	-	NC ▾	None ▾	Input ▾	 	 	-
D17	-	NC ▾	None ▾	Input ▾	 	 	-
DIO0	High Level Warning	NC ▾	HighLevelWarning ▾	Output ▾	 	 	-
DIO1	Low Level Warning	NC ▾	LowLevelWarning ▾	Output ▾	 	 	-
DIO2	System Fault	NC ▾	SystemFault ▾	Output ▾	 	 	-
DIO3	Maintenance Request	NC ▾	MaintenanceRequest ▾	Output ▾	 	 	-
DIO4	-	NC ▾	None ▾	Output ▾	 	 	-
DIO5	-	NC ▾	None ▾	Output ▾	 	 	-
DIO6	-	NC ▾	None ▾	Output ▾	 	 	-
DIO7	-	NC ▾	None ▾	Output ▾	 	 	-

Cancel Test Relays Add Group Delete Group Ok

Figure 13: Rack settings for a PDMCR

GISmonitor software

PD on-line monitoring on GIS

The tabbed view shows all groups of racks that exist within the PDMS. Depending on the configuration of the PDMS various groups can exist. Each surveillance task can be configured individually, including the respective output of the relay contacts. To test the correct configuration of the output channels, press the “Test Relays” button to open a window where the state of the relay can be toggled. All channels are pre-configured and should not be updated without need. These settings have influence on the overview of monitored components presented in the “Status” tab as well as on the events generated by the PDMS.

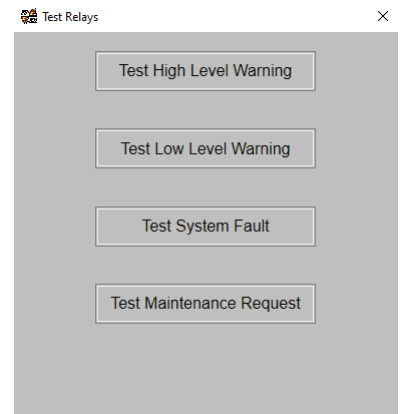


Figure 14: Relay test window

Rack Settings

PDMCR					Indoor		
PDMAR1							
No.	Surveillance	Contact	Trigger	Direction	Std/Off Color	Alarm/On Color	Event Message [FAIL]
D10	MCB	NO	SystemFault	Input	Green	Red	MCB tripped
D11	Lightning Protection F2	NO	MaintenanceRequest	Input	Green	Red	Lightning Protection F2 tripped
D12	Lightning Protection F3	NO	MaintenanceRequest	Input	Green	Red	Lightning Protection F3 tripped
D13	Ring Network	NO	MaintenanceRequest	Input	Green	Red	Ring Network opened
D14	Heater	NO	None	Input	Grey	Green	-
D15	-	NC	None	Input	Green	Red	-
D16	-	NC	None	Input	Green	Red	-
D17	Switching Operation Relay	NC	SwitchingOperation	Input	Green	Red	-
DIO0	-	NC	None	Output	Grey	Grey	-
DIO1	-	NC	None	Output	Grey	Grey	-
DIO2	-	NC	None	Output	Grey	Grey	-
DIO3	-	NC	None	Output	Grey	Grey	-
DIO4	-	NC	None	Output	Grey	Grey	-
DIO5	-	NC	None	Output	Grey	Grey	-
DIO6	-	NC	None	Output	Grey	Grey	-
DIO7	-	NC	None	Output	Grey	Grey	-

Buttons: Cancel, Test Relays, Add Group, Delete Group, Ok

Figure 15: Rack settings for a PDMAR

GISmonitor software

PD on-line monitoring on GIS

2.6.6 IEC 61850 settings

If the IEC 61850 service is installed, the IEC 61850 interface can be enabled and configured in the GISmonitor software. The network settings of the interface can be modified here as well as the edition that the IEC 61850 server uses. The timestamp can be in the UTC format or the configured local time of the PDMCR. Modifying these settings will restart the IEC 61850 server if it is running.

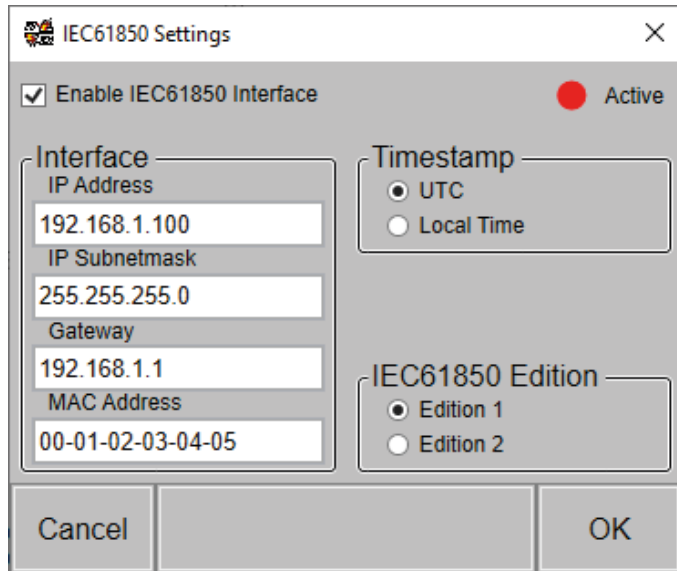


Figure 16: IEC 61850 settings

To start and initialise the IEC 61850 server, a physical network link to another network interface is required, otherwise the server won't start.

2.6.7 Administrative settings

For maintenance purposes such as installing the software or Windows updates, it may be necessary to restart or close the GISmonitorServer software. This can only be done on the PDMCR by pressing the “Start” or “Stop GISmonitorServer” buttons. It will not work if the GISmonitor software is used on a remote computer. The manual shutdown of the GISmonitorServer will disable the watchdog, which restarts the software in case of a failure. It will automatically be enabled when the GISmonitorServer is started again or the PMCR gets restarted.

To ensure that only authorised people change the settings of the software, a password can be requested. To enable this option, press the “Enable Password” button. If you choose this option, you have to set an administrator password. This opens a dialogue box prompting for a password.

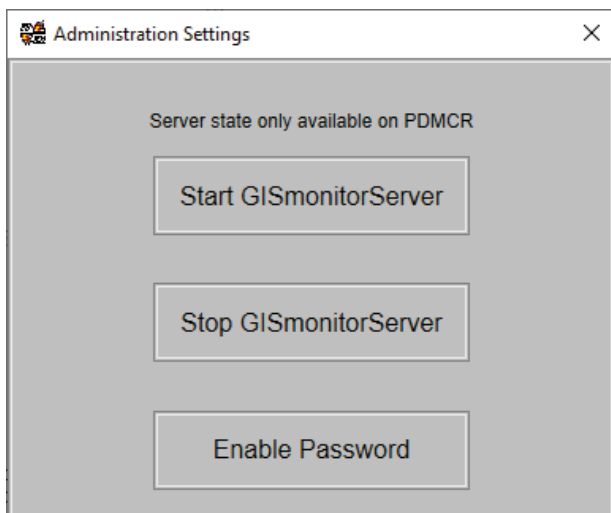


Figure 17: Administration settings

If a password is enabled, it can be disabled by pressing the “Disable Password” button and entering the current administrator password.

If an administrator password is enabled, changes of settings must be verified with this password. It is also required to enable or disable the maintenance mode.

GISmonitor software

PD on-line monitoring on GIS

2.6.8 Preferences

The GISmonitorServer settings can be modified in the preferences window. The GISmonitor software can connect to a remote GISmonitorServer software running on a PDMCR and control it. The PDMCR usually offers three network interfaces that can be used to establish a remote connection to the GISmonitorServer. A dedicated network is used to communicate to the GISmonitor plugin boards. The PDMCR IPC has the IP address 192.168.20.2, which is the default address pre-configured when using the software. When using a remote connection, usually one of the two remaining interfaces is used. The customer LAN is pre-configured to use DHCP. If this interface is used, the assigned IP address has to be used. If a SCADA or an IEC 61850 network is used, the PDMCR usually has a static IP address assigned, which must be used.

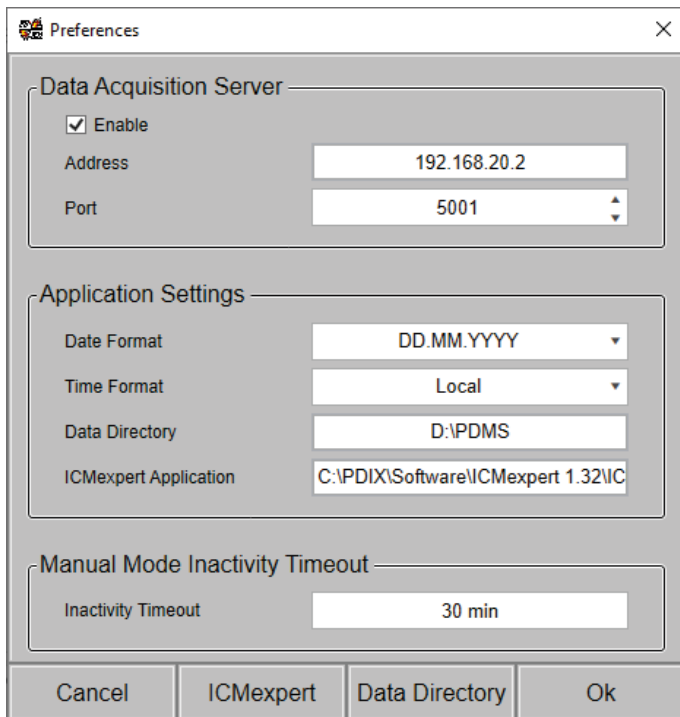


Figure 18: Preferences window

The application settings can be modified to display the date or time format to the desired format.

The GISmonitor software requires a data directory which will be used to save files for HV tests or the sensitivity check, as well as temporary files for use with the ICMexpert software. The folder can be selected with the “Data Directory” button. If the ICMexpert functionality should be used, the ICMexpert application has to be installed on the computer, and the application has to be linked by selecting it with the “ICMexpert” button.

The GISmonitorServer usually monitors the GIS using the monitoring mode. If the manual mode is used, a timeout has to be defined, after which the GISmonitorServer automatically switches back to the monitoring mode. To do so, modify the “Inactivity Timeout”. If the manual mode is used for an HV test or sensitivity check, this timeout will be ignored. Be aware that the use of the manual mode stops the continuous monitoring including the storing of data for the time that the manual mode is active.

2.7 Edit mode

The edit mode can be accessed by clicking on “View” -> “Edit” menu item. It allows changing the displayed elements in the single line diagram of the “Overview” tab and the sensor association of the GISmonitor plugin boards.

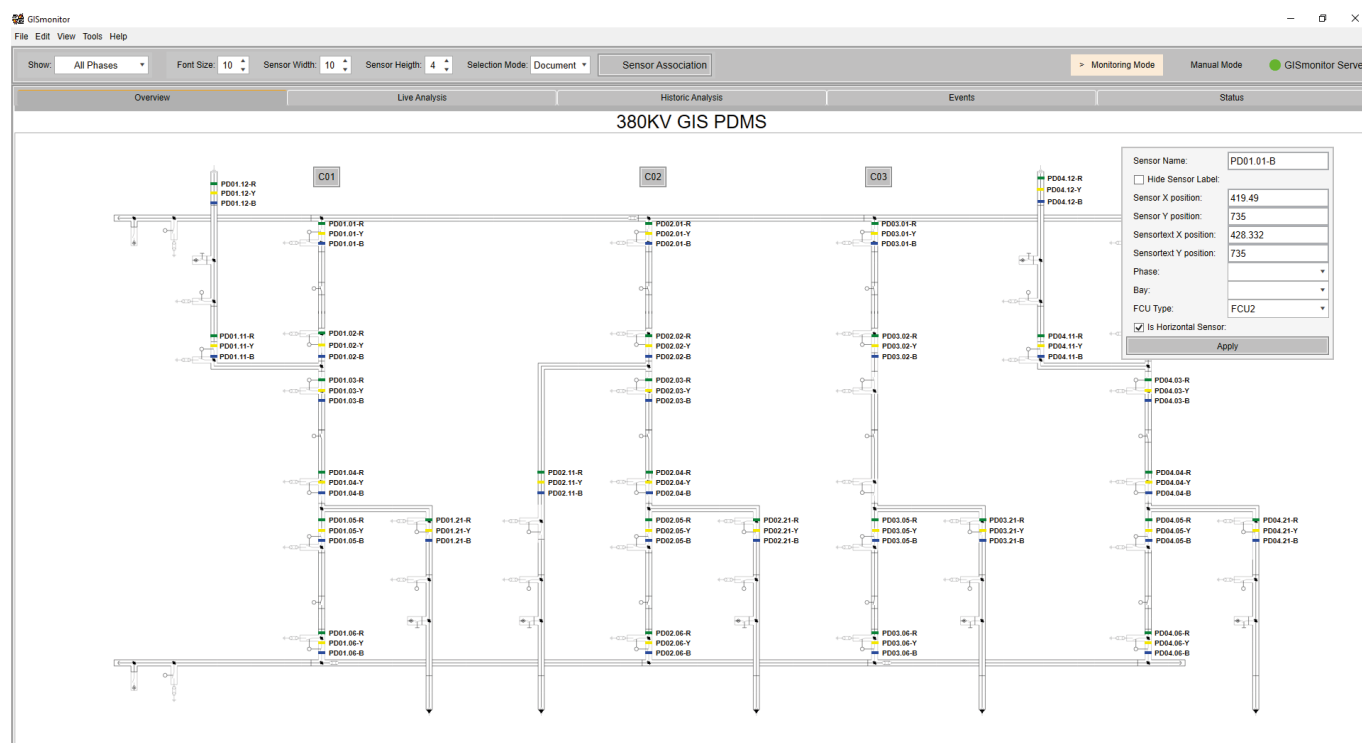


Figure 19: Edit mode

The menu bar offers options for changing the font size as well as the width and height of the sensors.

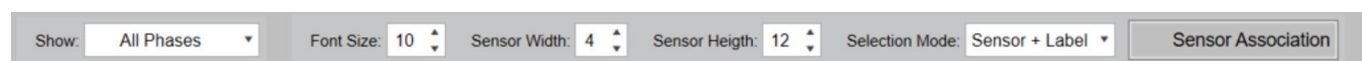


Figure 32: Menu bar of the edit mode

To edit the attributes of a displayed element, select the element type in the menu bar’s Selection Mode.

The following options are available:

- Multiple: Allows the selection of multiple sensors and corresponding labels.
- Sensor and Label: Allows the selection of one sensor and a corresponding label by clicking on either the sensor or the label. The selected sensor and label can then be dragged to a new position.
- Sensor: Allows the selection of one sensor by clicking on either the sensor or its label. The selected sensor can then be dragged to a new position.
- Label: Allows the selection of one label by clicking on either the sensor or the label. The selected label can then be dragged to a new position.
- Text: Allows the selection of a text element such as a bay or diameter. The selected text can then be dragged to a new position.

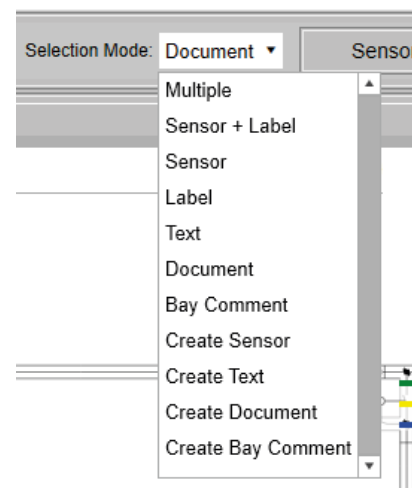


Figure 20: Available selection modes

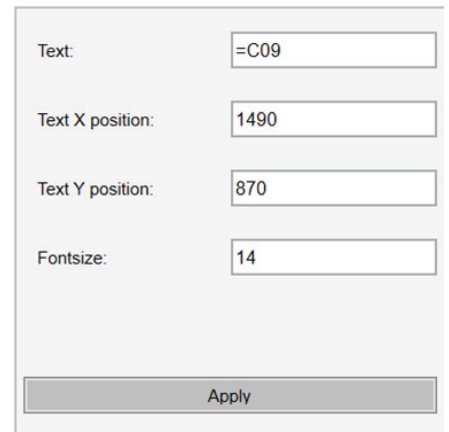
GISmonitor software

PD on-line monitoring on GIS

- Document: Allows the selection of a button element, which opens an attached document. The selected button can then be dragged to a new position.
- Bay Comment: Allows the selection of a button element, which opens a list which can be used to add comments like performed maintenance works with a timestamp or attach a file to it. The selected button can then be dragged to a new position.
- Create Sensor: By double clicking on a position within the single line diagram, an unassociated sensor is created. This sensor must be later assigned to a GISmonitor plugin board.
- Create Text: By double clicking on a position within the single line diagram, a text element is created.
- Create Document: By double clicking on a position within the single line diagram, a button element is created so that a document file can be linked to that button.
- Create Bay Comment: By double clicking on a position within the single line diagram, a button element is created so that a comment list can be linked to that button.

In edit mode the single line diagram shows an integrated pop-up window, which can be moved by dragging the window while the ctrl button is pressed.

With an element selected, options for this element can be edited in this window. Press Apply to permanently change and save the edited options.



Text:	<input type="text" value="=C09"/>
Text X position:	<input type="text" value="1490"/>
Text Y position:	<input type="text" value="870"/>
FontSize:	<input type="text" value="14"/>

Apply

Figure 21: Pop-up window for the change of element options

When the GIS is extended with new sensors or GISmonitor plugin boards, the newly created sensors must be assigned to the GISmonitor plugin board. By pressing the “Associate Sensors” button in the menu bar, a new window is opened, which shows a list of all GISmonitor plugin boards and all connected sensors on the left-hand side. The right-hand side presents a list of unassigned sensors. To assign a sensor to a GISmonitor plugin board’s channel, select the correct plugin board’s channel, which has no sensor assigned. Now select the sensor that is going to be assigned to this channel and click on the “Assign” button.

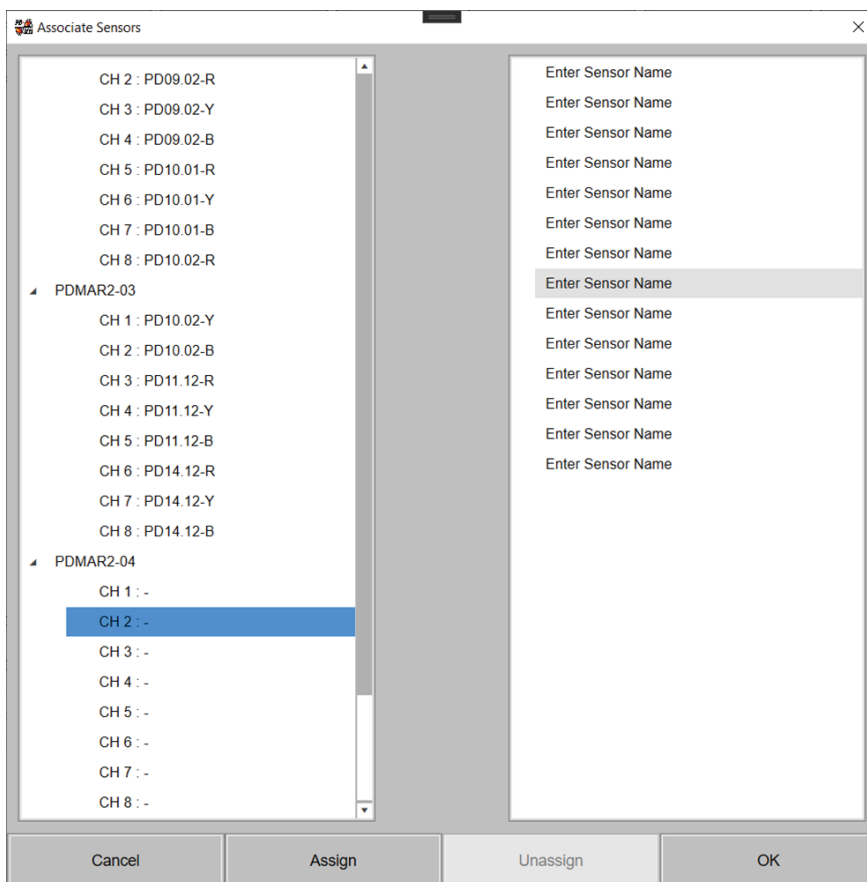


Figure 22: Sensor assignment window

To unassign a sensor, proceed as follows: First select the plugin board’s channel, then press the “Unassign” button. This will remove this assignment, and the sensor will appear in the list on the right-hand side.

The channel assignment is done during the factory acceptance test (FAT) and the commissioning of the PDMS. An incorrect change of the sensor associations will impact the overall performance of the system and can lead to false assumptions regarding events or failures of the site. It is highly recommended to only exchange sensors after consulting a Power Diagnostix professional.

GISmonitor software

PD on-line monitoring on GIS

3 Manual mode

For commissioning purposes, the GISmonitor software offers a special commissioning display, which shows relevant data in three different modes: A view for normal operation, a view for HV tests, and a view to perform the sensitivity verification. The manual mode can be started by pressing the “Manual Mode” indicator at the top of the window.

3.1 Measurement

By selecting the measurement tab, up to 24 sensors show the scope and pattern displays of partial discharge activities versus phase position as black and white or coloured patterns. Additionally, for every sensor the recorded PD scope values of the last 50 periods can be shown as continuous 3D view or a larger phase-resolved partial discharge (PRPD) pattern by double clicking on a sensor.

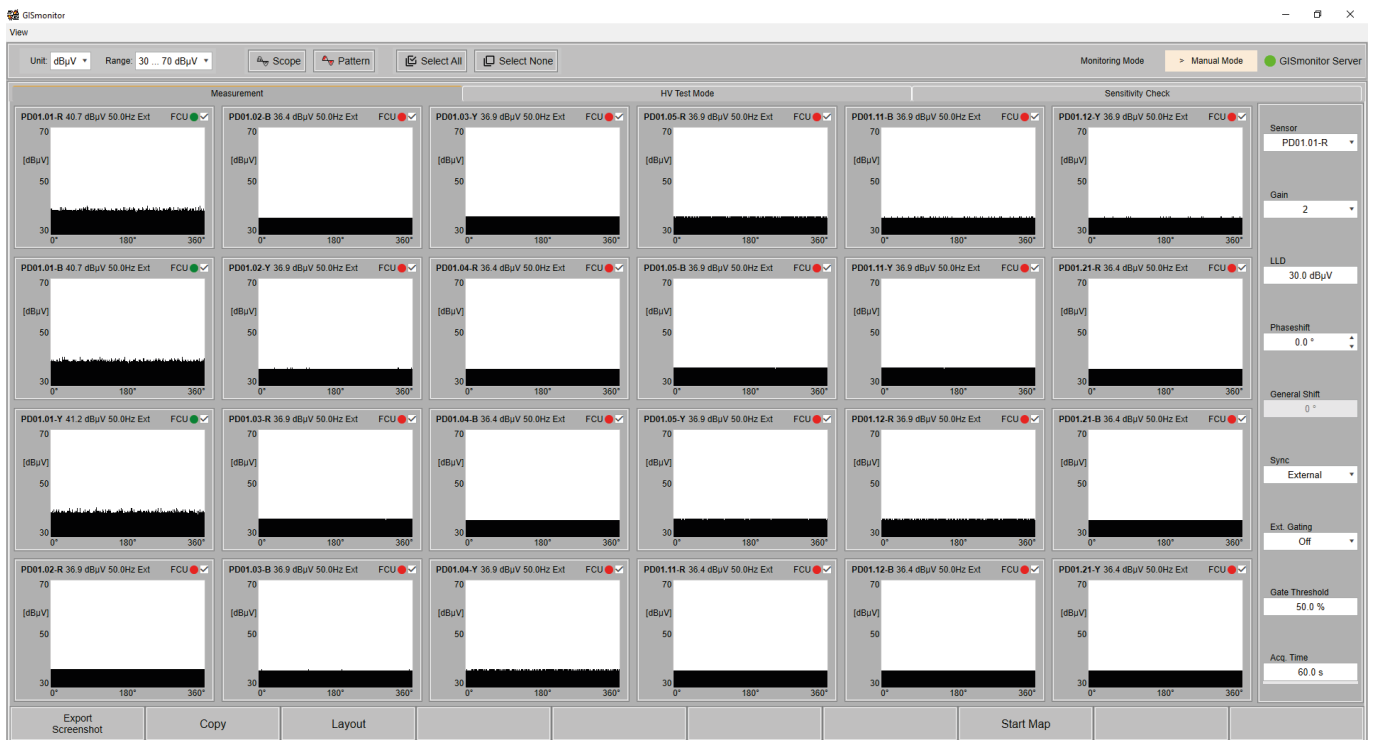


Figure 23: Measurement tab of the commissioning panel

The sensors, whose data should be displayed in the commissioning panel, can be selected from the single line diagram in the monitoring mode or by pressing the “Layout” button of the commissioning panel. Depending on the screen resolution the settings of the currently selected sensor are shown beneath or next to the patterns.

GISmonitor software PD on-line monitoring on GIS

The current view can be saved as PNG or BMP file to hard disk with the “Export Screenshot” button or can be copied to clipboard with the “Copy” button.

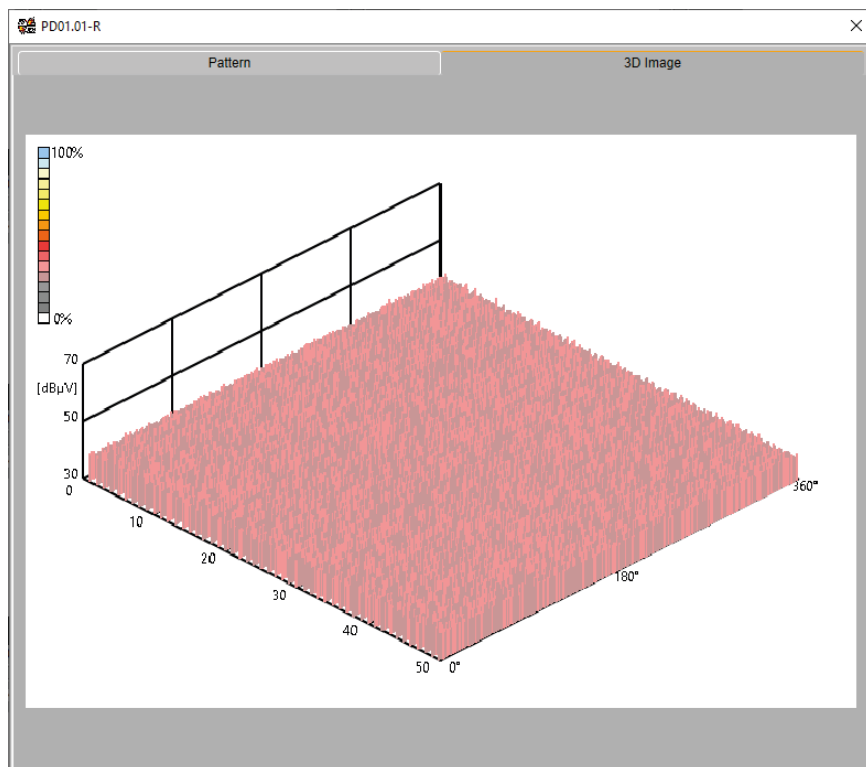


Figure 24: 3D view of sensor data

GISmonitor software

PD on-line monitoring on GIS

3.2 HV Test

The HV test is performed on site before a GIS is finally energised. Different bays of the GIS are energised one after the other, and the UHF sensors located in these GIS sections are checked for PD signals originating from possible defects. This menu allows the operator to select the relevant sensors and record possible partial discharge signals as well as the profile of the applied voltage. This creates a playback that can serve as a fingerprint of the GIS and can be checked and viewed as many times as desired.

By selecting the “HV Test Mode” tab, a dedicated mode for HV testing purposes is opened. In the HV test mode the synchronisation is enforced to “external”, and the phase shift of each sensor is set to 0°. First the “Test Section” that is under testing has to be named. Afterwards, by pressing the “Start Recording” button, every scope image, every pattern image, and the measured voltage are stored for the duration of the recording.

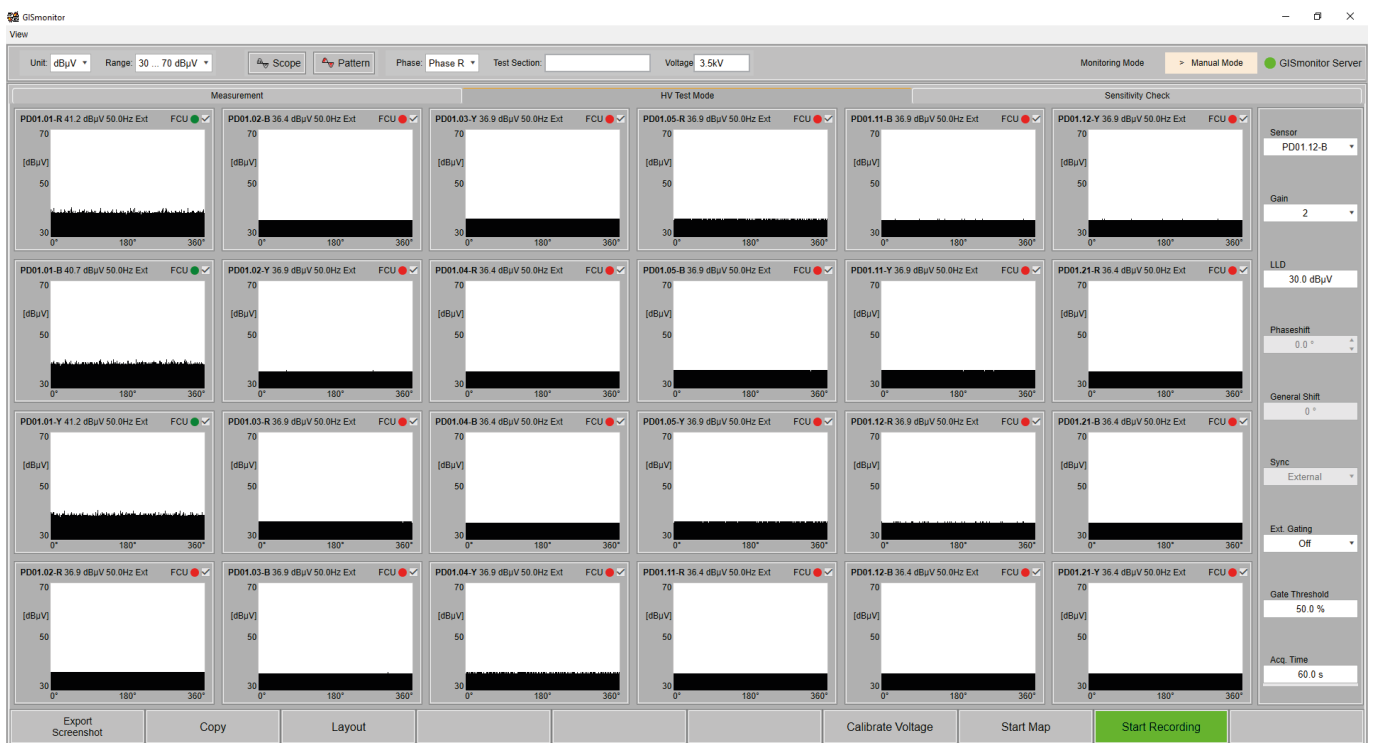


Figure 25: HV tests tab

After applying an external voltage, the measured voltage can be calibrated with the “Calibrate Voltage” button. A click on the “Stop Recording” button finishes the HV test for the current section. Afterwards, all data is processed and saved in the data directory, which is specified in the preferences.

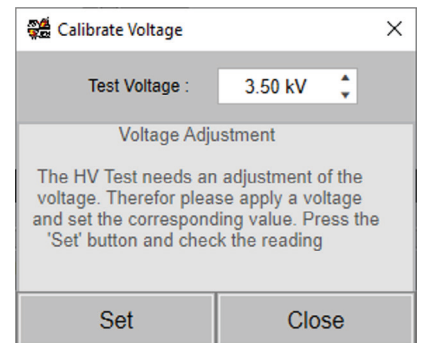


Figure 26: Voltage adjustment

GISmonitor software

PD on-line monitoring on GIS

To review a measurement, use the “View” -> “HV Replay” menu item. This replay view can load and display up to 24 hvt files. Depending on how many files are shown, the software displays either just the recorded images or the images and, next to them, a trending graph including pulse peak values and the recorded voltage. If only images are shown, the corresponding trending graphs can be displayed by clicking on the Trend button in the menu bar at the top of the panel. To display only the images again, press the “Image” button.

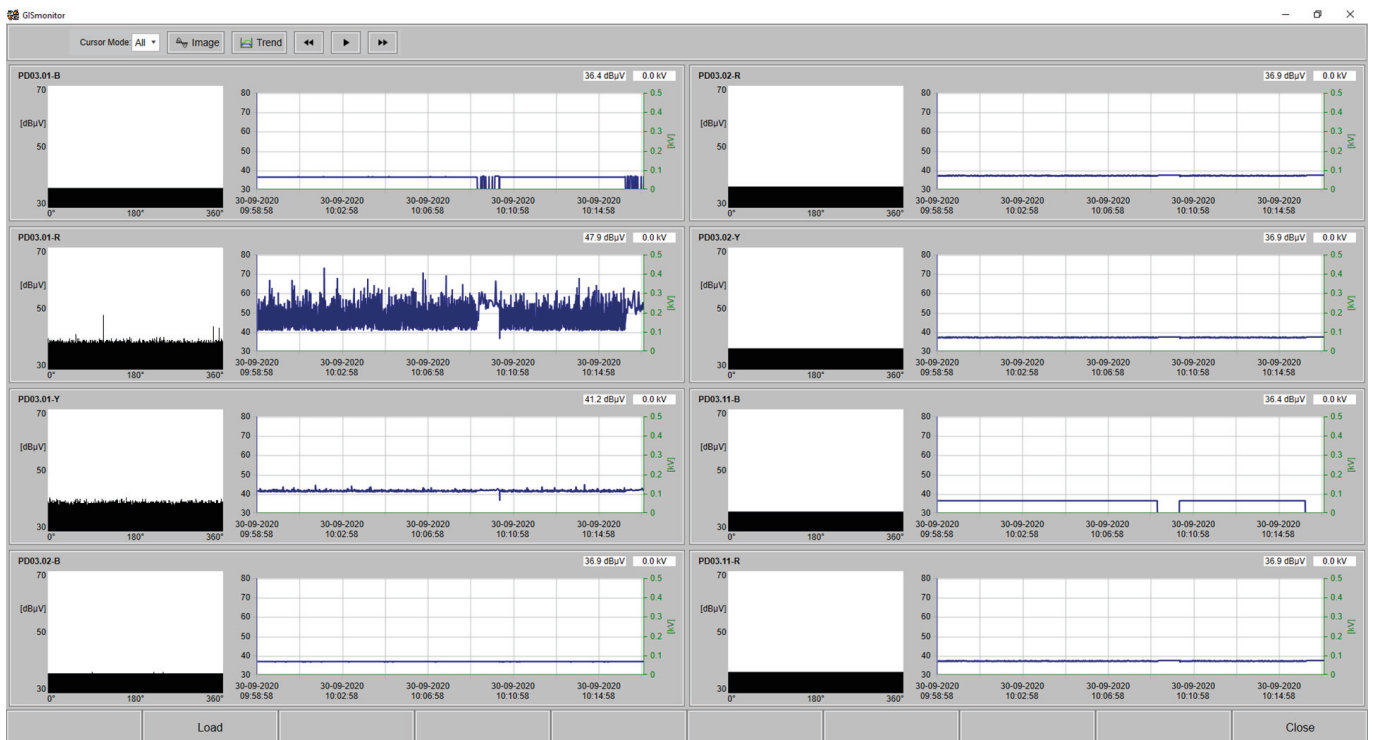


Figure 27: HV tests panel with trending graphs active

The recorded HV measurement can be replayed with the Play button. Additionally, the cursor in the trending graph can be moved to replay the measurement at a faster speed or to show specific sections of the measurement.

GISmonitor software

PD on-line monitoring on GIS

3.3 Sensitivity check

By selecting the “Sensitivity Check” tab, up to six sensors can be used to perform the sensitivity verification.

The sensitivity check menu/feature has been developed in order to ease the commissioning activities for the so called ‘sensitivity verification’ step. Before the HV test can be performed on site, it is necessary to perform the sensitivity verification in order to ensure that the UHF sensors are able to pick up a signal coming from a possible defect located inside the GIS enclosure. This is done by injecting with a calibrator into a sensor and reading the signal from the closest sensors. Since a GIS can have hundreds of sensors, the sensitivity check menu helps keeping track of every sensor that has been checked.

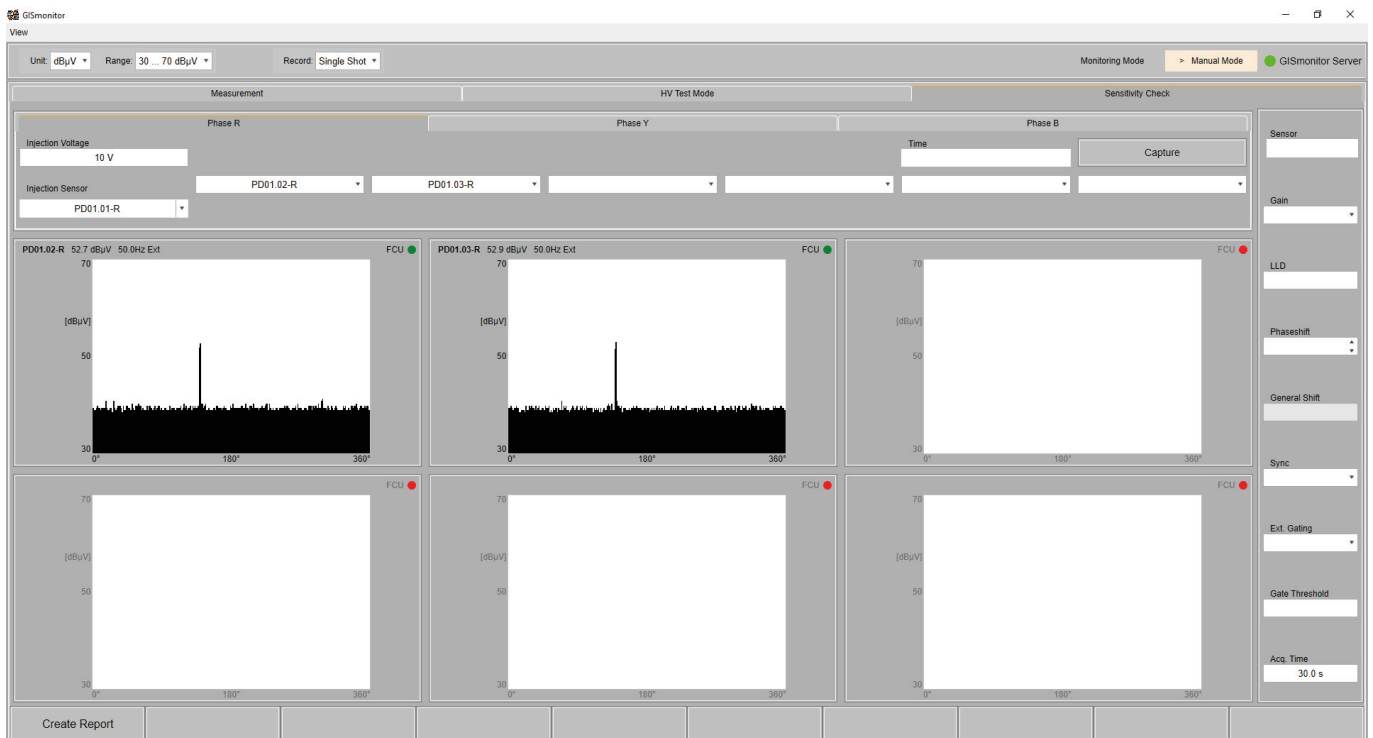


Figure 28: Panel for sensitivity checks with one tab for every phase

First a given injection sensor must be chosen from the Injection Sensor dropdown list, or the name of an injection sensor can be entered. The signal of the injected voltage should be visible at the nearest sensors to verify that a fault that occurs in-between these sensors can be detected. The value of Injection Voltage should be set to the voltage injected by the calibrator CAL2B.

The software takes a single shot measurement (scope image), a 3D series of 50 accumulated scope images, or a PRPD (map), depending on the selection in the Record dropdown list of the toolbar.

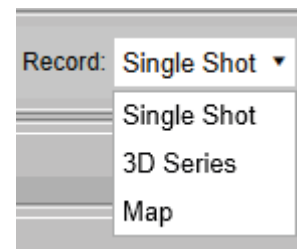


Figure 29: Record modes

GISmonitor software PD on-line monitoring on GIS

By pressing the “Capture” button, the software will take the appropriate recording. After the measurement, a pop-up window will be shown, and the measurement can be stored in the data directory with the “Ok” button.

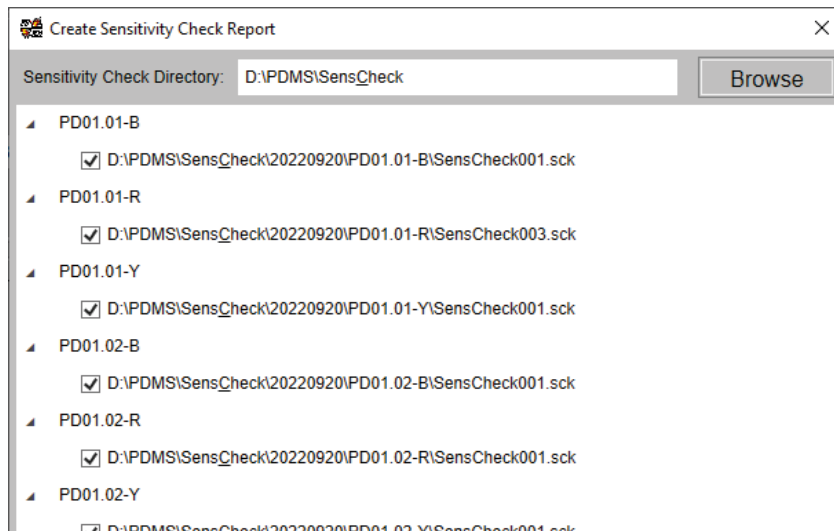


Figure 30: Saving sensitivity check data

The software offers the creation of an automated report for completed sensitivity checks. A click on the “Create Report” button of the “Sensitivity Check” tab brings up a report window for the choice of the data directory. Clicking the “Create Report” button of the report window will create a Word file and paste in all the measurement data including the scope images, 3D series images, and the PRPDs.

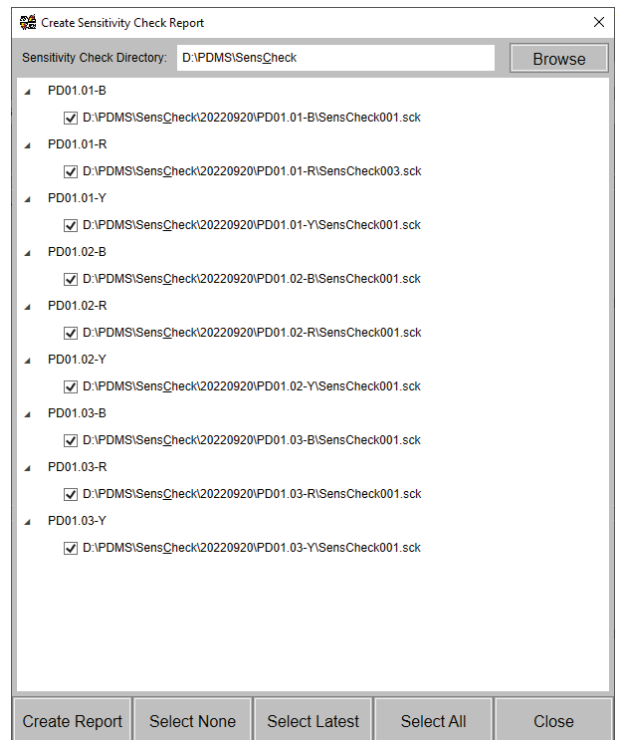


Figure 31: Window for creating a sensitivity check report

4 Index

3D

3D view 24, 25

A

Administration 19

Alarms 10, 12, 15

Alerts 10, 15

Average value 7

C

CAL2B 28

Calibrator 28

Commissioning display 24

D

DA2 12

Data directory 20, 26, 29

Device settings 13

Disturbance antenna 12

E

Edit mode 21

Events 5, 10, 17, 23

Export 9, 10, 25

G

GISmonitorServer 5, 19, 20

H

High-level warnings 10, 15

Historic analysis 9

HV test 20, 26, 28

I

ICMexpert 20

IEC 61850 18, 20

Inactivity timeout 20

L

Last average value 7

Last pulse peak value 7

Live analysis 8

LLD 12

Low-level warnings 7, 10

M

Maintenance mode 5, 19

Manual mode 5, 20, 24

P

PDMACR 16

PDMAR 11, 12, 16, 17

PDMCR 12, 16, 18, 19, 20

Phase shift 12, 26

Preferences 20, 26

Project settings 14

PRPD pattern 24, 28

Pulse peak value 7, 9

R

Rack settings 16, 17

Record modes 28

Replay 27

Report 29

S

SCADA alarm 10

Selection modes 21

Sensitivity check 20, 28, 29

Sensor assignment 23

Sensor details 7

Settings 6, 7, 12, 13, 14, 15, 16, 17, 18, 19, 20, 24

Single line diagram 21

T

Trending 5, 7, 8, 9, 12, 27

Trending graph 8, 27

U

Uninterruptible power supply 11

USP 11

W

Warnings 10

Z

Zoom 9



GISmonitor software

Partial discharge on-line monitoring on gas-insulated switchgear

LANGUAGE | EN

USER GUIDE

Power Diagnostix Systems GmbH · Vaalser Strasse 250 · 52074 Aachen ·
Germany · Telephone +49 241 74927 · Fax +49 241 79521 · www.pdix.com

GISmonitor_SW_UG_e1.00 April 2024

© Power Diagnostix Systems GmbH 2024