

What's special about the Report Edition?

The free Report Edition of the MeggerBook Cable application allows for seamless report creation and offers the same features as the full version of MeggerBook Cable while limiting the data storage options as follows:

- Measurements, analyses and reports are not permanently stored in the database
- While cable import and storage are not limited, a maximum of 5 cables can be created using the cable editor of the Report Edition

What kind of reports can be created?

The MeggerBook Report Edition can create reports based on the measurement and test data of the following Megger systems:

- Test vans (Centrix, Centrix City, System R30, Compact City and Variant)
- TDRs (Teleflex VX, Teleflex SX)
- Sine wave testers (VLF Sinus 45 / 62)
- VLF CR test systems with smart card option (TDS 40/60 and VLF CR 40/60)

How to install the MeggerBook Report Edition?

Double-click the setup file provided on the USB drive which was shipped with your device or download the latest version from the Technical Library on the Megger website (Support → Technical Library → Software and firmware).

For the correct operation of the application your PC has to comply with the following system requirements:

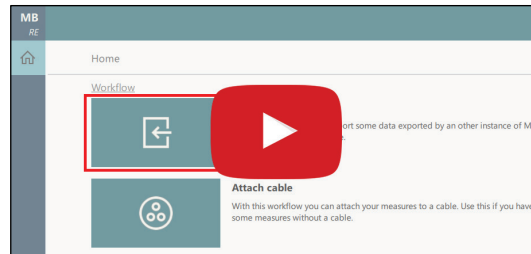
- Processor: Intel i5 or higher
- RAM: min. 4 GB
- Display: min. 1920 x 1080 pixels
- Operating system: 64 Bit, Windows 7 or newer

To install the software, double-click the executable file downloaded from the site and follow the instructions of the install wizard.

How to create a report?

Step 1: Export the measurement data from your device to a USB flash drive.

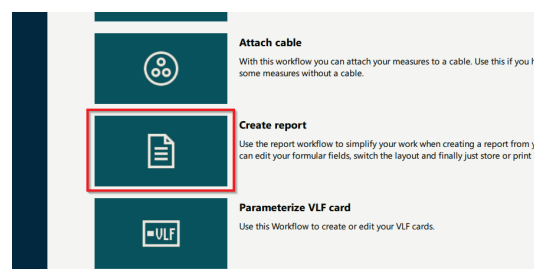
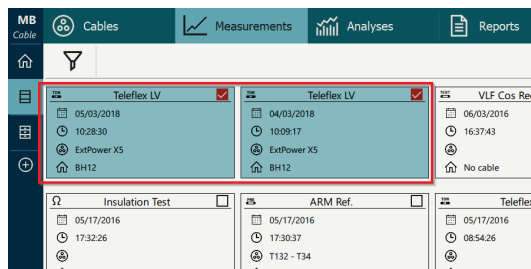
Step 2: Import these data into MeggerBook Report Edition using the import workflow from the start screen.



Step 3: To make sure that the report template is automatically pre-filled with the relevant cable data, the just imported data has to be assigned to the cable the measurement / test was conducted on. If the cable does not yet exist in the database, it has to be imported or created (Database → Cables → ⊕) first.



Step 4: Select the data to be included in the report either directly from the database or via the designated workflow.



Step 5: Prepare and print your report using your preferred or self-created report template.

