

Leak detection and monitoring of water supply networks

868 MHz



sebaKMT
by Megger®

Your water network in sight at all times

Billions of people have to be supplied with drinking water every day. The early detection of leaks is therefore a central issue for every water supplier to ensure a reliable water delivery to customers.

In many places, leaks occur due to outdated pipe networks, poor maintenance, material fatigue or overuse:

The water, which was previously treated at great expense, escapes in enormous quantities without reaching the consumers. Supply failures and increased production costs as well as immense secondary damage are the consequences. That is why every minute counts when it comes to locating broken pipes and leaks. Reliable equipment that enables accurate measurements, is easy and quick to operate and can be used anytime and anywhere.

Thanks to decades of experience as a manufacturer of leak detection systems, SebaKMT offers a comprehensive product portfolio, from early leak detection to the quantification of losses and pinpoint location.

Ease of use as well as reliable and accurate measurement results have always been the focus of our SebaKMT products.

sebaKMT
by Megger®



NOISE LEVEL LOGGER - NETWORK

SmartEAR	8-11
Sebalog N-3	12/13

PRESSURE AND FLOW MEASUREMENT

Sebalog D-3	16/17
Sebalog P-3-1	18/19
Sebalog P-3-Mini	18/19

ULTRASONIC FLOW MEASUREMENT

Temporary installation	20/21
UDM 300	
UDM 500	
Permanent installation	22/27
UDM 501	
SebaFlow Classic / SebaFlow-BAT	

NEW

SmartEAR

Next generation IoT-Logger



CORRELATION

Correlux Family	30-35
C-3 & C-30	

LINE LOCATION

Ferrolux	50/51
Carloc	52
Easyloc	53
Pipe Pecker RSP 3	53

ACOUSTIC AND TRACER GAS LOCATION

HL 50-BT	36/37
HL 7000 & HL 700	38-41

OTHER INFORMATION

SebaKMT Water test van	56/57
Accessories	58-61
Contact	64/65

WEB SOFTWARE (CLOUD-SOLUTION)

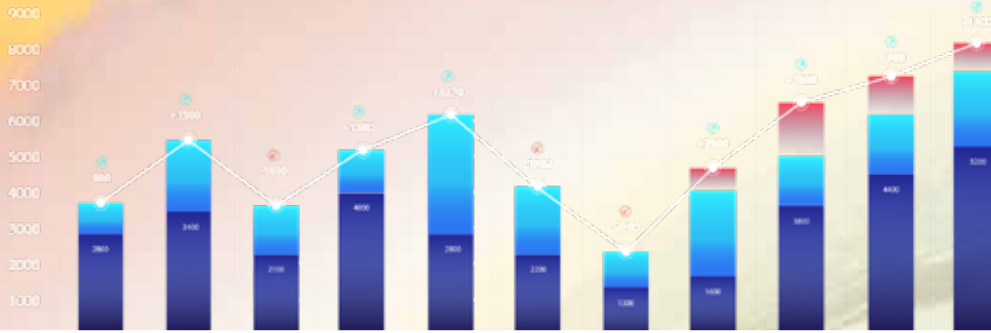
POSEYEDON	44/47
------------------	--------------



POSEYEDON

Keep an eye on your water network

Monitoring







SmartEAR

SmartEAR

IoT noise logger for permanent monitoring and leakage detection

- Readout and installation via SmartEAR-Go! App
- Automatic data transfer to POSEYEDON
- Real-time measurement
- Integrated reception test
- Pre-installed nano SIM card
- Manual upload of audio files possible

Technical data

Dimensions : Height Diameter	115mm (122 mm with antenna) 69 mm (79 mm max.)
Weight	450 g
Supply	Lithium-Battery 3,6 V / 13 Ah
Operating time Charge time	up to 9 years
Operating temperature	-20° C ... +70° C
Radio performance	10 mW
Communication	NB-IoT, LTE-M, Bluetooth® Low Energy



Seba pro tip:

The real-time measurement means that you are already in a position to locate possible leakages and to initiate further steps!

SmartEAR – the new generation noise and frequency logger

Efficiency and premium quality are crucial for drinking water supply. Modern measuring and detection technologies offer powerful tools to efficiently detect leaks in drinking water networks and thus ensure constant water supply through permanent online monitoring.

SebaKMT launches a completely revised noise and frequency logger concept to the market this year. For this purpose, SebaKMT product management investigated about the most important market requirements worldwide, such as overall performance, battery life, maintenance, easy handling, quick installation even for large quantities, attractive acquisition costs, and combined these with the newest technical solutions. The result is the SmartEAR IoT noise/frequency logger. Robust and durable housing materials paired with a powerful lithium-ion battery enable a runtime of up to 9 years. Installation can be reliably carried out in a few automated steps within the shortest possible time, using the dedicated developed smartphone app SmartEAR-GO!. Once in operation, the SmartEAR loggers use the intelligent POSEYEDON cloud algorithms to detect, determine and localise leaks in the drinking water network. Convince yourself about the new IoT noise logger generation SmartEAR from SebaKMT!

SmartEAR-GO! Installation App

In just a few steps, guided by the app, you can install any SmartEAR in a very short time. All you need is the SmartEAR logger, a smartphone or tablet and the SmartEAR-GO! app optimised for Android and IOS. The app can be downloaded free of charge and, in addition to the installation routine, offers other helpful and clever functions, such as real-time measurement on site, manual upload of audio files and an integrated network strength test function.

Customised settings, like SmartEAR logger measurement or upload times are possible with the SmartEAR-GO! app. During installation, assign the SmartEAR logger either to an existing measuring point or quickly create a new one.

Get excited about our new combination of SmartEAR logger, SmartEAR-GO! app and POSEYEDON!



SmartEAR	
Product description	Order number
SmartEAR, NB-IoT noise logger without SIM card *)	1014081
SmartEAR, NB-IoT noise logger with SIM card (Telekom EU) *)	1014081-001
SmartEAR, NB-IoT noise logger with SIM card (Vodafone) *)	1014081-002
SmartEAR, NB-IoT noise logger with SIM card (O2 Telefonica) *)	1014081-003
SmartEAR, NB-IoT noise logger with SIM card (Telekom EU extended) *)	1014081-004
SmartEAR, NB-IoT noise logger with SIM card (Telekom North America) *)	1014081-005
SmartEAR, NB-IoT noise logger with SIM card (Telekom Global) *)	1014081-006
*) with loop, rod antenna, magnet adapter and battery	

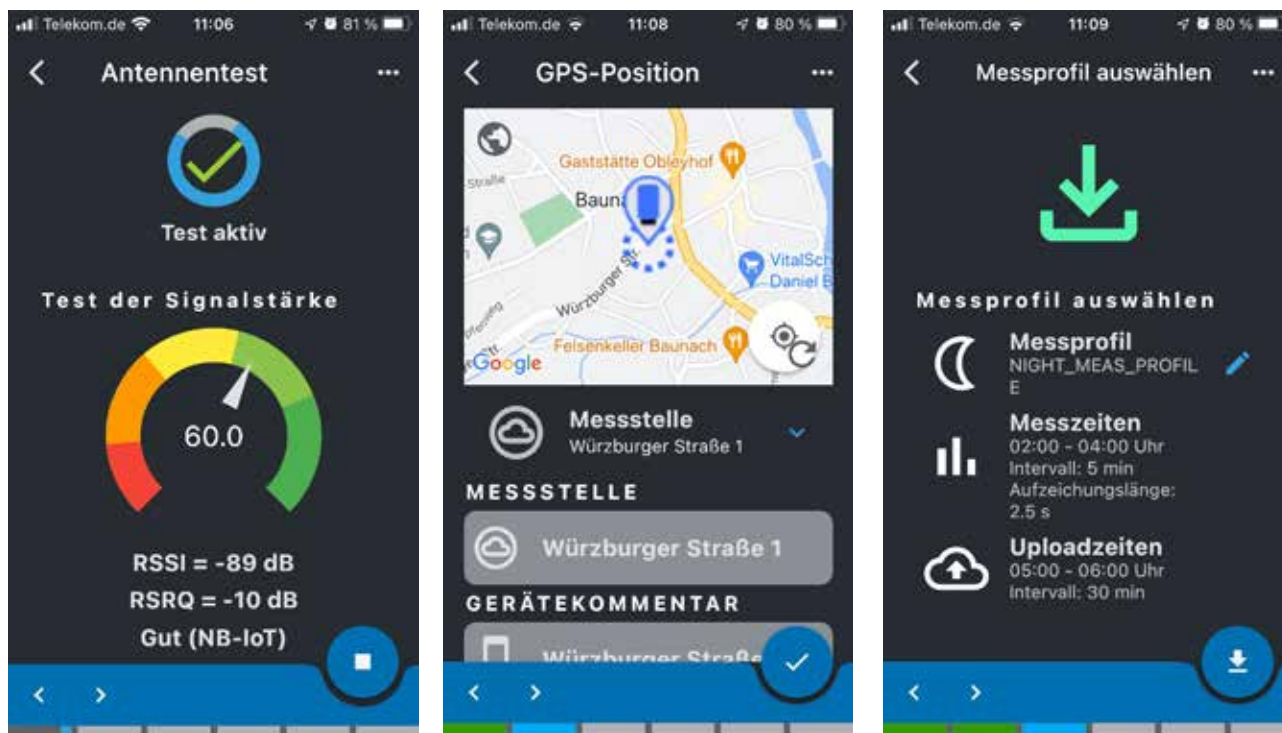
Suitable accessories can be found on page 55

Installation via app

■ Deploy – or also installation routine

Point 1 after the BT scan of a SmartEAR is the installation routine.

This is followed by 6 individual steps to put a SmartEAR into operation with maximum feedback at a measuring point. Each of these steps can be skipped using < > keys. The progress is shown at the very bottom by the 6 bars. Blue means currently in progress, green means completed.



■ Other features of the SmartEAR-GO! App

In the main menu, both the steps listed in the installation routine are accessible individually, as well as even more functions ...

Read:

Device information, measurement profile, battery level, device ID, firmware as well as firmware update.

Programming:

e.g. change measurement times, upload times or length of noise recordings.

Read audio:

Readout via BT of the sound recordings, playback of these via smartphone as well as upload to Poseyedon via smartphone (uses mobile radio, e.g. 4G)

Service:

Triggering a measurement data upload via the SmartEAR (uses NB-IoT or LTE-M), server information, Save log files and share with Seba Tech support, reset SmartEAR to factory settings.

Poseyedon:

Open own Poseyedon access on smartphone.

Press Release SmartEAR

„Handlich, robust, langlebig und so einfach und schnell zu installieren ...“ das sind die Aussagen unserer bisherigen Kunden, die den IoT-Geräuschlogger SmartEAR von SebaKMT in Verwendung haben.

Das kleine Kraftpaket, mit einer Batterielaufzeit von bis zu 9 Jahren, lässt sich bequem und flexibel in Unterflurhydranten aber auch Streckenschiebern unterbringen. Bei sehr engen Platzverhältnissen kann dank des 360°-Ring-Magnetadapters, der SmartEAR auch seitlich am Vierkant befestigt werden, um somit eine möglichst optimale Geräuschkopplung sicherzustellen.

Im Schacht angebracht zeigt die SmartEAR-GO! App ihre Stärke. Zur maximalen Sicherheit während der Installation bietet die App eine geführte Installations-Routine. Anhand dieser durchläuft der Anwender alle relevanten Schritte. Ein sehr nützliches Feature ist beispielsweise der Antennentest. Dieser wird mit geöffnetem Deckel gestartet, misst im Sekundentakt die vorliegende Signalstärke und Qualität, und zeigt so die sich ergebende Signaldämpfung bei geschlossenem Deckel. Der Anwender weiß somit direkt, ob sich die vorliegende Messstelle ohne weiteres Zutun verwenden lässt oder ob ggf. die Signalstärke verbessert werden sollte.

Hier zeigen sich die Vorteile der IoT-Funktechnologie. Dank des verbauten NB-IoT / LTE-M Kombimoduls können in den allermeisten Fällen die Messstellen ohne weiteres verwendet werden. Falls doch das Funksignal verbessert werden muss, bietet der SmartEAR verschiedene externe Antennenlösungen als Zubehör. Auch bietet SebaKMT bei Bedarf Ersatzschachtdeckel eines deutschen Herstellers aus Kunststoff-Komposit an. Diese verfügen über eine Verkehrsauglichkeitszertifizierung und können somit auch in vielbefahrenen Straßen verwendet werden.

Installieren geht mit dem SmartEAR aber auch noch schneller. Einige Städte und Regionen weltweit verfügen bereits über eine starke NB-IoT Netzabdeckung. In diesen Fällen können besonders große Stückzahlen des SmartEAR schnellstmöglich installiert werden, indem der Logger lediglich eingeschaltet und im Schacht platziert wird. Der SmartEAR ist standardmäßig ab Werk bereits für die traditionelle Nachtmessung zwischen 2-4 Uhr vorprogrammiert, und beginnt somit automatisch in der folgenden Nacht die Suche nach Leckagen. Erhält ein Kunde von SebaKMT eine Lieferung von SmartEAR sind diese bereits seinem Cloud-Kundenkonto zugewiesen. Die jeweiligen Messdaten gehen direkt in die Cloud des Anwenders ein. Die spezifischen GPS-Positionen des SmartEAR können entweder vor Ort in Sekunden mittels der SmartEAR-GO! App erfasst und gespeichert werden, oder erst später im Büro über die Messstellen-Manager-Funktion der Poseydon Cloud zugewiesen werden.

Einmal in Betrieb ermittelt der SmartEAR täglich die Leckwahrscheinlichkeit im Trinkwassernetzwerk anhand smarterer Algorithmen und verbesserter Messmethodik ... lesen Sie hierzu mehr im nächsten Teil und erfahren Sie etwas über vordefinierte und konfigurierbare Messprofile, Permanentmessung und dem integrierten Bewegungssensor ... ach ja – und er kann auch korrelieren!

SebaKMT

Produktmanagement, 18.07.2022



Sebalog N-3

Technical data	
Dimensions	115 x 45 mm Ø
Weight	400 g
Supply	Internal battery
Operating time	5 years in standard conditions
Protection class	IP68
Operating temperature	- 20 °C ... + 60 °C
Data memory	100 days
Radio range	80 m, depending on local conditions
Interface	Bi-directional, wireless transmission

Automatic leak location - correlating network

Der Sebalog N-3 ist mit den bewährten Techniken wie Lift & Shift oder dem Patrouillieren aus dem Täglichen Alltag nicht mehr wegzudenken.

Die N-3 messen den Geräuschpegel (dB) und die Frequenzen (Hz) einer Leckage zeitgleich. Während der Pegel alleine nur das generelle Vorhandensein einer Leckage dokumentiert, liefert er in Verbindung mit der Frequenz noch die ungefähre Entfernung im Verhältnis zu anderen Loggern. Zusätzlich werden Audiodateien gespeichert.

Die SebaKMT verfolgt seit Jahren die «easy GO» Philosophie die es erlaubt, mit wenig Handgriffen alle Geräte zu bedienen, Einstellungen zu ändern und Daten auszuwerten.

Logger-ID	26.05.2012	27.05.2012	28.05.2012	29.05.2012	30.05.2012	31.05.2012	01.06.2012	02.06.2012	03.06.2012	04.06.2012	05.06.2012	06.06.2012	07.06.2012	08.06.2012	09.06.2012
6425. LOG 009	1 / 1dB / 100Hz	1 / 1dB / 100Hz	1 / 1dB / 100Hz	1 / 1dB / 100Hz	1 / 1dB / 100Hz	1 / 1dB / 100Hz	1 / 1dB / 100Hz	1 / 1dB / 100Hz	2 / 2dB / 100Hz	1 / 1dB / 100Hz	1 / 1dB / 100Hz	1 / 1dB / 100Hz	1 / 1dB / 100Hz	1 / 1dB / 100Hz	1 / 1dB / 100Hz
6321. LOG 002	34 / 21dB / 300Hz	29 / 19dB / 200Hz	31 / 19dB / 300Hz	31 / 20dB / 250Hz	30 / 20dB / 200Hz	32 / 21dB / 200Hz	29 / 19dB / 200Hz	30 / 20dB / 200Hz	30 / 20dB / 200Hz	29 / 18dB / 300Hz	23 / 15dB / 200Hz	23 / 15dB / 200Hz	24 / 16dB / 200Hz	24 / 16dB / 200Hz	24 / 16dB / 200Hz
6332. LOG 003	13 / 8dB / 350Hz	7 / 7dB / 40Hz	12 / 7dB / 500Hz	8 / 7dB / 60Hz	12 / 7dB / 450Hz	12 / 7dB / 450Hz	12 / 7dB / 450Hz	10 / 6dB / 450Hz	12 / 9dB / 100Hz	14 / 8dB / 500Hz	4 / 4dB / 50Hz	4 / 4dB / 50Hz	4 / 4dB / 50Hz	5 / 5dB / 50Hz	5 / 5dB / 50Hz
6324. LOG 004	27 / 18dB / 200Hz	29 / 19dB / 200Hz	27 / 18dB / 200Hz	29 / 19dB / 200Hz	27 / 18dB / 200Hz	27 / 18dB / 200Hz	30 / 20dB / 200Hz	27 / 18dB / 200Hz	26 / 17dB / 200Hz	26 / 17dB / 200Hz	26 / 17dB / 200Hz	26 / 17dB / 200Hz	24 / 16dB / 200Hz	27 / 18dB / 200Hz	29 / 19dB / 200Hz
6327. LOG 010	3 / 2dB / 200Hz	4 / 3dB / 200Hz	2 / 2dB / 100Hz	6 / 4dB / 250Hz	3 / 2dB / 200Hz	3 / 2dB / 200Hz	3 / 2dB / 200Hz	3 / 2dB / 200Hz	6 / 4dB / 250Hz	4 / 3dB / 250Hz	3 / 2dB / 200Hz	4 / 3dB / 250Hz	4 / 3dB / 250Hz	4 / 3dB / 250Hz	4 / 3dB / 250Hz
6337. LOG 001	16 / 12dB / 200Hz	35 / 33dB / 40Hz	19 / 13dB / 200Hz	20 / 17dB / 60Hz	19 / 13dB / 200Hz	19 / 13dB / 200Hz	19 / 13dB / 200Hz	34 / 32dB / 40Hz	17 / 15dB / 40Hz	32 / 30dB / 40Hz	9 / 9dB / 40Hz	35 / 33dB / 40Hz	41 / 39dB / 40Hz	41 / 39dB / 40Hz	41 / 39dB / 40Hz
6346. LOG 005	34 / 18dB / 800Hz	32 / 17dB / 800Hz	34 / 18dB / 800Hz	32 / 17dB / 800Hz	34 / 18dB / 800Hz	34 / 18dB / 800Hz	34 / 18dB / 800Hz	34 / 18dB / 800Hz	34 / 18dB / 800Hz	36 / 19dB / 800Hz	34 / 18dB / 800Hz	36 / 19dB / 800Hz	36 / 19dB / 800Hz	36 / 19dB / 800Hz	34 / 18dB / 800Hz
6411. LOG 007	16 / 11dB / 200Hz	21 / 16dB / 100Hz	21 / 16dB / 100Hz	21 / 16dB / 100Hz	21 / 16dB / 100Hz	21 / 16dB / 100Hz	21 / 16dB / 100Hz	21 / 16dB / 100Hz	21 / 16dB / 100Hz	21 / 16dB / 100Hz	21 / 16dB / 100Hz	21 / 16dB / 100Hz	21 / 16dB / 100Hz	21 / 16dB / 100Hz	21 / 16dB / 100Hz
6412. LOG 008	21 / 16dB / 100Hz	21 / 16dB / 100Hz	21 / 16dB / 100Hz	21 / 16dB / 100Hz	21 / 16dB / 100Hz	21 / 16dB / 100Hz	21 / 16dB / 100Hz	21 / 16dB / 100Hz	21 / 16dB / 100Hz	21 / 16dB / 100Hz	21 / 16dB / 100Hz	21 / 16dB / 100Hz	21 / 16dB / 100Hz	21 / 16dB / 100Hz	21 / 16dB / 100Hz
6413. LOG 011	6 / 8dB / 40Hz	6 / 8dB / 40Hz	6 / 8dB / 40Hz	6 / 8dB / 40Hz	6 / 8dB / 40Hz	6 / 8dB / 40Hz	6 / 8dB / 40Hz	6 / 8dB / 40Hz	6 / 8dB / 40Hz	6 / 8dB / 40Hz	6 / 8dB / 40Hz	6 / 8dB / 40Hz	6 / 8dB / 40Hz	6 / 8dB / 40Hz	6 / 8dB / 40Hz
6416. LOG 012	30 / 20dB / 200Hz	29 / 19dB / 200Hz	27 / 18dB / 200Hz	33 / 22dB / 200Hz	32 / 21dB / 200Hz	30 / 20dB / 200Hz	30 / 20dB / 200Hz	19 / 18dB / 40Hz	42 / 20dB / 200Hz	27 / 18dB / 200Hz	29 / 19dB / 200Hz	27 / 18dB / 200Hz	27 / 18dB / 200Hz	27 / 18dB / 200Hz	30 / 20dB / 200Hz
6423. LOG 006	20 / 15dB / 100Hz	16 / 14dB / 100Hz	17 / 13dB / 100Hz	20 / 15dB / 100Hz	21 / 16dB / 100Hz	20 / 15dB / 100Hz	21 / 16dB / 100Hz	21 / 16dB / 100Hz	21 / 15dB / 150Hz	18 / 13dB / 150Hz	17 / 12dB / 150Hz	18 / 13dB / 150Hz	17 / 12dB / 150Hz	17 / 12dB / 150Hz	17 / 12dB / 150Hz



Lift und Shift:

Im Lift & Shift Modus werden die Geräuschlogger zunächst im Büro für die Aufnahmen vorbereitet. Die Einstellungen können den örtlichen Gegebenheiten angepasst werden. Im Anschluss werden die Logger im Wassernetz verteilt, wo sie für eine bestimmte Zeit verbleiben.

Die Logger messen jede Nacht den Geräuschpegel und legen die Ergebnisse im internen Speicher ab. Am nächsten Tag oder einige Tage später werden sie im Büro oder im Messwagen ausgelesen, um mit der Analyse zu beginnen.

Lift & Shift wird häufig gewählt, wenn mit einem Loggerset systematisch mehrere Gebiete zyklisch überwacht werden – von Dienstleistern zum Beispiel.



Patrouillieren:

Im Patrouillier Modus bleiben die Logger permanent im Wassernetz verteilt.

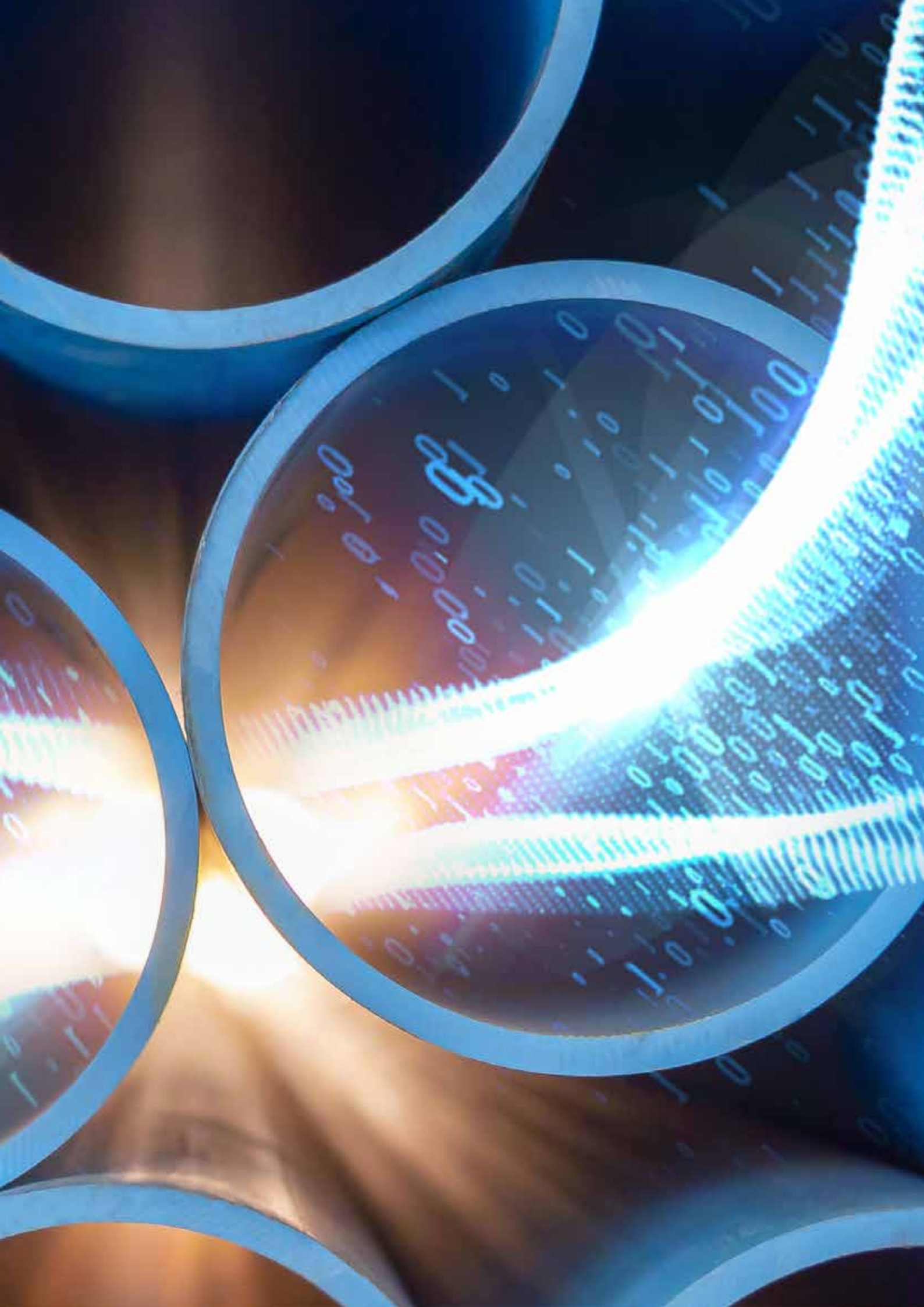
Bei Bedarf oder in gewissen Zeitabständen werden die Geräuschlogger abgefahren, um die Messdaten abzuholen.

Die Patrouillieren Methode wird gewählt, wenn aufgrund eines Ereignisses – wie einem erhöhten minimalen Nachtdurchfluss – umgehend Daten benötigt werden. So können die Daten der letzten Nächte zur genaueren Differenzanalyse herangezogen werden. Diese Daten stünden beim Lift & Shift Betrieb nicht zur Verfügung.

Patrouillieren wird hauptsächlich von Versorgern eingesetzt, die nach erhöhten Ausläufen sehr schnell reagieren möchten um die Lecklaufzeit möglichst gering zu halten.

PRESSURE AND FLOW MEASUREMENT

The background features a dark blue to black gradient with a central horizontal band of bright, glowing binary code (0s and 1s) in shades of cyan and white. This band is overlaid with several large, overlapping, semi-transparent circular patterns that resemble stylized orbits or data paths. The overall aesthetic is futuristic and technical.





Sebalog D-3

Pressure and flow rate data loggers with GPRS

- Simple installation and full remote configuration
- Compact and robust design for safety for maximum safety
- Alarms conveniently sent to smartphone
- Memory for over 1 million readings

Technical data	
Dimensions	185 mm x 115 mm
Weight	900 g
Supply	Internal battery External battery (Opt.) External permanent (Opt.)
Operating time	5 years under Standard conditions
Protection class	IP68
Operating temperature	-20 °C ... +60 °C
Internal memory	Up to 1.7 billion readings
Data transmission	868 MHz Funk 3G/2G



Real time measurement

With the function "real time measurement" and "step test" you can measure with the D-3 and observe "live" on the computer.

The most universal data logger

Thanks to its compact and robust design and the totally waterproof housing, the Sebalog D-3 data logger is very hard-wearing. It reliably informs you of the flow rate status from the pressure and flow measurements in your supply network on up to 4 channels.

It sends the latest data automatically on a day-to-day basis via 2G or 3G to your control centre or can be received, edited and displayed within the SebaCloud or the new POSEYEDON cloud platform

Always up to date with the online measurement and alarm function

Great emphasis was placed on user-friendliness with the Sebalog D-3. It supports online measurements on all channels which enables you as the user to access any saved measurement data and up-to-date readings at any time from the convenience of your smartphone.

Feel secure!

The Sebalog D-3 alarm feature can inform you immediately if there is a significant change in the pressure level or flow rate, because the current measuring data of the Sebalog D-3 are directly available online after an alarm.

You have a reliable overview of your data - no matter where you are - to know exactly where the source of the noise is located.



We will be pleased to configure the Sebalog D-3 that is suitable for your application. Choose from a wide range of options, such as 2 or 4 measuring channels, with or without GSM modem for permanent data transmission, with internal 16bar, 25bar or even 35bar pressure sensor. But you need two internal pressure sensors? No problem, contact us, we will do it!

Radio frequency 868 MHz	
Product description	Order number
2 Measurement channels	
Sebalog D-3 with 2 Channels	1003786
Sebalog D-3 with 2 Channels, Pressure: 16	1003790
Sebalog D-3 with 2 Channels, Pressure: 25	1003794
Sebalog D-3 with 2 Channels, Pressure: 35	1003798
Sebalog D-3 with 2 Channels plus GSM modem	1003770
Sebalog D-3 with 2 Channels, Pressure: 16 plus GSM modem	1003774
Sebalog D-3 with 2 Channels, Pressure: 25 plus GSM modem	1003778
Sebalog D-3 with 2 Channels, Pressure: 35 plus GSM modem	1003782

Product description	Order number
4 Measurement channels	
Sebalog D-3 with 4 Channels	1003788
Sebalog D-3 with 4 Channels, Pressure: 16	1003792
Sebalog D-3 with 4 Channels, Pressure: 25	1003796
Sebalog D-3 with 4 Channels, Pressure: 35	1003800
Sebalog D-3 with 4 Channels plus GSM modem	1003772
Sebalog D-3 with 4 Channels, Pressure: 16 plus GSM modem	1003776
Sebalog D-3 with 4 Channels, Pressure: 25 plus GSM modem	1003780
Sebalog D-3 with 4 Channels, Pressure: 35 plus GSM modem	1003784
Sebalog D-3 with 4 Channels, Pressure: 2x 25 plus GSM modem	1007432



Sebalog P-3-1 / P-3-Mini

Pressure logger especially for drinking water suppliers

- Compatible with the transmitter series
- Pressure surge recording
- Virtually indestructible housing (IP68 class)
- Fits in every shaft
- Long operating time for several years
- High-precision pressure sensor
- Low overall height
- Large data memory

Technical data	P-3-1	P-3-Mini
Dimensions	110 x 96 mm Ø	120 x 63 mm Ø
Weight	approx. 1 kg	approx. 365 g
Protection class	IP68	
Measuring range	0 ... 16 Bar (25 & 35 opt.)	
Operating temperature	-20 °C ... +60 °C	
Supply	Internal lithium battery	
Operating time	> 5 years or 10.000.000 measured values	
Memory	> 1.500.000 measured values	
Interface	868MHz Funk	
Maximum error of pressure sensor	1%	
Log interval	1 s ... 24 h	

Logger for pressure monitoring and pressure surge recording

The Sebalog P-3 pressure loggers are ideal for monitoring the pressure within drinking water supply networks. They are used for short-term measurements, for pressure monitoring in permanent installations and for the determination of pressure surges.

Due to its small size the P-3-1 pressure logger fits easily into any underground hydrant. The P-3-Mini even fits into shafts with limited installation space due to its particularly small design. Thanks to the extremely resistant housing, the P-3 pressure loggers are especially suitable for continuous operation suitable in the field.

With the Sebalog P-3-Mini it is possible to get a wireless readout without opening a shaft cover or in combination with the GSM transmitter to download data comfortably from a distance.

The setting possibilities of the Sebalog P-3-Mini are various. Its very large memory capacity allows measurements to be carried out at short intervals over extended periods of time.



Our P-3 pressure logger data can of course also be used within the POSEYEDON cloud.

Sebalog P-3-1	
Product description	Order number
Single logger	128314460
Single logger kit	128310231
Sebalog P-3-1, Sebalog RI, hydrant key adapter, PC software SebaDataView 3, magnetic adapter, USB cable 2.5m	
Starter kit	118308296
Sebalog P-3-1 (3 pcs.), Sebalog RI, Hydrant key adapter, PC Software SebaDataView 3, Magnetic adapter, transport box Sebalog P-3, USB cable 2.5m	



Sebalog P-3-Mini	
Product description	Order number
Single logger	1004701
Sebalog P-3-Mini set	1005736
Pressure Logger with radio (868 MHz), adapter for UF-Hydrant, P-3-Mini, pressure hose, magnetic adapter, PC software SebaDataView3	





Flow measurement

Portable and stationary pressure and flow meter

Portable	Stationary
UDM 300	SebaFlow
UDM 500	UDM 501



Portable ultrasonic flow meters are the ideal flow meter for long-term measurement campaigns in the field. Depending on the programmed measuring interval, it can operate autonomously for several months. Setting up a flow measurement point is done in no time and requires no interruption of operation. It then provides accurate measurement results with the highest reproducibility and without any measured value drift.

Thanks to their excellent sensitivity to very low flow velocities (Up to 0.01 m/s), they are ideally suited for monitoring drinking water networks by measuring the minimum flow rates at night.

All this makes the UDM series the ideal companion for the daily work of water utilities, hydrologists and engineering offices.



Stationary ultrasonic measuring instruments are ideally suited for metro logical monitoring of drinking water networks. The installation requires no intervention in the pipeline. This allows the simple and cost-effective installation of additional flow measuring points in an existing drinking water supply network.

In addition, it detects even the lowest flow speeds of up to 0.01 m/s with high accuracy. For drinking water suppliers, however, the precise monitoring of minimum night flow rates is an essential part of their leakage detection measures.

There is no zero drift correction procedure for our measuring instruments - because they simply do not drift.

The devices are equipped with the most robust mounting systems. Wide stainless steel straps ensure the secure and permanently stable mounting of the sensors, which are additionally protected by a robust stainless steel cover.

All this guarantees the durability of the measuring system, which is suitable for installation in the shaft as well as for installation directly in the ground.



SebaFlow-BAT

The world's first battery-powered ultrasonic flow and pressure monitoring system

- No permanent power supply necessary
- Floodable IP 68 housing variant
- Battery life of 1 year or more
- Measuring point equipment can be flexibly adapted to customer requirements



Do you also know our product brochure about the SebaFlow series?

The SebaFlow-BAT now extends and optimizes the SebaKMT device series SebaFlow. As the first manufacturer of fully comprehensive measuring systems to date, SebaKMT has had a completely self-sufficient, battery-powered ultrasonic flow measurement including data transmission in its product range since the end of 2020. Following the requirements of our customers from the areas of pipeline network planning, as well as balancing and billing, the following requirements were defined as particularly important:

The problem with the power supply

Based on a measurement interval of 5 minutes (usually sufficient for balancing), the SebaFlow-BAT, with its integrated 100 Ah lead crystal battery, achieves a runtime of at least 1 year.

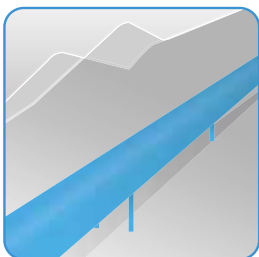
With the appropriate application, which is not aimed at the most exact balancing, the running time is extended even at 10 minute intervals to well over 1 year.

In addition to the 5 or 10 minute intervals, the SebaFlow-BAT systems can be freely parameterized, starting with 1–60 minutes. If a pressure sensor is used in parallel, the pressure measurement values are transmitted at the same interval as the flow measurement.

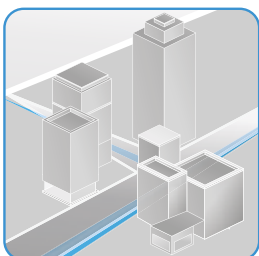
Addressed application fields – or, who actually needs that?



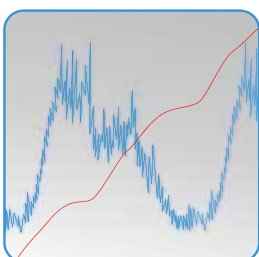
Pressure-based and flow-based leak detection on fire extinguishing lines, for example, on airport tarmacs.



Leak detection on long-distance water pipelines (trunk mains) by pressure-monitoring and flow monitoring. Extension by sensor technology, such as quality measuring probes or monitoring technology possible.



Pressure and flow measurements on urban drinking water networks. Here it complements the permanently supplied SebaFlow-CLASSIC systems in that measuring points without access to a permanent power supply can now also be used.



Periodic night minimum or night consumption measurements for leak detection.



SebaFlow-CLASSIC

Permanently powered ultrasonic flow measurement system

- Seamless data transfer
- Suitable for balancing
- Permanent power supply
- Completely remote configurable

Watch our user video (2:40 min) for further information about the technology and the installation.

Simply scan the QR code with a smartphone or visit our homepage www.sebakmt.com



Cost-effective installation without chamber construction



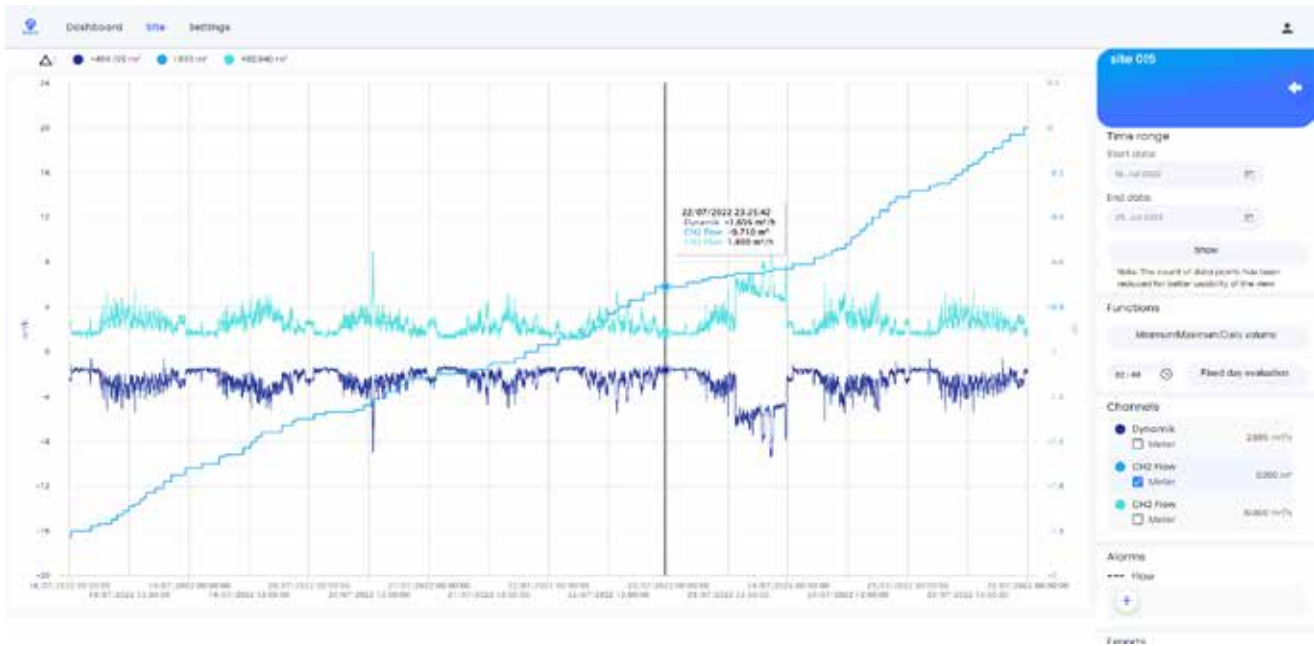
Monitoring measured data easily from the office



Fast installation without supply interruption

SebaFlow enables permanent flow and zone monitoring of a pipe network section (DMA: District Metered Area) by means of ultrasonic technology. SebaFlow CLASSIC works completely independent of material. This means that measurement or monitoring is possible on all pipe types. The existing infrastructure (for example, street lighting) can be used for power supply.

The additionally integrated rechargeable battery ensures uninterrupted operational readiness for several days. The collected data is sent to the new SebaKMT cloud platform POSEYEDON via LTE/GSM modem.



Performance comparison of the two systems

SebaFlow			NEW
Functions	CLASSIC	BAT	
Self-sufficient battery operated*	⊘	✓	
Flow measurement via ModBus**	⊘	✓	
Flow measurement via current loop	✓	✓	
Pressure monitoring in parallel (no transients)	⊘	✓	
Pulse values	✓	⊘	
CSV uploads	✓	⊘	
Remote configuration via POSEYEDON	✓	✓	
LTE 4G data transfer***	⊘	✓	
Battery low alarm	✓	✓	
Flow limit alarm	✓	✓	
Remote updates via POSEYEDON or on site	✓	✓	
Create accounting/balances in POSEYEDON	✓	✓	
Flexible power supply (batt./perm.)	⊘	✓	

*) 1 year battery life at 5 minute intervals **) Not remotely configurable! ***) NB-IoT, LoRa-WAN coming soon!

Portable Flow Measurement

UDM 300	
Product description	Order number
1-MHz Set 1	1006592
Recommended for Ø 80 ... 400 mm UDM 300 Transmitter, 1-MHz pair of sensors, LEMO Connector, Mounting system, coupling paste, coupling film, Universal charging unit, Steel brush, tape measure 2 m, Transport box	
2-MHz-Set	1006594
Recommended for Ø 25 ... 200 mm UDM 300 Transmitter, 2-MHz pair of sensors, LEMO Connector, Mounting system, coupling paste, coupling film, Universal charging unit, Steel brush, tape measure 2 m, Transport box	
0,5-MHz-Set	1006593
Recommended for Ø 400 ... 3100 mm UDM 300 Transmitter, 0.5-MHz pair of sensors, LEMO Connector, Mounting system, coupling paste, coupling film, Universal charging unit, Steel brush, tape measure 2 m, Transport box	
UDM 500	
1-MHz Set	1012795
Ultrasonic Flow Meter, Connecting device, Mains supply and charging unit, Transport box, Tube coupling paste, Double Sensor, Analysing Software	



Stationary Flow Measurement

UDM 501

Product description	Order number
UDM 501 M 12 V DC	1004842
UDM 501 M 24V DC	1007828
UDM 501 M 230V AC	1007381

UDM 501 K 12V DC 1	1006500
UDM 501 K 24V DC	1009336
UDM 501 K 230V AC	1009335

SebaFlow

Product description	Order number
SebaFlow 1MHz Sensors (recommended until approx. DN400)	1005714
SebaFlow 500kHz Sensors (recommended from approx. DN400)	1006499
Extension sensor cable	1006993



1





CORRELATION

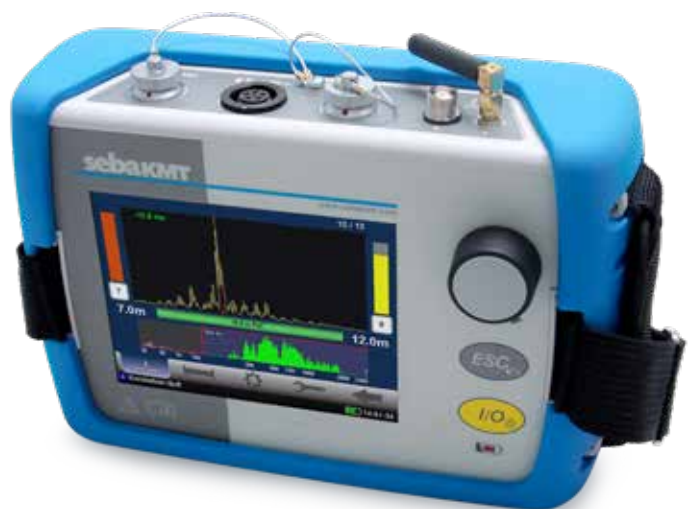




Correlator Series

Correlux Hybrid Correlator for online and offline measurements

- Online and offline correlation
- Long operating time and inductive sensor charging
- Point location using multi-sensors or ground microphone
- Perfect for plastic and transport pipes
- Multi-correlation without pipe parameter input



Technical data	
Dimensions	90 x 185 x 60 mm
Weight	400 g
Supply	3.6 V Lithium Battery
Operating time	> 10 h
Operating temperature	-10 °C ... +50°C
Storage temperature	-25 °C ... +70°C
Display	LCD, Value 0-99
Memory	Last measured value

Easiest Handling

Simplest handling with colour touch screen. Furthermore the housing is of the Correlux C-3 light and handy.

Online and offline Correlation

The Correlux C-3 is suitable for both immediate measurement (online) and night measurement (offline). If the measuring point is easily accessible and is not in a danger zone, the online measurement is used for Stretchers. Here the so-called power transmitters (transmitter & microphone) are exposed. These transmit the live signal directly to the correlator and you get the result immediately.

However, if the measuring point is located in an area that is difficult to access or if there is too much interference noise, then you have the possibility with the power transmitters or with up to eight Multi-sensors to create a to perform offline measurement.

Correlux C-3			
Product description	Standard	Pro	ProPlus
C-3 Correlator	✓	✓	✓
2 Power transmitter (A/B)	✓	✓	✓
Multi-sensors	✗	3 Pieces	8 Pieces
Headphones	✓	✓	✓
Case with charging function	✓	✓	✓
Charging unit / Car Charging unit	✓	✓	✓
PC-Software	✓	✓	✓



Correlux C-30			
Product description	Standard	Pro	ProPlus
LOG RI	✓	✓	✓
Multi-sensors	3 Pieces	5 Pieces	8 Pieces
Case with charging function	✓	✓	✓
Charging unit / Car-Charging unit	✓	✓	✓



Correlator series



Correlux C-3	
Product description	Order number
C-3 Standard Set	1006550
Correlator, COR Power Transmitter (2 pcs.), Case (Basis), Stereo Headphones, Active universal microphone (2 pcs.), Charging unit, Car charging adapter 3.5 m, Extension rod for PAM T-2/U (2 pcs.), Nylon braided cord 3 mm blue 2 m (2 pcs.), Connection cable Sebalog D (Output USB), CorreluxView PC-Software	

C-3 Pro Set	1006551
Correlator, COR Power Transmitter (2 pcs.), Active universal microphone (2 pcs.) Correlux Multi-sensor (3 pcs.), Case, Charging unit, Car charging adapter, Stereo Headphones, Extension rod for PAM T-2/U (2 pcs.), Nylon braided cord (2 pcs.), Magnetic angled adaptor (2 pcs.), Connection cable Sebalog D (Output USB), CorreluxView PC-Software, Label set, Mounting kit	

C-3 ProPlus Set	1006552
Correlator, COR Power Transmitter (2 pcs.), Active universal microphone (2 pcs.), Correlux Multi-sensor (8 pcs.), Case for COR C-3 (Basis), Case, Charging unit (2 pcs.), Car charging adapter 3,5m (2 pcs.), Stereo Headphones, Nylon braided cord (8 pcs.), Extension rod for PAM T-2/U (2 pcs.), Tripod adapter (8 pcs.), Label set, Magnetic angle adapter (8 pcs.), Connection cable (Output USB), CorreluxView PC-Software, Mounting kit	

Correlux C-3 Extension set Standard → Pro	1007804
3 Charging station + 3x MS-3 Multi-sensors	

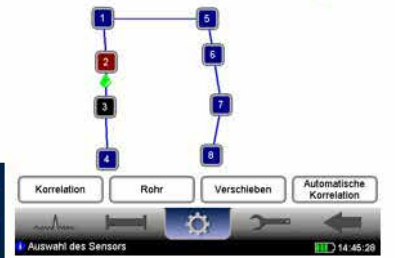
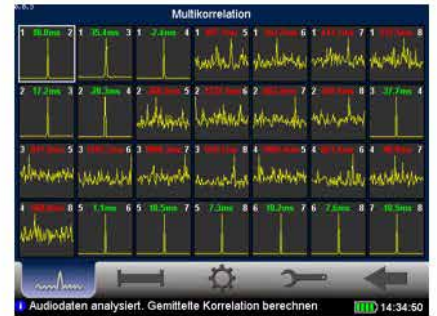
Correlux C-3 Extension set Standard → ProPlus	1007807
Case incl. 8x MS-3 Multi-sensors	

Correlux C-3 Extension set Pro → ProPlus	1007810
Case incl. 5x MS-3 Multi-sensors	

Optional	
Charging unit CPK 3/CMK 3	1006646
Car charging adapter 3.5 m	810000006
Charging station for COR MS-3 (3 pcs.)	2005511

PAM HYDRO-3 Set	
Product description	Order number
PAM HYDRO-3 Set	1007009
Piezo hydrophone (2 pcs.), Adapter (2 pcs.), Venting hose (2 pcs.), Connection cable (2 pcs.), Storz coupler (size C) female thread G1 1.5" (2 pcs.), GEKA coupler (2 pcs.), Transport box	





Multipoint correlator



Correlux C-30	
Product description	Order number
C-30 Standard Set	1011112
Case, Charging unit, Radio Interface (868MHz), Correlux Multi-sensor (3 pcs.), Tripod adapter (3 pcs.), Nylon braided cord (3 pcs.), Magnetic angled adaptor (3 pcs.), Label set , Mounting kit	



C-30 Pro Set	1011113
Case, Charging unit, Label set, Radio Interface (868MHz), Correlux Multi-sensor (5 pcs.), Tripod adapter (5 pcs.), Nylon braided cord (5 pcs.), Magnetic angled adaptor (5 pcs.), Mounting kit for COR MWA (5 pcs.),	



C-30 ProPlus Set	1011114
Case, Charging unit, Radio Interface (868MHz), Correlux Multi-sensor (8 pcs.), Tripod adapter (8 pcs.), Nylon braided cord (8 pcs.), Magnetic angled adaptor (8 pcs.), Label set, Mounting kit (8 pcs.)	



Acoustic series

Portable leak detector HL 50-BT

- Simple operation
- Frequency filters for various applications
- Always ready for use due to rechargeable battery
- External ground microphones connectible for professional leak detection
- With integrated sensor and Bluetooth® wireless headphones

Technical data	HL 50-BT
Dimensions	90 x 185 x 60 mm
Weight	400 g
Supply	3.6 V Lithium Battery
Operating time	> 10 h
Operating temperature	-10 °C ... +50°C
Storage temperature	-25 °C ... +70°C
Display	LCD, Value 0-99
Memory	Last measured value



With integrated sensor and Bluetooth® headphones

Thanks to the special ergonomic shape, the HL 50-BT held in one hand during use. For the operation of the HL 50-BT only four function keys necessary (selection, filter, mute, volume) , which can be comfortably played with the thumb are available.

In the standard version, the HL 50-BT offers an integrated sensor as well as a Bluetooth® radio headphone. There are no annoying connection cables. Thus the HL 50-BT offers optimum freedom of movement and is for the tapping of slides and hydrants, but also suitable for fittings in buildings.

The measured sound level is simultaneously displayed numerically and graphically as bars on a large LCD display. The currently set filter range is also shown. When ending a measurement, the last measured sound level is marked in the bar.

For maximum flexibility and professional applications, the HL 50-BT can be equipped with three different external microphones.



HL 50-BT	
Product description	Order number
HL 50-BT Set	1009207
HL 50-BT, Headphones, USB charging unit, Probe tip, Extension rod, Magnetic adapter, Slide adapter 20/42 mm, Power adapter EU/US, Transport box	



Acoustic Series

Hear and see leaks with the HL 7000

- Intuitive operation with clear touch colour display
- Always ready for use by powerful lithium-ion batteries
- Integrated GPS receiver
- Environmental/noise reduction
- Frequency Analysis
- Option: Connection of a tracer gas sensor



Technical data	HL 7000
Dimensions	200 x 80 x 650 mm
Weight (without sensor)	700 g
Supply	3.6 V Lithium Battery
Operating time	> 10 h
Operating temperature	-20 °C ... +60 °C
Storage temperature	-25 °C ... +70 °C



Comfortable applications

The HL 7000 floor sound system offers you a wide range of possibilities thanks to its variable construction and automatic 360° sensor-recording various possibilities for locating leaks. Due to the powerful lithium-ion batteries work assignments with more than 10 hours duration are no problem.

The Bluetooth®-enabled, wind-protected piezo floor microphone with integrated pre-amplification displays very low leakage frequencies on soft materials such as PVC or PE just as clearly as high frequencies on steel or cast iron pipes.

In the robust loading and transport box, each part of the HL 7000 equipment has its place. All chargeable components such as the control unit, the sensor rod and the Bluetooth® headphones can be charged together in the case thanks to the pre-installed charging cables.

In the event of pipe damage, the water flowing out of the case causes two different noises that spread out in different ways. The Hydrolux HL 7000 makes these two noises visible and audible for you. In the centre of these applications is an intuitive control panel. With its high-resolution 4.3" touch colour display they present all relevant menu items and measurement data in an easily understandable way. The menu navigation is child's play. Extremely light in weight (600 grams) and yet robust, the control unit can be used: worn on a belt, fixed to the sensor rod or simply clipped to trousers or belt attached. Wear the device exactly as you wish or as the situation requires. This ensures fatigue-free working.



Work completely wireless thanks to Bluetooth®.

Thanks to integrated Bluetooth® technology there are no cables to get in the way more between the control unit, headphones and the respective sensors. Noise from wind and cable contact is a thing of the past on. This allows you to concentrate fully on the leakage noise.



Acoustic Series

Hydrolux	
Product description	Order number
HL 7000 Pro	1011016
HL 7000, Headphones, Carrying handle, PAM W-7, Charging unit, Tripod adapter, Software HydroluxView, belt clip, Transport box, Bracket and Mounting kit	



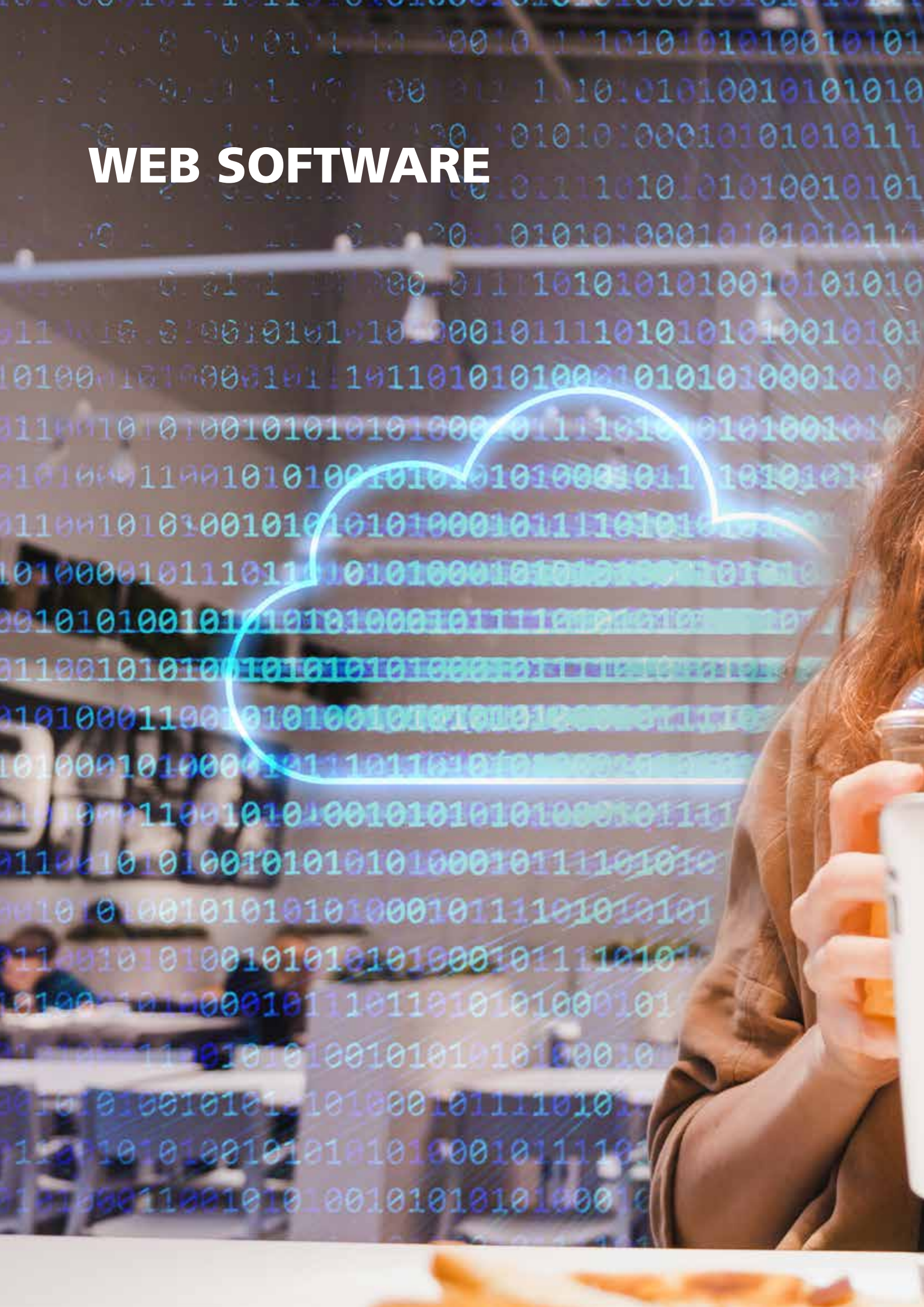
*Image contains optional accessories (PAM CORR-2, PAM H-7 & step piece)

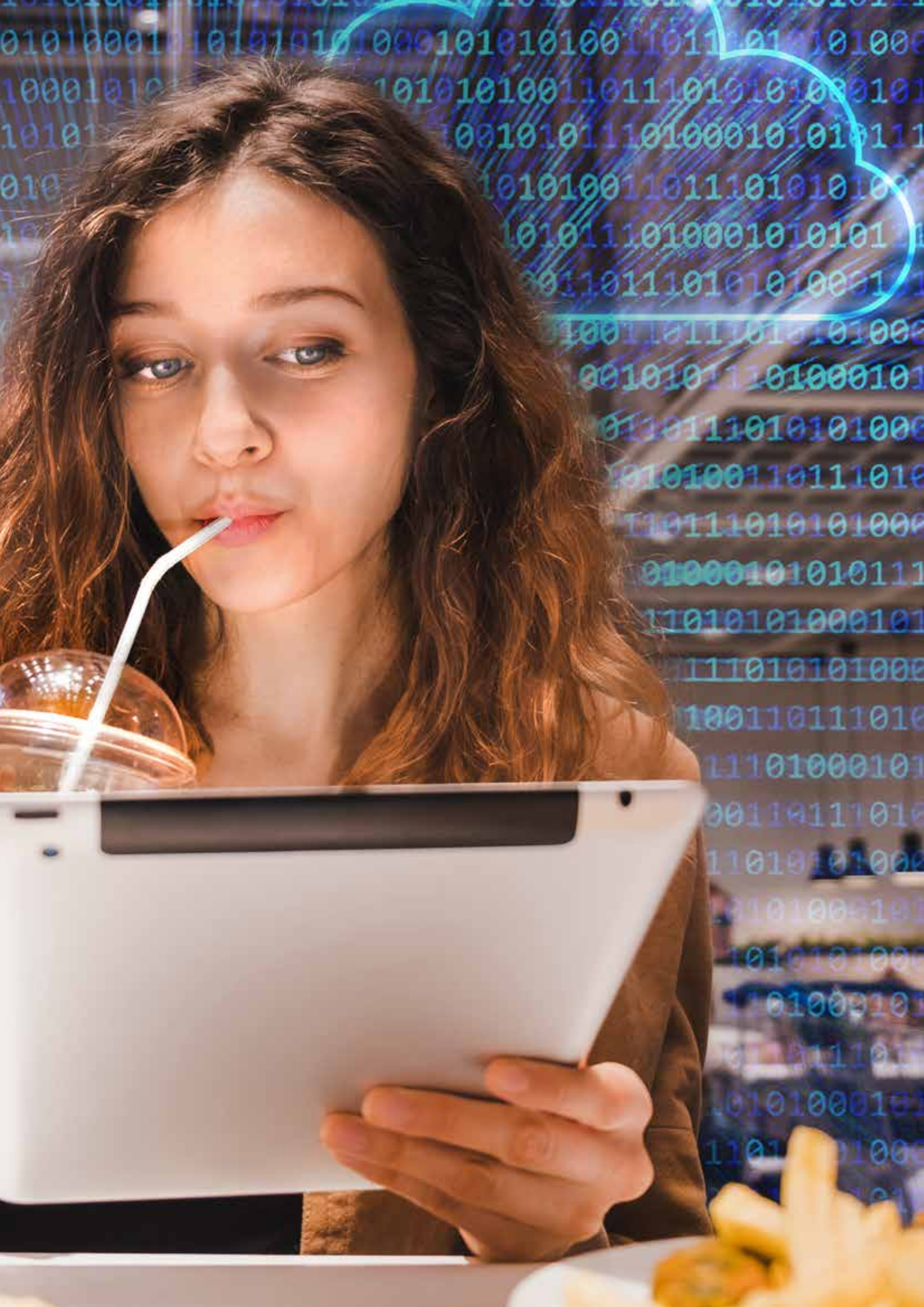
Correlux	
Product description	Order number
HL 700	1011529
HL 7000 receiver, Bluetooth headphones, PAM CORR-2, charger (int.), PC connection cable, belt clip, carrying case, multitool	





WEB SOFTWARE







POSEYEDON

ALL data under control
anytime and anywhere

- All live data and evaluations under control anytime and anywhere
- Easy-to-understand and clear user interface
- Reliable, fast, secure and energy-efficient data transmission
- Automatic online correlation
- Continuous further development (e.g. pattern recognition)



QR-Code scannen und
das POSEYEDON
Erklär-Video ansehen

Leak-Lines

K.I. anhand von Mustererkennung?

Eine neue Algorithmik die mit dem Start des SmartEAR nun Einzug hält – unsere Antwort auf den Wunsch nach Fernkorrelation

Unser Leak-Lines-Algorithmus hat bereits bestätigte Lecks errechnet, muss aber noch weiter lernen. Jeder weitere installierte SmartEAR hilft uns also dabei die Präzision der Lecklokalisierung zu verbessern.

Dieser Algorithmus ist einer der priorisierten Funktionen für Poseydon, und soll im Laufe des Jahres 2022 eingeführt werden





POSEYEDON

Keep an eye on your water network



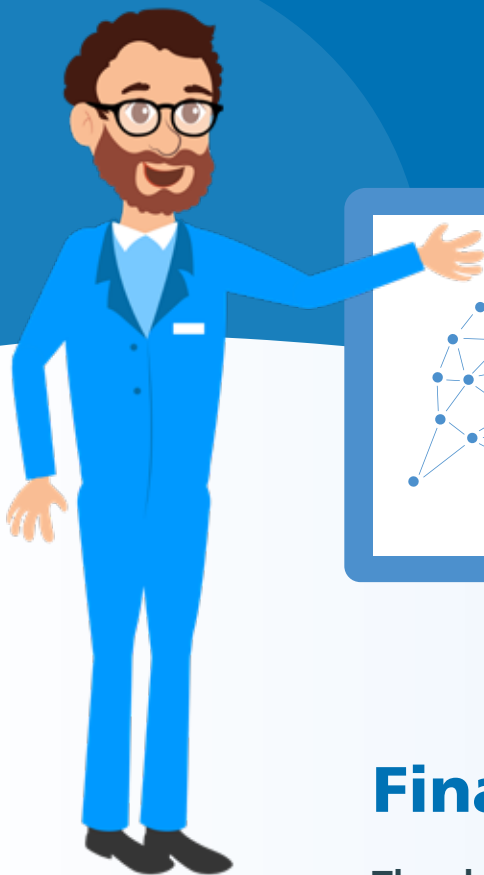
FLOW



ACOUSTICS &
FREQUENCY



PRESSURE &
TEMPERATURE



Finally!

The cloud solution for leak detection and Monitoring, which covers **all** your tasks in water management can support.

- All live data and evaluations under control anytime and anywhere
- Easy to understand and clear user interface
- Stable, fast, secure and energy-efficient data transmission
- Automatic Online Correlation
- Continuous development of functions (e.g. pattern recognition)



Dashboard

→ Heatmap, leakages, evaluation

Network Manager

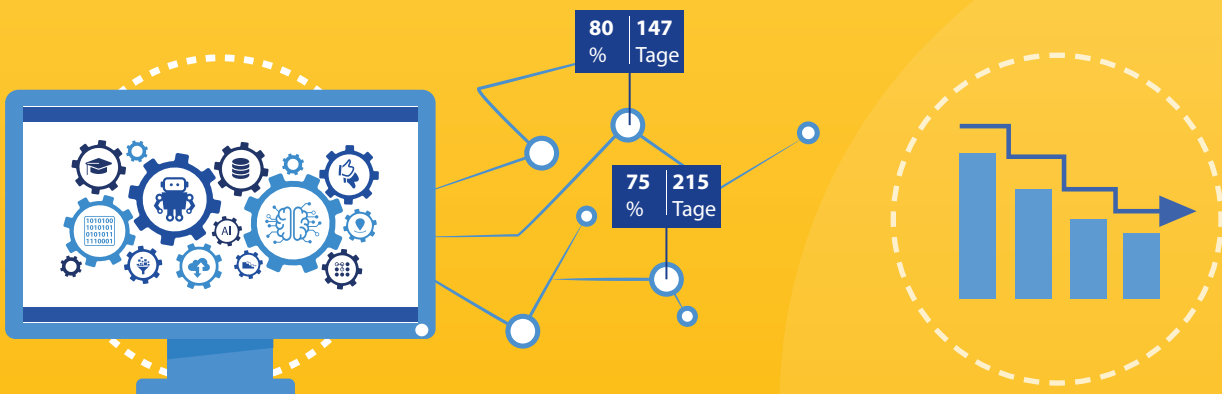
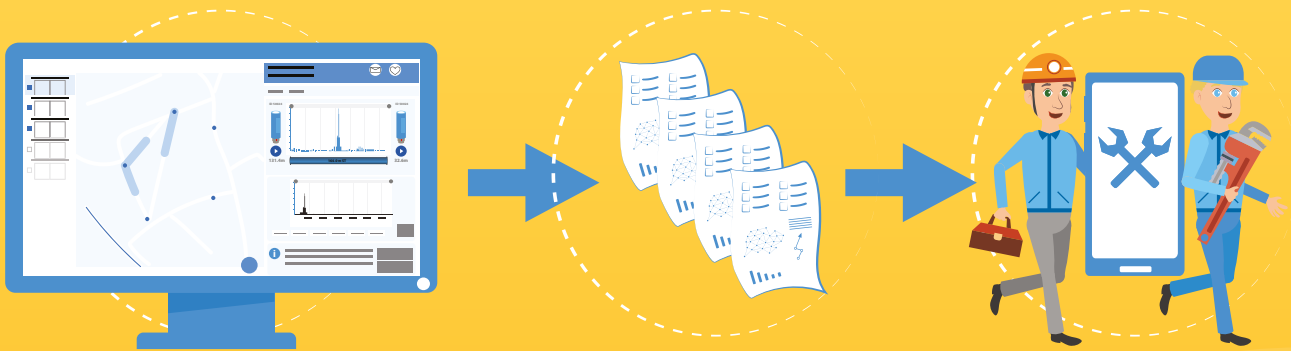
→ Connection to GIS system

Ticket system

→ Efficient service management

Reporting system

→ individually configurable reports



**POSEYEDON –
for less water loss!
www.poseyedon.com**



PIPE LOCATION







Ferrolux



Leitungsortung und Trassierung

- Kabelkompass zur Bestimmung der Leitungslage
- Exzellente Ergebnisse auch bei Kabelhäufungen
- Muffenortung mit Minimum-Trübungsfunktion
- Optional: Mantelfehlerortung (RXNT)



Technische Daten	HL 7000
Dimensionen	200 x 80 x 650 mm
Gewicht (ohne Sensor)	700 g
Stromversorgung	3,6 V Lithium-Akku
Betriebsdauer	> 10 Std.
Betriebstemperatur	-20 °C ... +60°C
Lagertemperatur	-25 °C ... +70°C

Ortet – einfach – alles!

Der Ferrolux® RX Audiofrequenzempfänger vereinigt mit seinen Ortungsverfahren SuperMax, SignalSelect (Identifizierung der Signalflussrichtung) und den bewährten Audiofrequenzverfahren viele Funktionen zur präzisen Leitungsortung und Kabelfehlernachortung in einem Gerät.

Damit liefert der Präzisionsempfänger auch in Bereichen mit dicht nebeneinander verlaufenden Leitungen eindeutige Ergebnisse.

Besonders lange Einsätze gelingen spielend. Ein extrem leichtes Gewicht sowie eine übersichtliche und intuitive Darstellung der Messergebnisse helfen dabei.

Zusammen mit Audiofrequenzgeneratoren der Reihe Ferrolux® FLG können sogar Abzweigmuffen und Kabelfehler (z.B. Aderschlüsse) punktgenau lokalisiert werden. Die kontinuierliche Anzeige der Verlegetiefe und des Signalstroms, sowie unterstützende Automatikfunktionen (z.B. Minimum-Trübungsfunktion) machen dies möglich.

GPS-Koordinaten können über eine Bluetooth®-Schnittstelle integriert werden. Alle Messdaten können sowohl am sonnenlichttauglichen Display als auch am PC grafisch dargestellt werden.

Besonderheiten

- Kontinuierliche Anzeige der Verlegetiefe und Stromstärke
- Stromrichtungserkennung und Signalgüte
- Frequenzscan
- Spezieller Sondenortungsmodus
- Programmierbare Funktionstasten
- Nur 900 Gramm Sensorgewicht
- Schnelle Menüführung mit easyGO



Location technology

Utility locating system	
Product description	Order number
Mains adapter to transmit onto live LV lines to 480 V	220-2832
Induction clamp 5 inch (12.7 cm)	220-2829
Induction clamp 7 inch (17.8 cm)	220-2830
Broadband clamp 3 inch (7.6 cm) from 263 Hz to 5 kHz	222-2831
Fault probe (A-frame for sheath fault location)	220-2834
Bag for Fault Probe	222-4857
Stethoscope (Cable selection sensor with flex-rod) for cable identification	220-2835
EML Boot - Add-on marker locator (Europe)	220-2833
Dual direct connect leads for connecting two cables simultaneously, only for PLUS models.	222-4863
MFL TX 12 V Adapter for vehicle electrical system	222-3808
Power supply adapter 220-240V. For mains operation in combination with the 12V adapter	9003 5390

Ordering Information				
	Transmitter	Order No.	Receiver (suitable for Transmitter)	Bag (for Receiver & Transmitter)
5 Watt	CARLOC 5 W	102-1766	102-1765	222-4109
	CARLOC 5 W with Li-Ion Set	1013366		
	CARLOC PLUS 5 W	102-1767	102-1764	
	CARLOC PLUS 5 W with Li-Ion Set	1013367		
12 Watt	CARLOC 12 W	102-1768	102-1765	
	CARLOC 12 W with Li-Ion Set	1013368		
	CARLOC PLUS 12 W	102-1769	102-1764	
	CARLOC PLUS 12 W with Li-Ion Set	1013369		



Locating cables and pipelines

Product description	Order number
Easyloc Standard-System complete	890005617-S
Receiver Easyloc RX Standard, Transmitter Easyloc TX, Grounding set, Ground stake, Carrying bag, Manual	
Easyloc Plus-System	890016224-S
Receiver Easyloc RX Plus, Transmitter Easyloc TX Plus, Grounding set, Carrying bag, Manual	
Easyloc RX Basic	890010236
Receiver set with Manual	
Easyloc RX Standard	890003780
Receiver set with Manual	
Easyloc RX Plus	890016177
Receiver set with Manual	
Easyloc TX Basic / Standard Transmitter set	890005586
with Grounding set, Ground stake & Manual	
Easyloc TX Plus Transmitter set	890016200
with Grounding set, Ground stake & Manual	
Easyloc RX Cam	890010258
Receiver with Manual	



GOK 50-R

Product description	Order number
Rohrspecht RSP 3	813360
Control unit with battery, carrying strap, pulse generator, charger and device case	

Acoustic detection of non-metallic pipes

Product description	Order number
Pipe Pecker RSP 3	813360
Control unit with Battery, Shoulder strap, Pulse generator, Charging unit and device case	



WATER TEST VAN







SebaKMT Water test van

Always and everywhere ready for use

- Data can be analysed on site
- All devices are safely stowed away and ready to hand
- Devices can be charged on the way
- Separate comfortable office area
- Equipment room with high-quality Aluminium shelves for equipment
- All pipe network data can be retrieved at any time, whether in the office or on the road

Optional

- Built-in water circuit optionally also with booster pump
- Additional supply for equipment and the entire office area

General performance characteristics

The SebaKMT water measuring van has three separate areas: the driver's cab, the office area (middle area) and the equipment room (rear section).

A partition wall separates the office area of the test van from the driver's cab and the equipment room.

Equipped with an L-shaped desk and a swivel chair anchored in the floor, the office area offers the comfort of a conventional office and optimal working conditions for work on the road. Heat-insulating walls and ceilings provide an improved working environment.

The floor covering is particularly robust and highly resistant. The built-in aluminium shelves provide space for everything that is needed on the move.



**Get an offer now for your
personal water test van.**

**By telephone: +49(0)9544 - 680 or
by email to sales@sebakmt.com**

Leak detection in the 21st century

Optimisation of work efficiency

All devices/instruments are professionally/goodly stored in the measuring trolley and so always ready to use when needed. The devices are in their intended place during transport well and the risk of losing small accessories is minimized.

On-site data analysis

A decisive advantage of the water measuring trolley lies in Possibility to analyse data directly on site. The air-conditioned office area of the car offers all conveniences of a mobile offices and has enough space to conveniently study the piping plans, evaluate the measurement data and plan the next steps.

In addition, reflective elements and rotating beacons provide a safe environment for data evaluation, especially at night or on busy roads.

Equipment room

The entire equipment compartment is made of washable and robust material. High-quality aluminium shelves offer sufficient space for all the leak detection equipment. Thanks to the mains sockets, the instruments can be charged immediately in the equipment room.



Optional equipment options

Built-in water circuit

The water measuring trolley has a built-in water circuit with flow and pressure measuring device. The water from the mains can be passed through this circuit. This allows both pressure and also measure flow rate on site. The total measured pressure and flow data are stored in a data logger, which can be read from the mobile office via radio communication.

Built-in water circuit with booster pump

In areas of the water network where pressure is low, leak detection is difficult. This problem can be solved by a water circuit with built-in booster pump, which is able to temporarily increase the pressure in the network. This causes leakage noises to become louder and e.g. Correlators and floor microphones are easier to locate.

Energy Management System

The energy management system is particularly recommended when the water circuit is installed. It ensures that longer pressure and flow measurements can be carried out on site without supply problems. The batteries of the system are automatically charged while driving and can be supply all leak detection devices - the devices in the office area and the lamps in the car - with electricity.

Power generator

If the built-in water circuit is equipped with a booster pump, an underfloor generator necessary for the supply. For trolleys without booster pump a conventional built-in generator is sufficient.

SmartEAR	
Product description	Order number
Transport box complete, SmartEAR	2014649
Safety wire rope complete for SmartEAR	2015049
Magnetic holder ring set, SmartEAR	2015069
Magnet adapter 32/14 220N, neodymium magnet	820015167
Rod antenna LTE NB-IoT SMA-M 698-960MHz	90035958
Antenna extension SMA 0.5m	2015410
Antenna extension SMA 1.0m	2015409
LOG GT-3-1-AV, antenna extension 3m	2011249
SAFT lithium cell 3.6 V / LSH-20 size D	820007318

Noise Logger Networks	
Single Logger N-3	820019682
Single Logger N-3-TNC	820025700

N-3 Logger-Sets	
15x N-3 Logger incl. 5x Angle adapter incl. transport box	118304295

N-3-TNC Logger-Sets	
15x N-3 Logger incl. 5x Angle adapter incl. transport box	118304319

LOG N-3	
Neodymium magnet for external logger antenna (LOG EA 58)	820015167
Antenna with magnetic base	122010060
Angle adapter with embedded magnet	118303355
Foam insert on top for LOG N3	820026183
Sebalog N-3 foam transport box	128315009

Commander-3-1 complete set	
Commander 868MHz, carrying case, headphones (wired), Car charger cable, antenna with magnetic base, charger, PC connection cable, GPS module	118303791

Commander-3-1	
GPS module	118303791
Antenna extension	820005315
Antenna 868 MHz TNC connection	122010014
Slide adapter 20 mm	810000357
Slide adapter 42 mm	810000358
Torsion spring	820000929
Angle adapter with embedded magnet	118303355
Pipe adapter for non-magnetic pipes (20-25mm)	820001658
Nylon braided cord	304035025

Pressure and Flow meters	
Product description	Order number
Sealog D-3	
VK 75, Connection cable for Sensors (Buchse IN)	820012449
VK 76, Connection cable Sealog D	820012450
VK 78, Extension cable (3m)	118308294
VK 78, Extension cable (5m)	90027986
VK 78, Extension cable (10m)	90027987
VK 78, Extension cable (15m)	90027988
VK 84, Connection cable Sealog D-UDM 300	820018168
VK 86, Connection box	820019262
VK 88, Connection cable Sealog D-LOG D-EB	820020384
LOG RI, Radio interface	820025783
LOG RI+, Radio interface with extended range	1003877
LOG D-EB, External Battery	820020355
LG LOG D-EB, Charging unit	820021240
GSM-Antenna LOG D-3	820020888
GSM-Antenna LOG D-3	820020888
GSM-Antenna, Step-Test	820020888
Hydraulic hose (2 m)	118304220
Sealog P-3 / P-3-Mini	
LOG TB-290, Transport box N-3	118306257
Foam inlay for TB-240 Sealog P-3	118307631
Adapter for UF-Hydrant, LOG P-3-mini	2007329
Adapter (VA) f. UF-Hydrant, LOG P-3-mini	2010272
Hydrant key adapter	108301741
Magnet adapter	820015167
Storz coupler Size B, 2" thread, PN 16	820026998
GEKA coupler 1.5" thread (external)	650010117
Reducing sleeve from 2" female threat to 1.5", Alu	820026184
Adapter for underground hydrants DN80 Rd 85x1/6" IG Alu	820026168
USB cable 2.5 m	820004240
Pressure hose, max. 35 bar, 0,54m (NW 5 quick fit to quick fit)	128310977
Pressure hose, max. 35 bar, 2 m (NW 5 quick fit to 1/4" external thread)	118304220

ACCESSORIES

Flow measurement	
Product description	Order number
UDM 300	
Transmitter L (Lemo Connector)	1009281
1 MHz Sensor L (Lemo Connector)	1008790
2 MHz Sensor L (Lemo Connector)	1008791
0.5 MHz Sensor L (Lemo Connector)	1008792
0.2 MHz Sensor (UDM 500)	1012431
Chain 1 m	1008793
Chain 2 m	1008795
External Battery	1008637
Transmitter (TrimTrio Connector)	1006572
2 MHz Sensor (TrimTrio Connector)	1006573
1 MHz Sensor (TrimTrio Connector)	1006574
0.5 MHz Sensor (TrimTrio Connector)	1006575
Read out cable	1006576
Coupling paste 100 ml (-30°C...200°C)	1007238
Connection cable Sebalog D	820018168
Set of textile tensioning straps 5 m	1007480
Typ VT-K Set of permanent coupling film (for K-Sensors)	1007396
Typ VT-M Set of permanent coupling film (for M-Sensors)	1007397
Ultrasonic measuring device for wall thickness	118304435
Sensor mounting rack 2 pcs. – for 1 & 2 MHz Sensors	1006399
Sensor mounting rack 2 pcs. – for 500 kHz Sensors	1010527
UDM 500	
0.2 MHz Sensor	1012431
0.5 MHz Sensor	1012796
4 MHz Sensor	810003528
Service-Adapter (terminal block + Socket)	1012797
Textile tensioning straps (5 mm x 25 mm)	1007480
Textile tensioning straps (7 mm x 25 mm)	1007481
VCM, Sensor mounting rack (for 2x 1 & 2 MHz Sensors)	1006399
VCK, Sensor mounting rack (for 2x 500 kHz Sensors)	1010527
UDM 501 / SebaFlow	
GSM Amplifier Antenna 5 m cabel	90028107
Antenna Adapter cable SMA-ODU, 0.8 m	2010316
Antenna-Extension cable 3 m	118308294
Antenna-Extension cable 5 m	90027986
Antenna-Extension cable 10 m	90027987
Antenna-Extension cable 15 m	90027988

ACCESSORIES

Correlation	
Product description	Order number
Correlux C-3	
VK 98, PAM CORR (2.5 m)	108301284
VK 100, Connection cable C-3-W2	118302742
LOG GPS, GPS module C-3 / CDR-3	118303791
Correlux Multi-sensor	1004815
AD-S-20, Slide adapter 20mm	810000357
AD-S-42, Slide adapter 42mm	810000358
TX A/B High temperature sensor -130°C (2 pcs. needed)	1007108
Tripod adapter for Sebalog Corr	128309877
Nylon braided cord 3mm (2 m)	304035025
Magnetic angled adaptor	2007392
Label set COR C-3 (1 - 8)	2007321
Mounting kit	2007393
Charging unit for CPK 3 /CMK 3	1006646
Car charging adapter 3.5m	810000006
Charging station for COR MS-3	2005511

PAM HYDRO-3 Set	1007009
PAM HYDRO-3, Piezo hydrophone, Adapter UF Hydrant, ES HYDRO-2, Venting hose, VK 114, Connection cable, Storz coupler Gr. C female thread G1 1.5", GEKA coupler with female thread G1 1.5", STK 2, Transport box	

Acoustic Series	
Product description	Order number
HL 7000	
PAM T-7, Feeler rod microphone	1010396
VST T-7, Extension rod	90029964
PAM T-7/ PAM T-3, Foot traverse	820018811
PAM h-, Tracer Gas Sensor	1010671
PAM CORR (2.5m), Universal microphone	820019615
PAM CORR (1.5m), Universal microphone	1012410
HL 50-BT	
PAM B-2 Set PAM B-2 + Tripod adapter	1009209
PAM W-2 Set PAM W-2, Connection cable, Carrying handle, Tripod Adapter	1009211

International sales

NORTH EUROPE (DK, FI, NO, SE)

DIEGO ESCUTIA
Sales Manager Water Division

Mobil: +49 175 587 34 87
escutia.d@sebakmt.com

SOUTH EUROPE

PASCAL GRUNER
Sales Director Water Division

Mobil: +49 175 936 15 54
gruner.p@sebakmt.com

AFRICA / MIDDLE EAST / SOUTHEAST ASIA

PASCAL GRUNER
Sales Director Water Division

Mobil: +49 175 936 15 54
gruner.p@sebakmt.com

SOUTH AMERICA

DIEGO ESCUTIA
Sales Manager Water Division

Mobil: +49 175 587 34 87
escutia.d@sebakmt.com

GERMANY

SebaKMT · Dr.-Herbert-lann-Str. 6 · D-96148 Baunach
Tel. +49 (9544) - 680 · Fax +49 (9544) - 2273
sales@sebakmt.com

www.sebakmt.com

Technical changes reserved. [WATER-CATALOGUE_EN_V02b.pdf](#)

'SebaKMT' is a registered trademark. Copyright © 2022

sebaKMT
by Megger®