

### Systemanforderungen

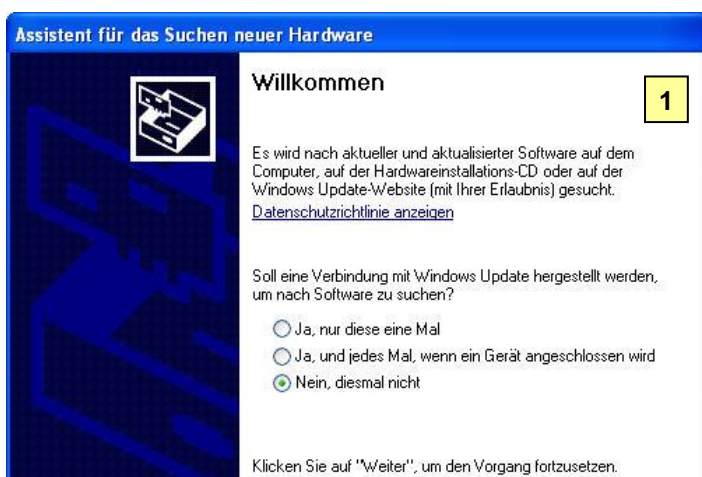
PC mit Intel oder AMD Prozessor, Windows XP/Vista/7/8/8.1, freie USB Schnittstelle

### Allgemeine Hinweise

- Beenden Sie alle offenen Programme, bevor Sie mit der Installation beginnen.
- Für die Installation unter Windows XP/Vista/7/8/8.1 werden Administratorrechte benötigt.

### Treiber für MJÖLNER Win installieren

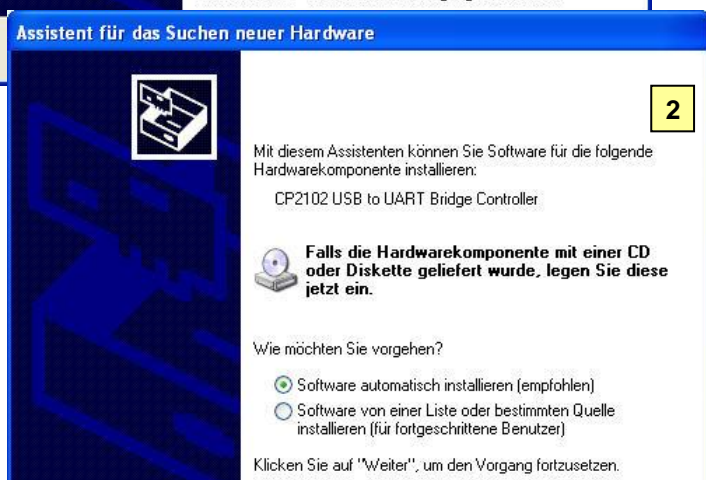
[PC mit Windows XP]



Mjölner an eine freie USB Schnittstelle anschliessen. Windows erkennt die neue Hardware.

CD-ROM mit USB Treiber einlegen.

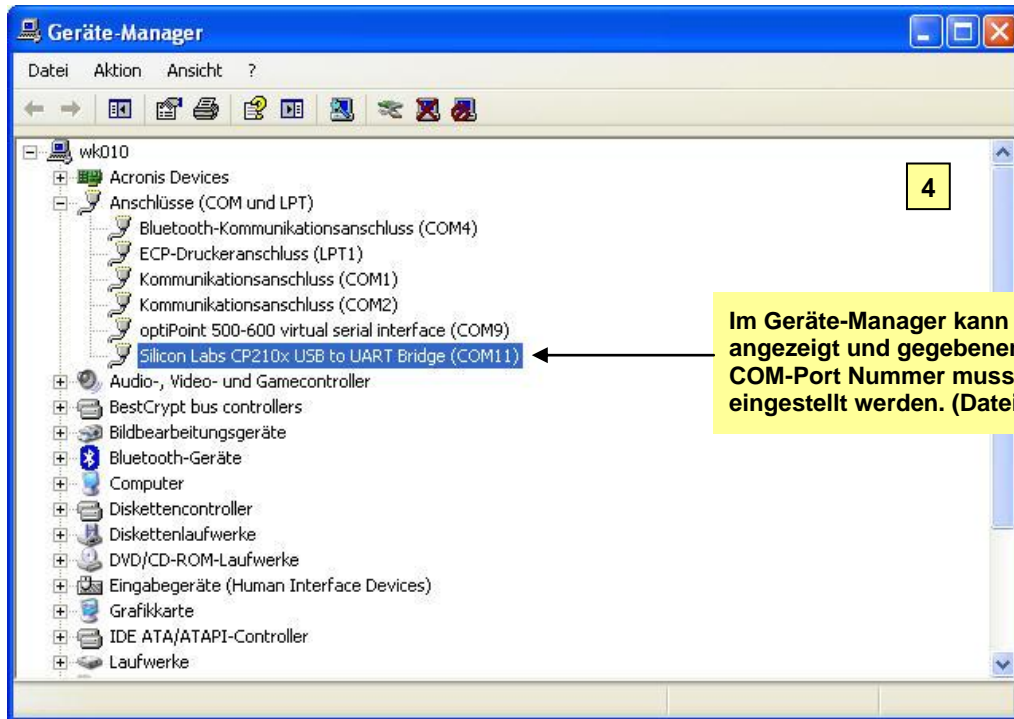
"Nein, diesmal nicht" auswählen  
Weiter >



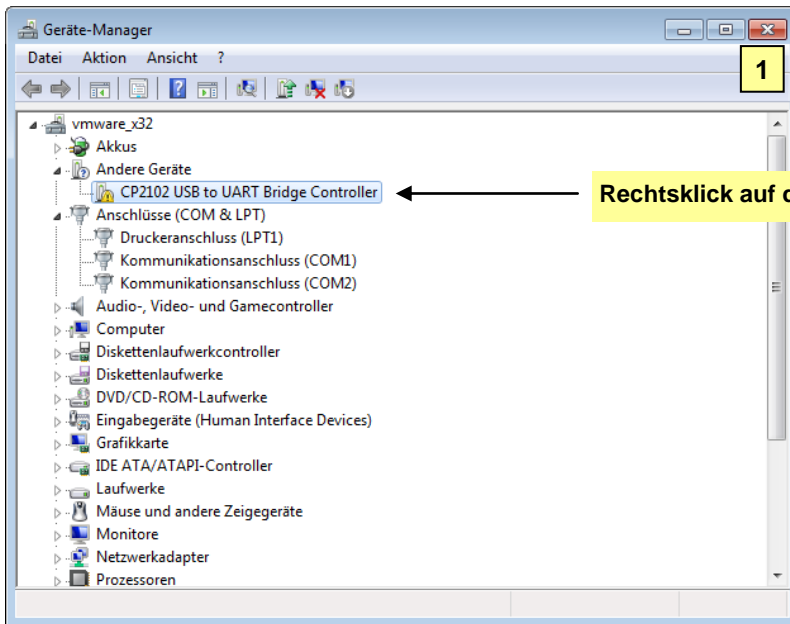
"Software automatisch installieren" auswählen  
Weiter >



Fertig stellen



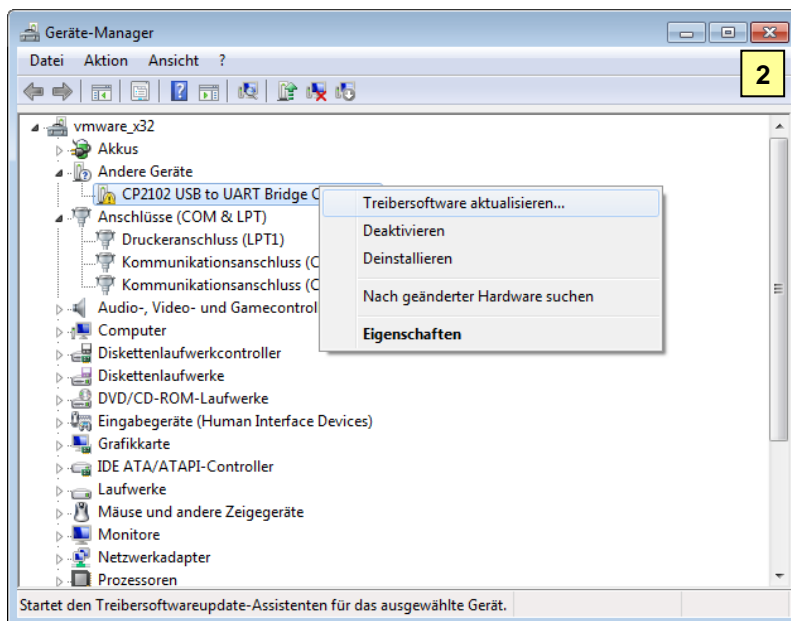
Im Geräte-Manager kann der neu installierte COM-Port angezeigt und gegebenenfalls geändert werden. Die COM-Port Nummer muss in der *Mjölner-Win* Software eingestellt werden. (Datei/Optionen).



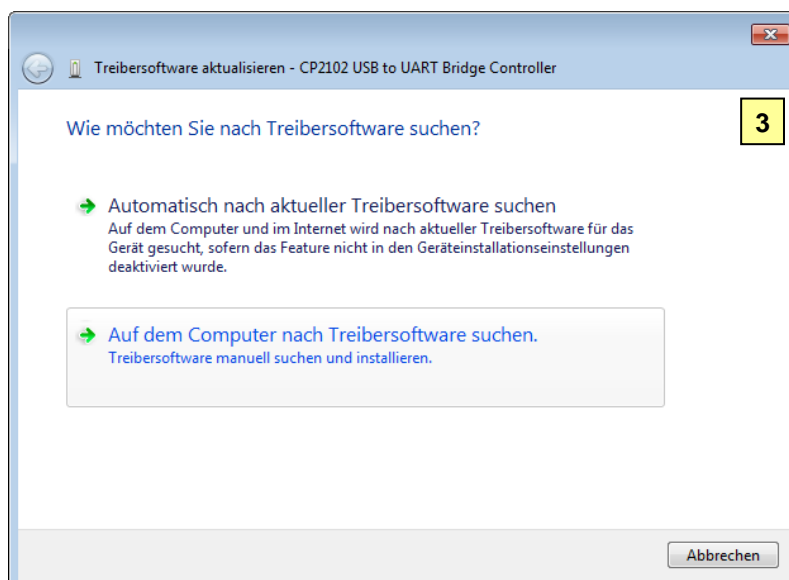
Mjölner an eine freie USB Schnittstelle anschliessen.

CD-ROM mit USB Treiber einlegen.

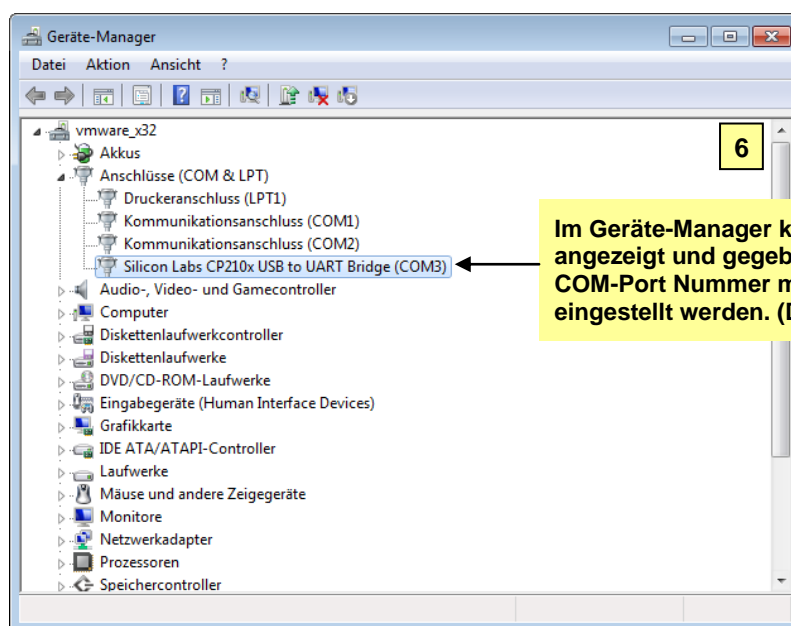
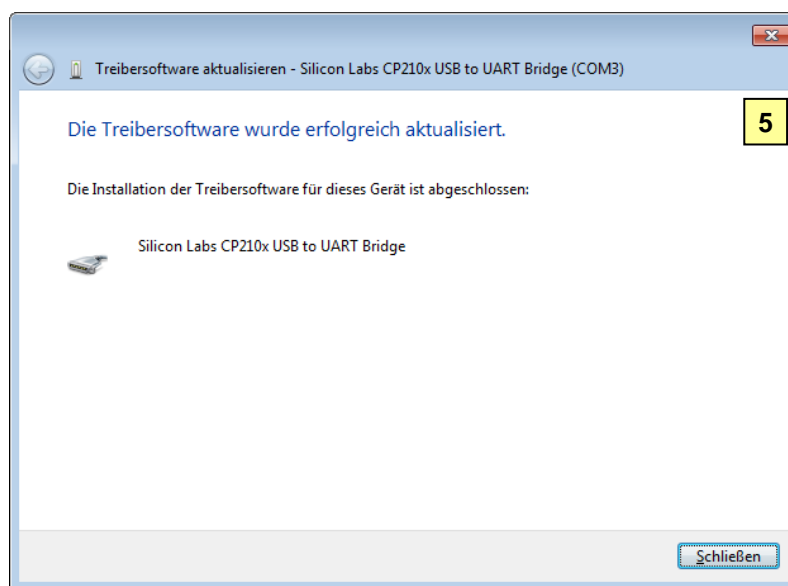
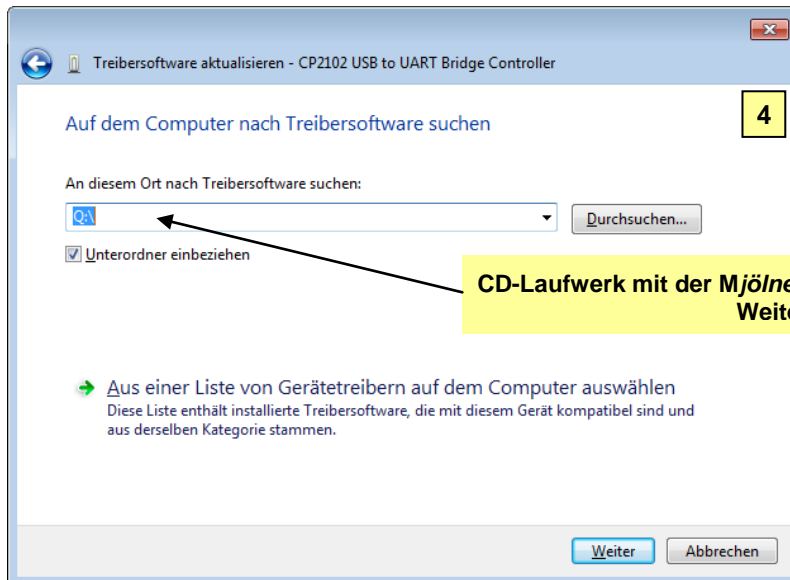
Rechtsklick auf den Anschluss



"Treibersoftware aktualisieren" auswählen



„Auf dem Computer nach Treibersoftware suchen“ auswählen



### System requirements

PC with Intel or AMD Processor, Windows XP/Vista/7/8/8.1, unused USB Port

### General references

- Close all open programs, before beginning the installation.
- For installation under Windows XP/Vista/7/8/8.1, administrator rights are necessary.

### Software installation for MJÖLNER Win

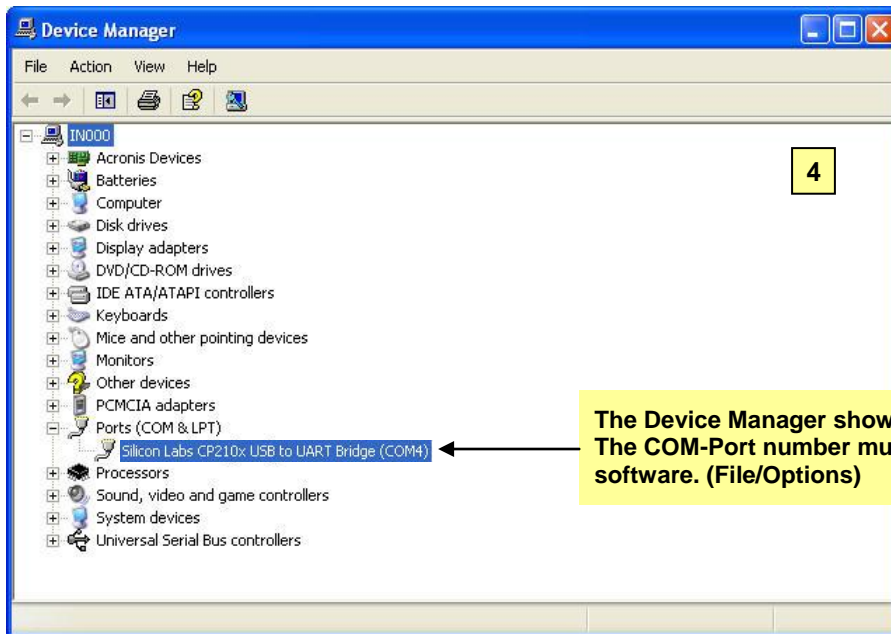
[PC with Windows XP]

The image displays three sequential screenshots of the Windows 'Found New Hardware Wizard' for Windows XP, illustrating the steps to install the MJÖLNER USB driver.

**Screenshot 1: Welcome to the Found New Hardware Wizard**  
This screen shows the initial welcome message. A yellow box with the number '1' is in the top right corner. To the right of the window, two yellow boxes provide instructions: 'Plug "Mjölner" in an unused USB Port.' and 'Insert the CD-ROM with the USB driver.' Below the window, a yellow speech bubble contains the text: 'Choose "No, not this time" Next >'. The wizard asks if Windows can connect to Windows Update to search for software, with three radio button options: 'Yes, this time only', 'Yes, now and every time I connect a device', and 'No, not this time' (which is selected).

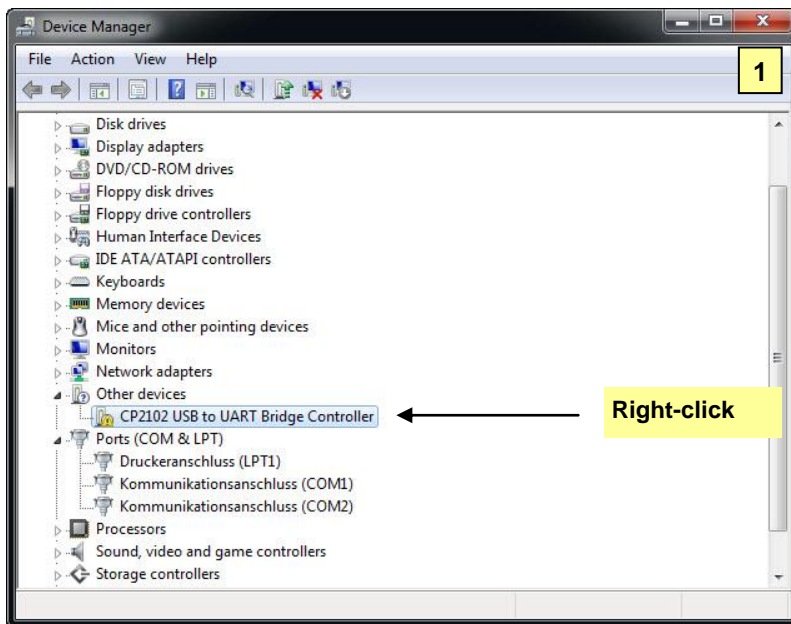
**Screenshot 2: Found New Hardware Wizard**  
This screen shows the wizard identifying the hardware. A yellow box with the number '2' is in the top right corner. To the right, a yellow speech bubble contains the text: 'Choose "Install the software automatically" Next >'. The wizard identifies the hardware as 'CP2102 USB to UART Bridge Controller'. It prompts the user to insert an installation CD or floppy disk if available. Below, it asks 'What do you want the wizard to do?' with two radio button options: 'Install the software automatically (Recommended)' (which is selected) and 'Install from a list or specific location (Advanced)'.

**Screenshot 3: Completing the Found New Hardware Wizard**  
This screen shows the completion of the installation. A yellow box with the number '3' is in the top right corner. To the right, a yellow speech bubble contains the text: 'Finish'. The wizard confirms that it has finished installing the software for the 'Silicon Labs CP210x USB to UART Bridge'. At the bottom, it says 'Click Finish to close the wizard.' and provides buttons for '< Back', 'Finish', and 'Cancel'.



The Device Manager shows the new installed COM-Port. The COM-Port number must be set in the Mjölner Win software. (File/Options)





Plug "Mjölner" in an unused USB Port.

Insert the CD-ROM with the USB driver.

