

## TM1710/20/40/50/60 / TM1800 - CABA Local Installation

### IMPORTANT NOTICE

This instruction is valid only for installing versions R07C and higher on units with the following operating systems:

- Windows 10
- Windows POS Ready
- Windows XP Professional

Windows 2000 and Windows XP Embedded are no longer supported operating systems. Last release supporting Windows 2000 and Windows XP Embedded is R06D.

### TM1710/20 NOTICE

It is not necessary to upgrade CABA Local in screenless units (TM1710/20) unless explicitly stipulated.

In case upgrade need to be done it is necessary to unscrew the small lid in the bottom plate and connect an external DVI or VGA screen. It is also recommended to connect a mouse and an external keyboard.

### Before you start, find out which operating system the unit is running on

There are different procedures depending on which operating system the TM1700/TM1800 is running on. Follow the steps below to find out.

Start the unit

1. If the display shows "Windows 2000 Professional" during start up, then the latest compatible CABA Local version is **R06D**. Proceed to section "**Windows 2000 and Windows XP Embedded operating systems**" below
2. In all other cases, wait until start up process is completed and then press Ctrl+Alt+Del
  - a. If a blue screen with a menu saying "Lock", "Switch user", ... appears, then proceed to section "**Windows 10 operating system**" in this document
  - b. If a window appears saying "Windows Security" at the top line and below this "Windows XP Embedded", then the latest compatible CABA Local version is **R06D**. Proceed to section "**Windows 2000 and Windows XP Embedded operating systems**" below
  - c. If a window appears saying "Windows Task Manager" at the top line, then proceed to section "**Windows XP Professional and Windows POS Ready operating systems**" in this document

### Windows 2000 and Windows XP Embedded operating systems

1. Copy the CABA Local installation file "TM1800 SW 2712\_253 R06D.msi" to the root folder of a USB memory stick. Make sure there is only one installation file in the root folder.
2. Make backup of all test data according to User's Manual

3. Insert the USB memory in the unit and wait a while to allow the system to install drivers (if needed)
4. Shut down the unit and start it again
5. The installation procedure will start automatically after Windows has booted up
6. Once installation is finished click 'Yes' on the prompt to restart
7. Confirm that the new version was installed in the System settings -> Versions menu in CABA Local
8. The upgrade is now completed

## Windows 10 operating system

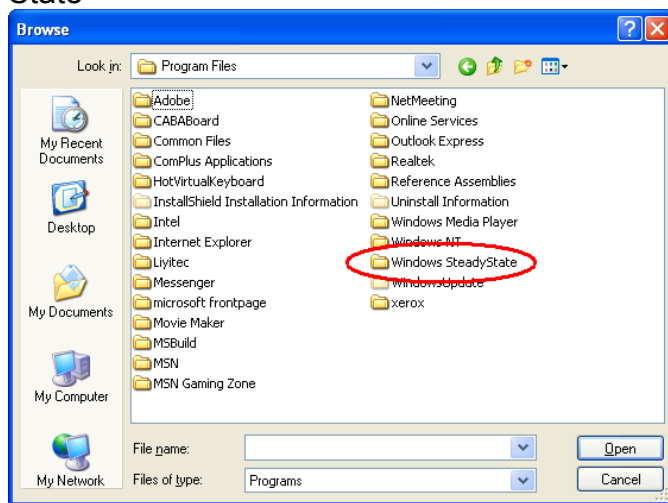
1. Copy the CABA Local installation file "TM1800 SW #####\_### R###?.exe" to the root folder of a USB memory stick. Make sure there is only one installation file on the USB memory.
2. Make backup of all test data according to User's Manual (not for TM1710/20)
3. **IMPORTANT: Deactivate the Hard disc protection temporarily during upgrade**
  - a. Press the buttons Ctrl + Alt + Del and click Task manager
  - b. In the new window (Task manager) click the menu File -> Run new task
  - c. In the new window (Create new task) type "cmd" in the textbox and click "OK"
  - d. In the Command window type in "uwfmgr filter disable" and press Enter
  - e. The screen prompts "Unified Write Filter will be disabled after system restart."
  - f. Restart the unit
  - g. Wait until the unit is completely restarted
4. Insert the USB memory in the unit and wait a while to allow the system to install drivers (if needed)
5. Shut down the unit and start it again
6. A message box saying "An installation program has been found on connected USB memory" appears. Click 'OK' to start the installation
7. CABA Local will start automatically once the installation is finished
8. Confirm that the new version was installed in the System settings -> Versions menu in CABA Local
9. Remove the USB memory
10. **IMPORTANT: Activate the Hard disc protection again after completed upgrade**
  - a. Press the buttons Ctrl + Alt + Del and click Task manager
  - b. In the new window (Task manager) click the menu File -> Run new task
  - c. In the new window (Create new task) type "cmd" in the textbox and click "OK"
  - d. In the Command window type in "uwfmgr filter enable" and press Enter
  - e. The screen prompts "Unified Write Filter will be enabled after system restart."
  - f. Restart the unit
11. The upgrade is now completed

## Windows XP Professional and Windows POS Ready operating systems

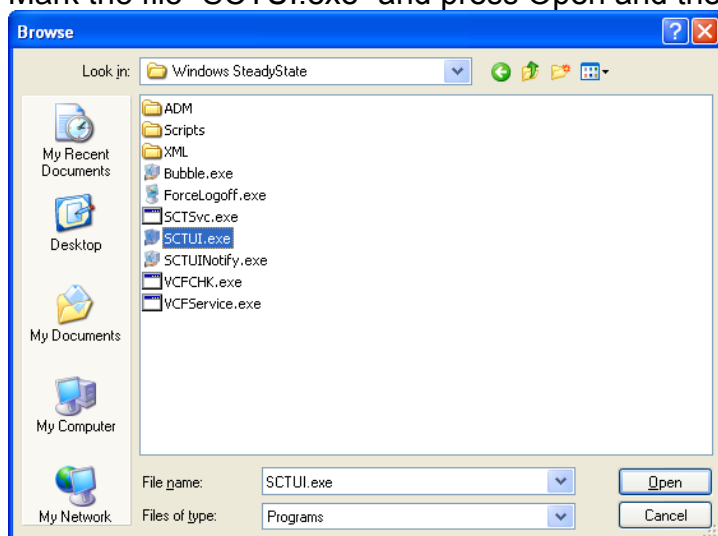
1. Check the current version of CABA Local in System settings -> Versions menu. (**Only for TM1710/20:** CABA Local must be started manually by double-clicking on AmzServer.exe located in the D:\HMI folder)
  - a. If version is equal to or lower than R06D proceed to section "**Version ≤ R06D**"
  - b. If version is higher than R06D proceed to section "**Version > R06D**"

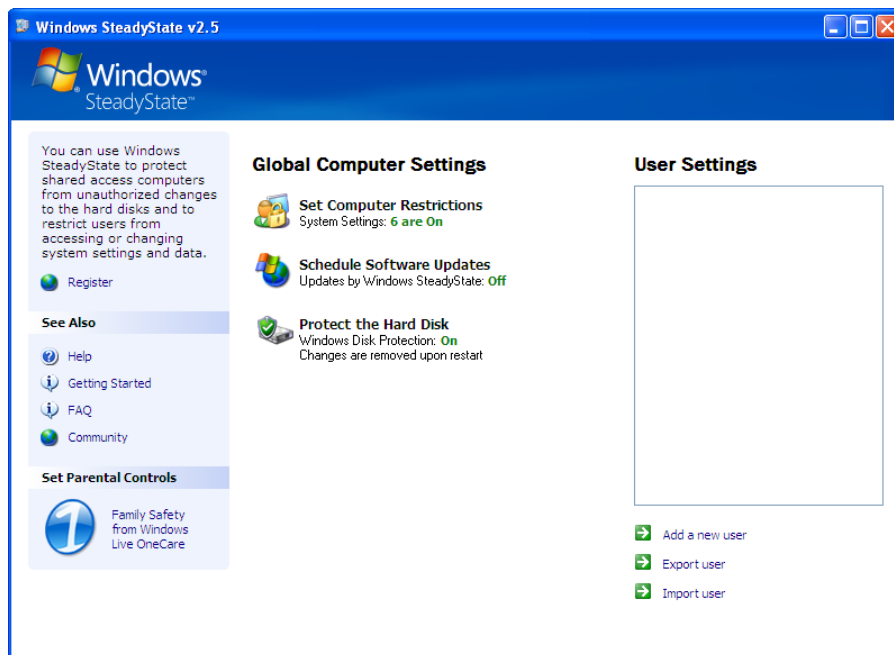
## Version ≤ R06D

1. Copy the CABA Local installation file “TM1800 SW #####\_### R##?.exe” to the root folder of a USB memory stick
2. Make backup of all test data according to User’s Manual (not for TM1710/20)
3. **IMPORTANT: Find out if “Windows SteadyState” is installed and activated on your instrument:**
  - a. Press Ctrl+Alt+Del to start the Task manager and select the Applications tab
  - b. Press New Task and then the Browse button
  - c. Browse to C:\Program Files and check if there is a folder named “Windows Steady State”

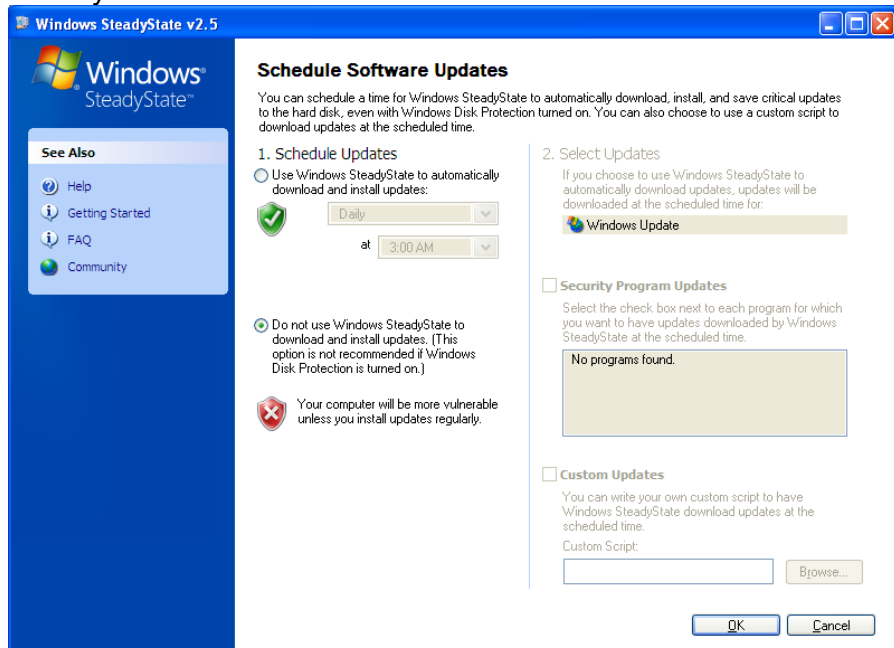


- d. If not existing: Go to step 5 below
  - e. If existing: Continue with step 4 below
4. **IMPORTANT: Deactivate Windows Steady State temporarily during upgrade**
    - a. Open the folder “Windows Steady State”
    - b. Mark the file “SCTUI.exe” and press Open and then OK in the next dialogue

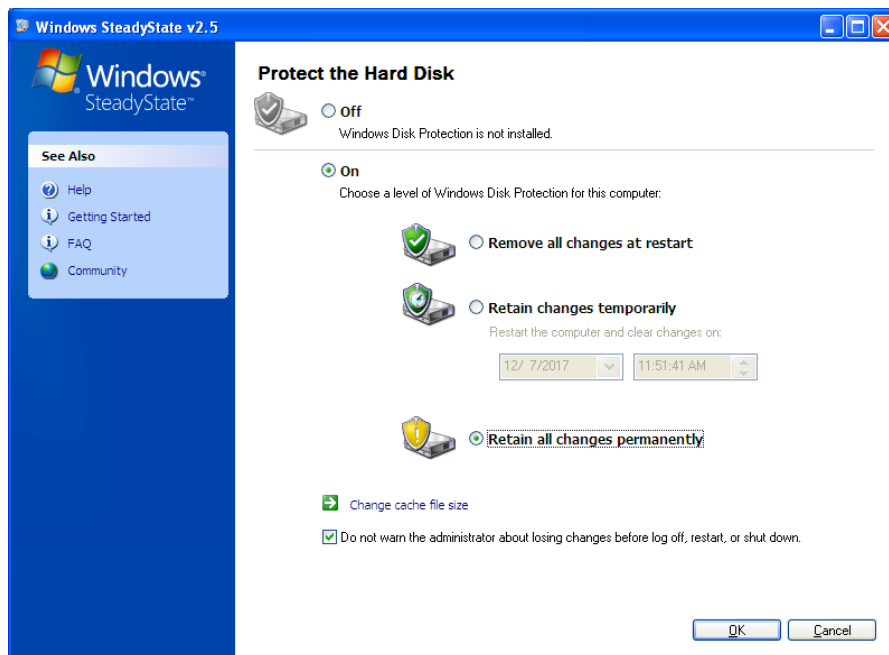




- c. Select “Schedule Software Updates” and make sure the option “Do not use Windows Steady State to download and install...” is selected and then Press OK button



- d. Click “Protect the Hard Disk” and then select the option “Retain all changes permanently”

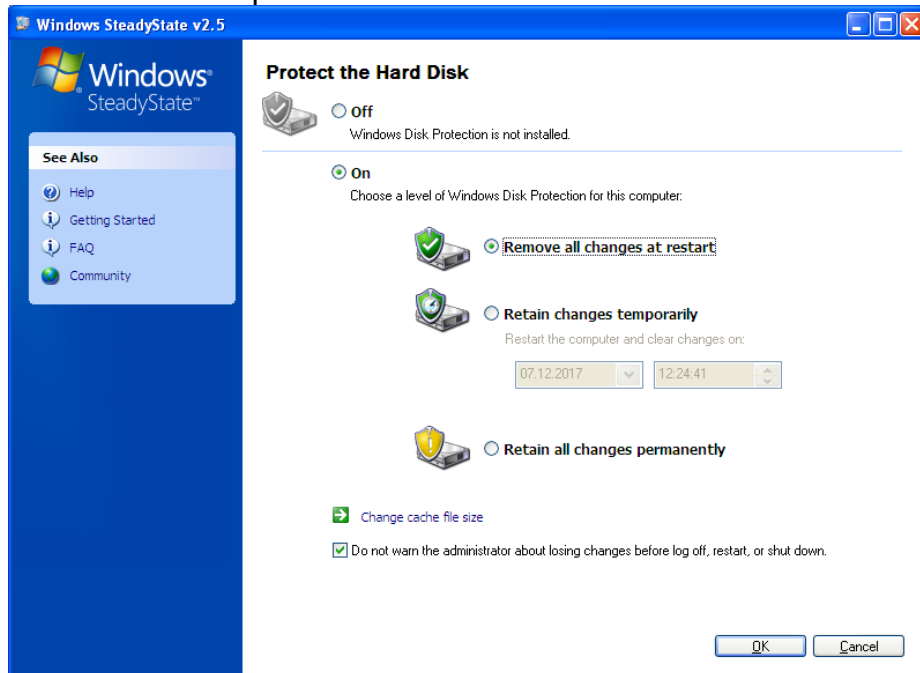


- e. Also make sure that the “Do not warn the administrator...” check box at the bottom is checked and then press the OK button
- f. Close the Windows Steady State user interface by clicking on the X in upper right corner
- g. Close the Task manager

## 5. Installation phase

- a. Insert the USB memory in the unit
- b. Press Ctrl+Alt+Del to start the ‘Task manager’
- c. Right-click on the Windows ‘Start’ menu and select ‘Explore’
- d. Copy the installation file on the USB memory drive to the root of D: drive
- e. Double-click on the installation file in the root of D:
- f. The installation procedure starts
- g. A command window will be visible while the old version is uninstalled, and when finished the unit will restart automatically
- h. When the unit has started (desktop is visible), right-click on the Windows ‘Start’ menu and select ‘Explore’
- i. Double-click on the file “TM1800 SW #####\_### R##?.exe” located in the root folder of the drive ‘DATA (D:)’
- j. A command window opens, then an installation window with progress bar opens, and finally another command window opens. When the last command window has closed the installation is ready
- k. Remove the USB memory from the unit
- l. Restart the unit by selecting ‘Turn Off Computer’ and ‘Restart’ from the Windows ‘Start’ menu
- m. Confirm that the new version was installed in the System settings -> Versions menu in CABA Local
- n. If Windows Steady State is installed, proceed with step 6 below
- o. If windows Steady State is **not** installed, the upgrade is now completed. (Step 6 shall be ignored in this case)

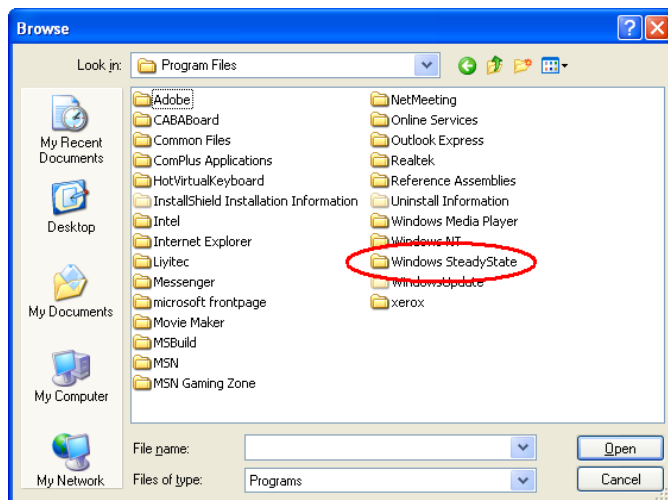
6. **IMPORTANT:** Activate Windows Steady State again after completed upgrade
  - a. Press Ctrl+Alt+Del to start the task manager and select the Applications tab
  - b. Press the New Task button. The path to the file “SCTUI.exe” should already be present in the “Create New Task dialogue. Just click OK button
  - c. Click “Protect the Hard Disk” and then select the option “Remove all changes at restart” and then press the OK button



- d. Close the Windows Steady State user interface by clicking on the X in upper right corner
- e. Close the Task manager
- f. Now the system is upgraded and protected

## Version > R06D

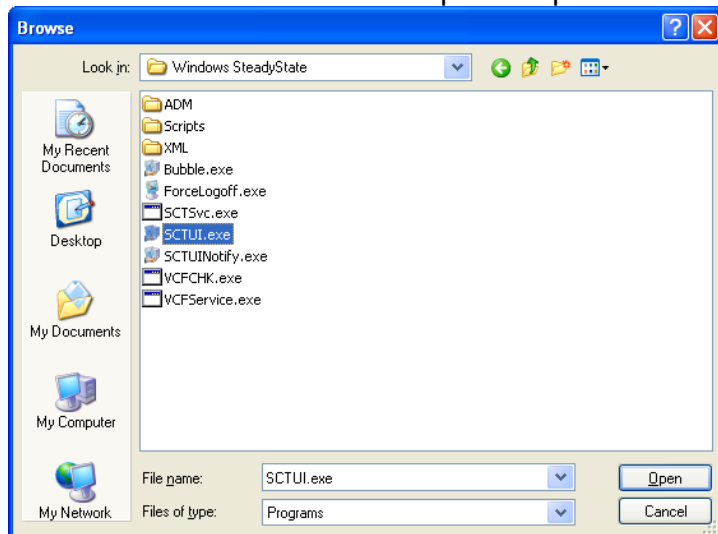
1. Copy the CABA Local installation file “TM1800 SW #####\_### R##?.exe” to the root folder of a USB memory stick. Make sure there is only one installation file on the USB memory.
2. Make backup of all test data according to User’s Manual (not for TM1710/20)
3. **IMPORTANT:** Find out if “Windows SteadyState” is installed and activated on your instrument:
  - a. Press Ctrl+Alt+Del to start the Task manager and select the Applications tab
  - b. Press New Task and then the Browse button
  - c. Browse to C:\Program Files and check if there is a folder named “Windows Steady State”

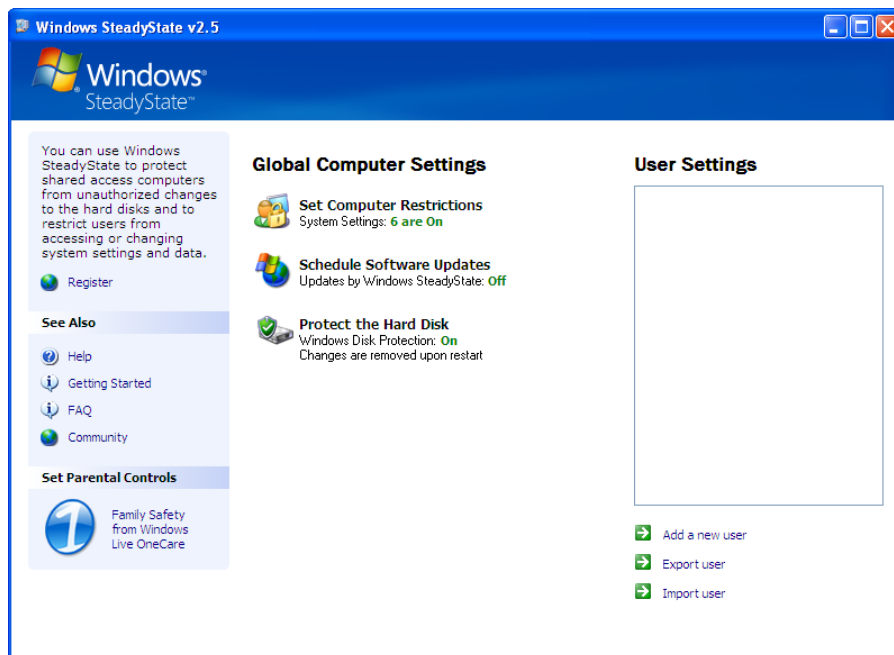


- d. If not existing: Go to step 5 below
- e. If existing: Continue with step 4 below

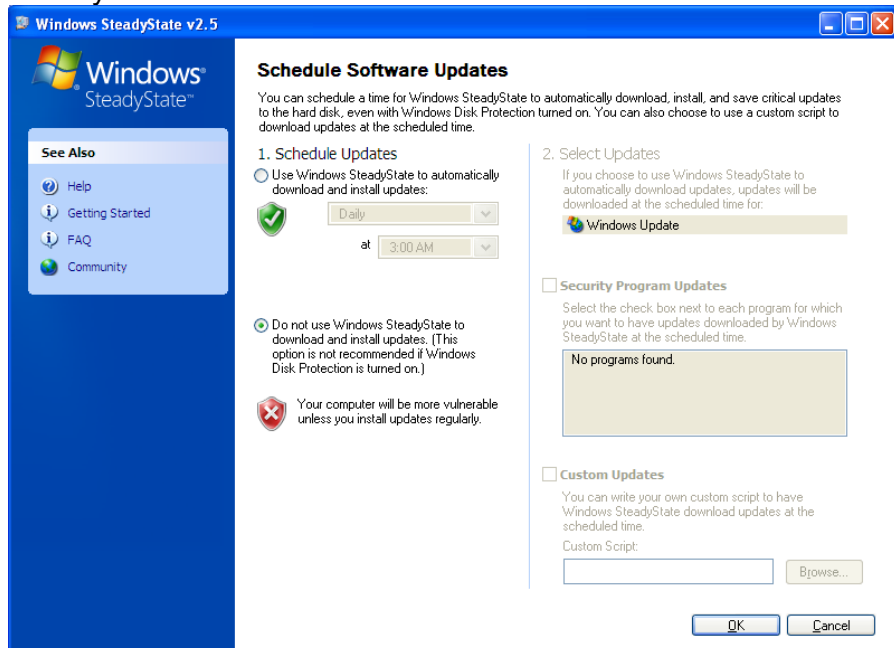
4. **IMPORTANT: Deactivate Windows Steady State temporarily during upgrade**

- a. Open the folder “Windows Steady State”
- b. Mark the file “SCTUI.exe” and press Open and then OK in the next dialogue



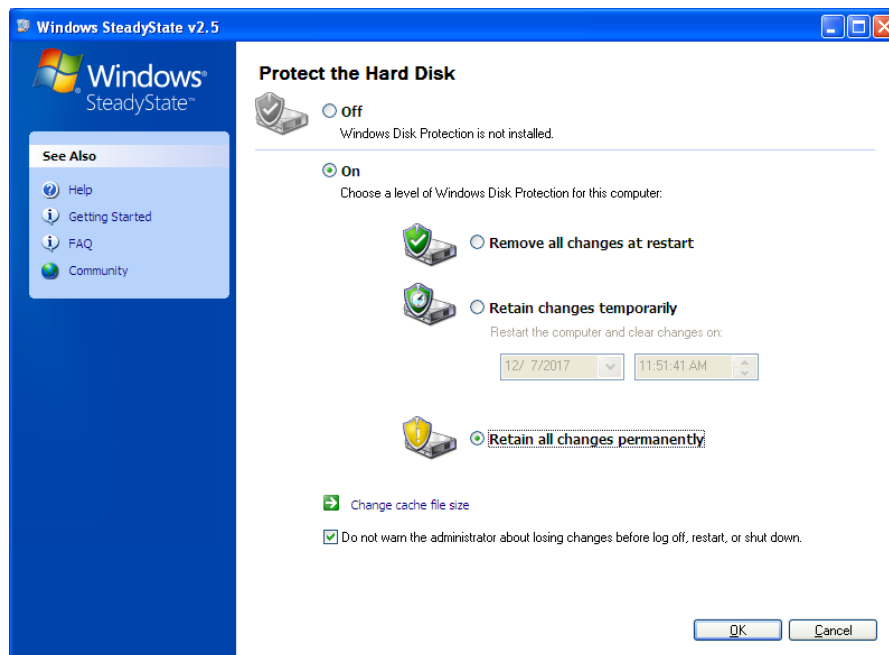


- c. Select "Schedule Software Updates" and make sure the option "Do not use Windows Steady State to download and install..." is selected and then Press OK button



- d. Click "Protect the Hard Disk" and then select the option "Retain all changes permanently"





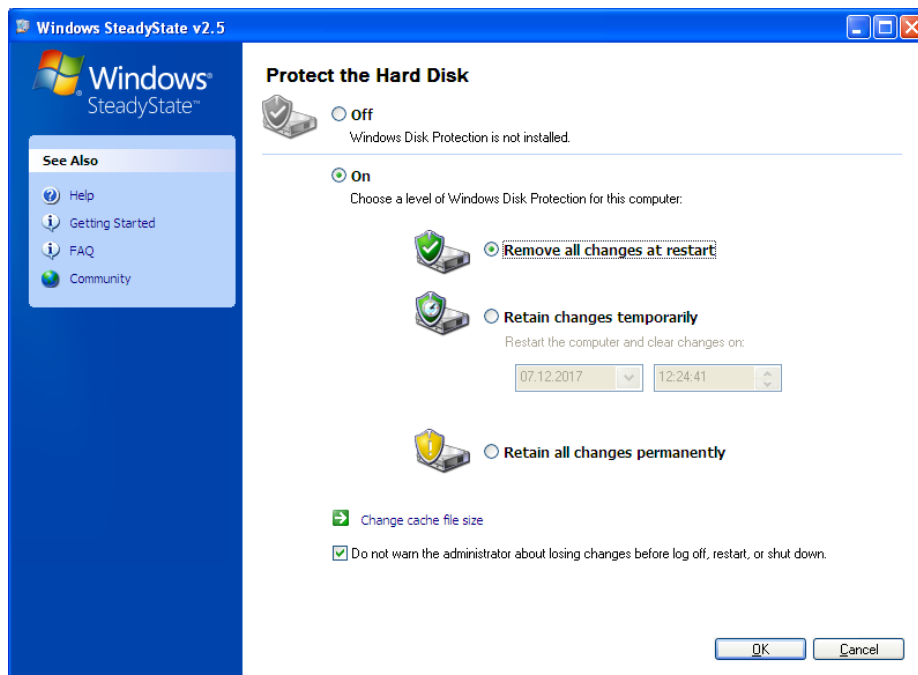
- e. Also make sure that the “Do not warn the administrator...” check box at the bottom is checked and then press the OK button
- f. Close the Windows Steady State user interface by clicking on the X in upper right corner
- g. Close the Task manager

## 5. Installation phase

- a. Insert the USB memory in the unit and wait a while to allow the system to install drivers (if needed)
- b. Shut down the unit and start it again
- c. A message box saying “An installation program has been found on connected USB memory” appears. Click ‘OK’ to start the installation
- d. CABA Local will start automatically once the installation is finished
- e. Confirm that the new version was installed in the System settings -> Versions menu in CABA Local
- f. **IMPORTANT:** If Windows Steady State is installed, **you need to restart the unit now, after removing the USB memory**, and then proceed with step 6 below
- g. If windows Steady State is **not** installed, the upgrade is now completed. (Step 6 shall be ignored in this case)

## 6. **IMPORTANT:** Activate Windows Steady State again after completed upgrade

- h. Press Ctrl+Alt+Del to start the task manager and select the Applications tab
- i. Press the New Task button. The path to the file “SCTUI.exe” should already be present in the “Create New Task dialogue. Just click OK button
- j. Click “Protect the Hard Disk” and then select the option “Remove all changes at restart” and then press the OK button



- k. Close the Windows Steady State user interface by clicking on the X in upper right corner
- l. Close the Task manager
- m. Now the system is upgraded and protected