

Megger PAT Serial over USB driver Installation

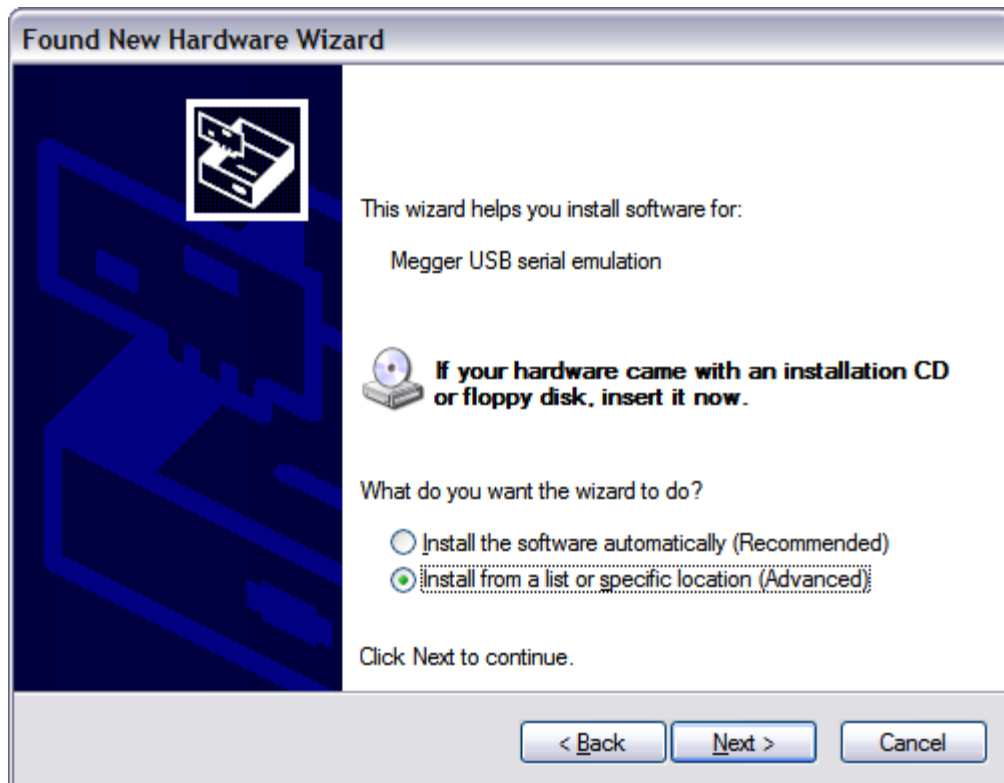
Follow the instructions to install driver for communicating with the PAT300/400 series testers.

Place the *generic_serial_usb.inf* file in computer's C:\TEMP folder.

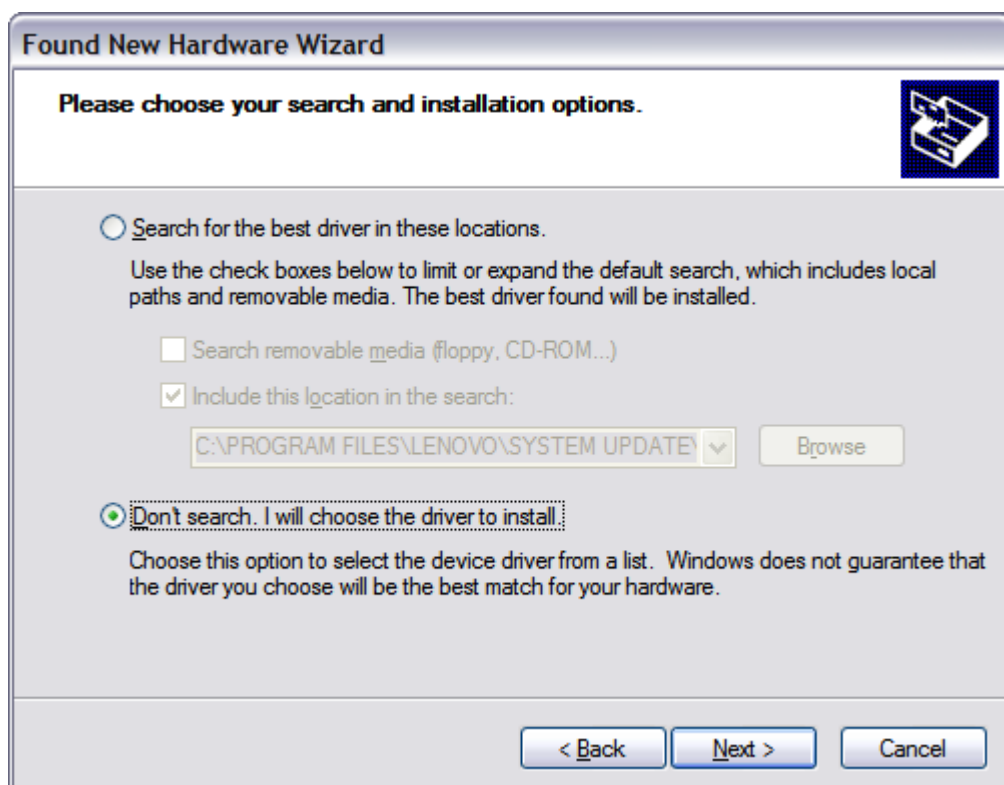
Power up the tester and connect the PC to the tester via a USB cable. For PAT400, use the top USB socket. The PC will ask the user to install driver for the new hardware it has found.



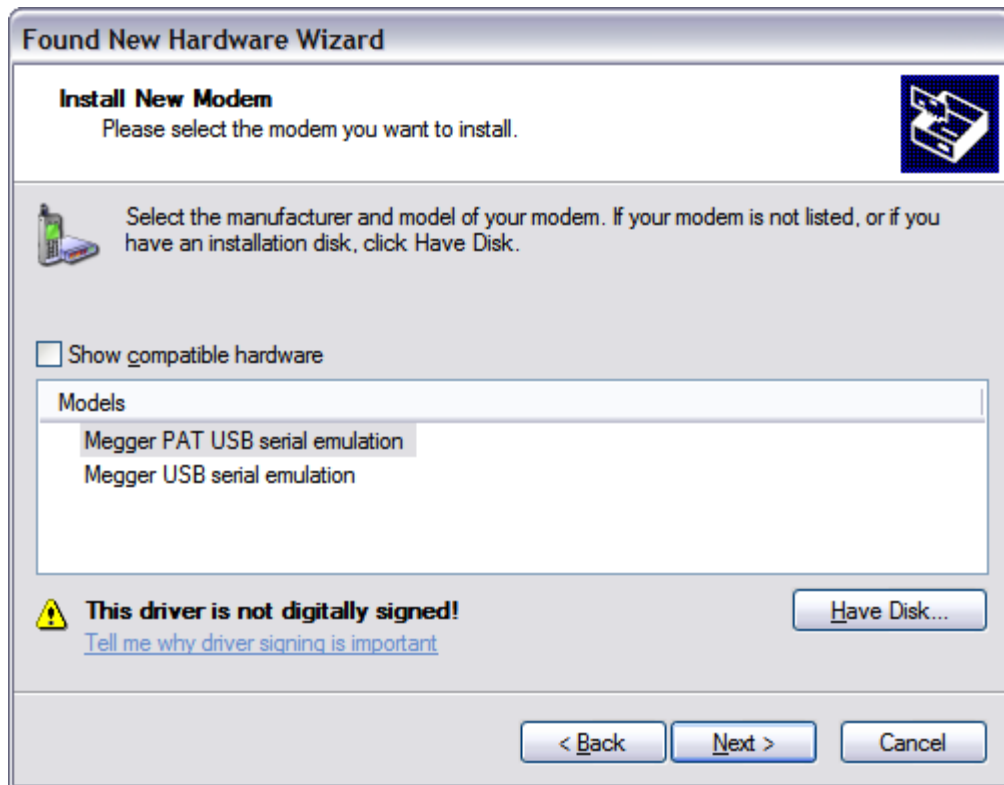
Select the 'No, not this time' option and click the Next> button.



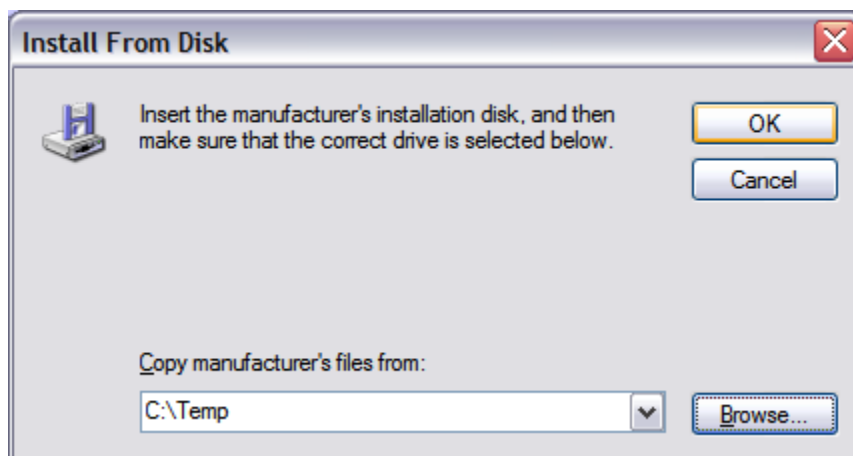
Select the 'Install from a list or specific location (Advanced)' option and click on the Next> button.



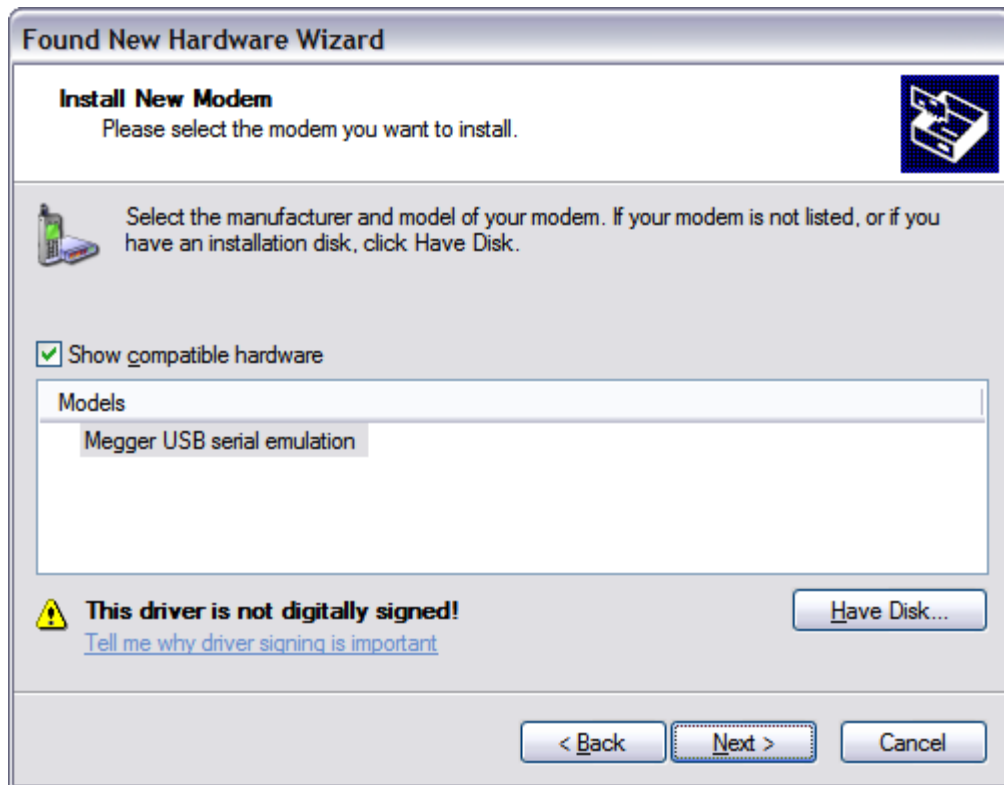
Select the 'Don't search. I will choose the driver to install.' option and click on the Next> button.



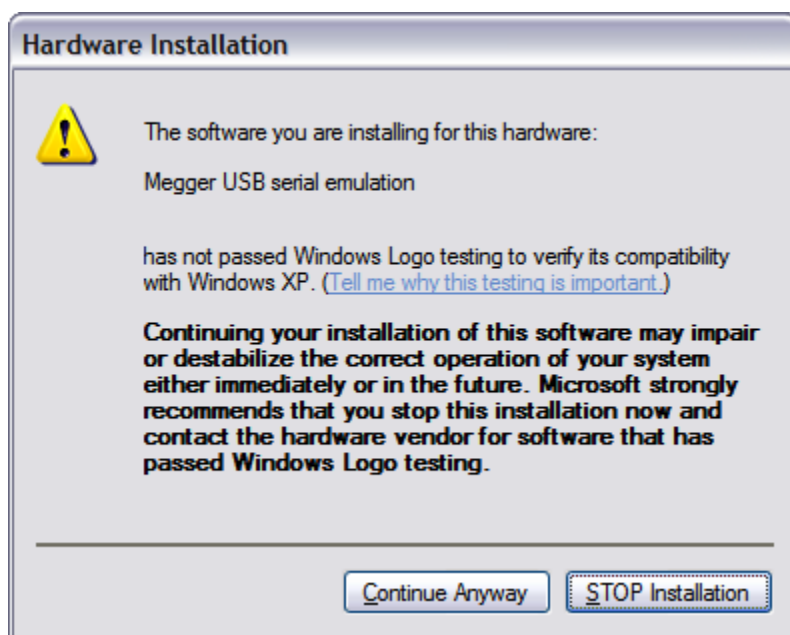
Click on the 'Have Disk...' button.



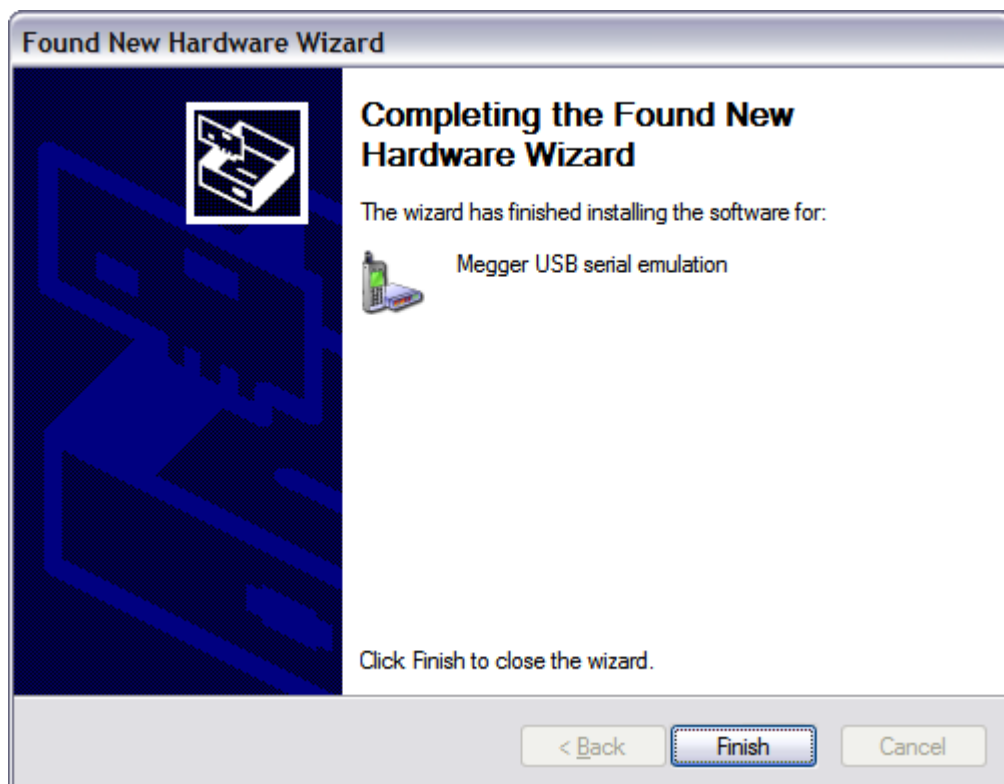
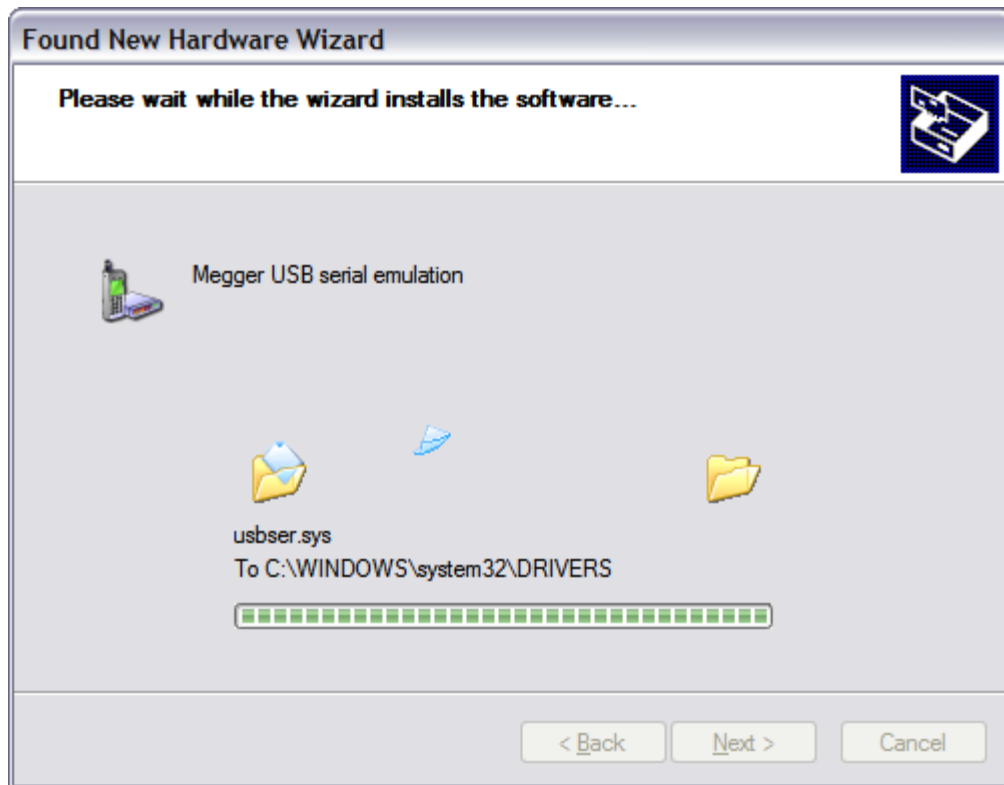
Click on the Browse button and navigate to the 'C:\Temp' folder and click OK to proceed.



Click on the Next> button.

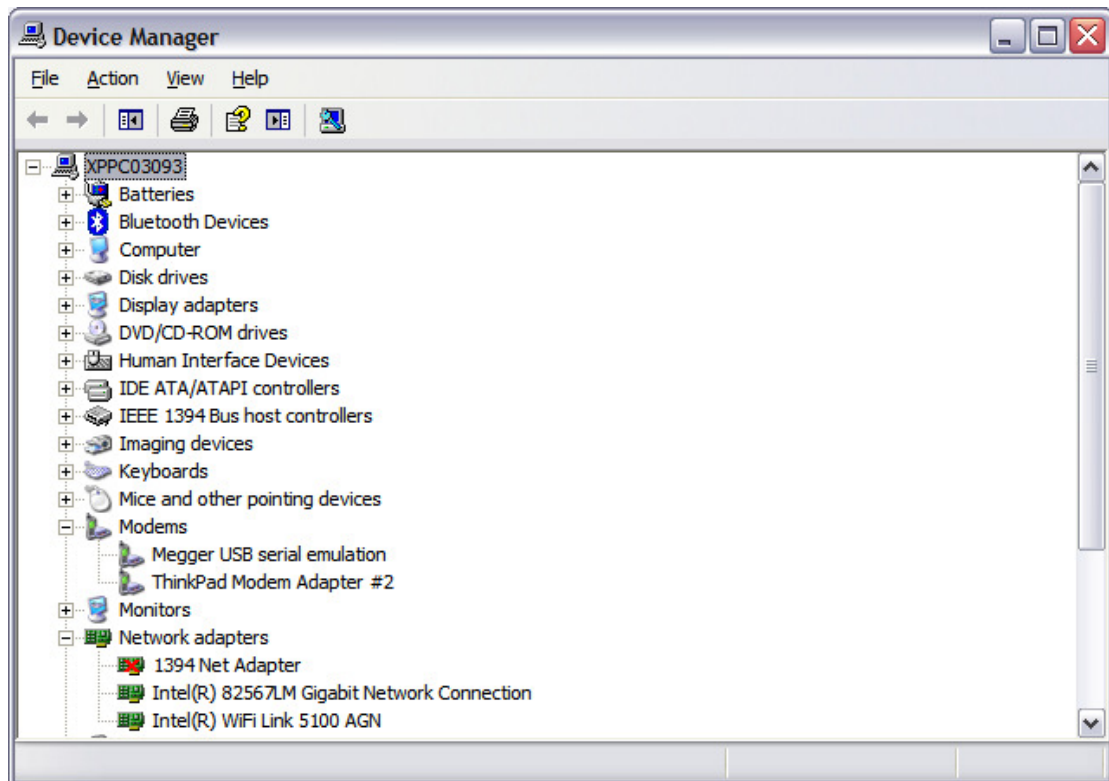


If the above window appears, click on the 'Continue Anyway' button.

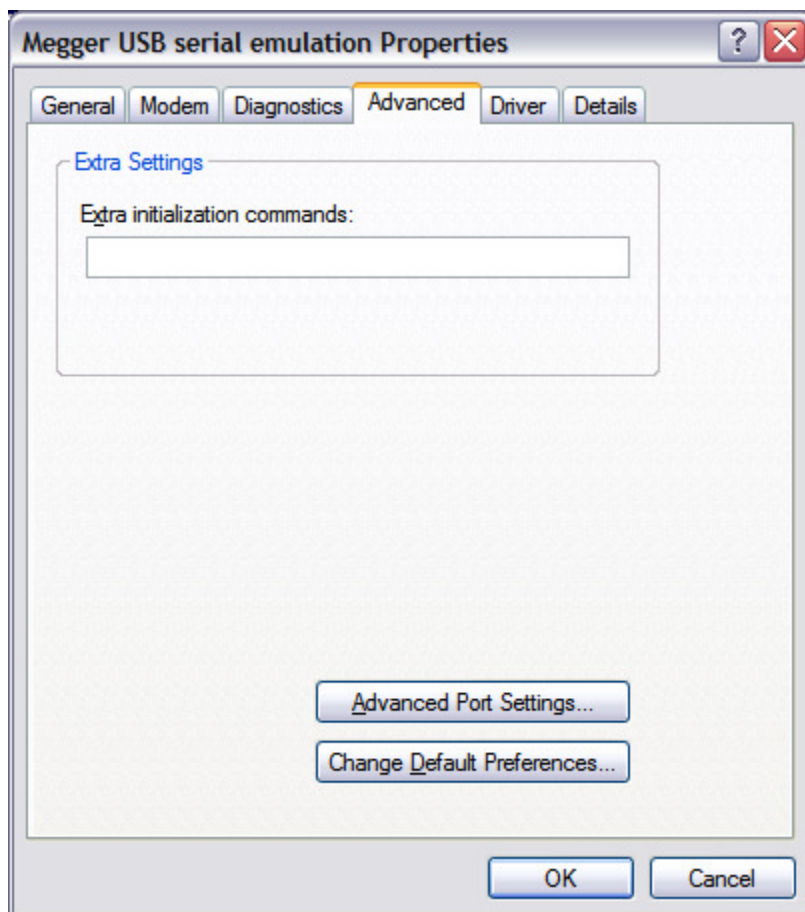


Click on the Finish button to complete the installation.

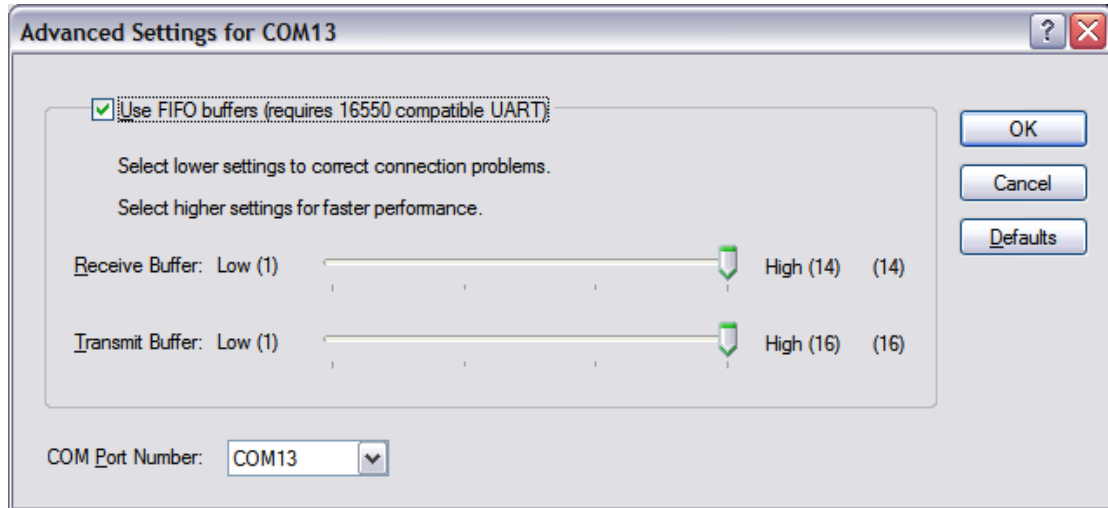
In Microsoft 2000/2003/XP/Vista environment open the command line console and type **devmgmt.msc** to launch the Device Manager applet.



You will find the 'Megger USB serial emulation' under the Modems device list.



Right click on it to open the properties popup. Go to the Advanced section and click on the 'Advanced Port Settings...' button.



The COM Port Number indicates which port has been assigned to the PAT tester.

Close all windows and you are ready to communicate with the PAT tester.